

Now you have it all!

Eppendorf LoBind Tubes and Plates

LoBind makes the Difference

When biological samples are stored or incubated in standard reaction vessels more than 90 % sample material can be lost within 24 hours due to adsorption to the plastic surface.

Eppendorf LoBind Tubes and Plates maximize sample recovery by significantly reducing sample-to-surface binding – without the use of any type of coating!

A combination of specially developed technology and ultrapure selected polypropylene ensures best recovery rates of your valuable samples.

Product features & benefits

- LoBind material guarantees maximum sample recovery for improved assay results
- Free of surface coating (e. g. silicization). Eliminates the risk of sample interference
- DNA LoBind for DNA or RNA applications in forensic analysis, microarrays, next generation sequencing
- Protein LoBind for protein, peptide, antibody or virus samples
- Available in tube and plate formats for easy up-scaling
- High stability for use in all sample preparation protocols
- PCR clean quality batch tested and certified by an independent laboratory for reliable purity

Protection from sample loss for improved assay results

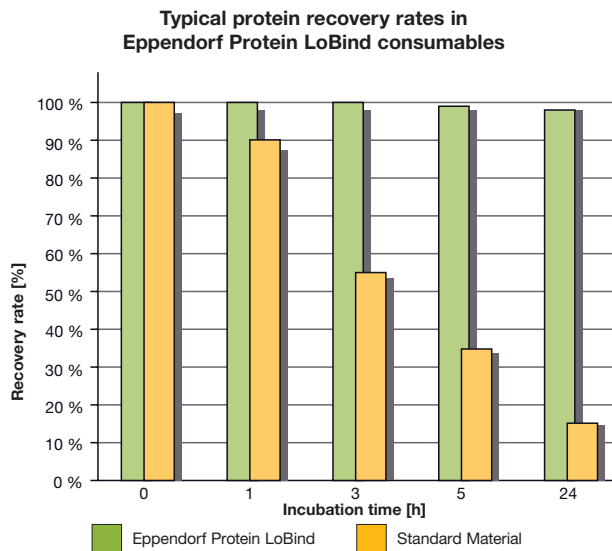


Fig. 1: Protein recovery (fluorescein-labeled BSA) in Eppendorf Protein LoBind Deepwell Plates and plates made of standard material. The Eppendorf Protein LoBind material guarantees up to 97 % sample recovery independent on incubation time. In contrast, protein sticks to standard material resulting in nearly 50 % or 90 % sample loss after 3 h or 24 h, respectively.

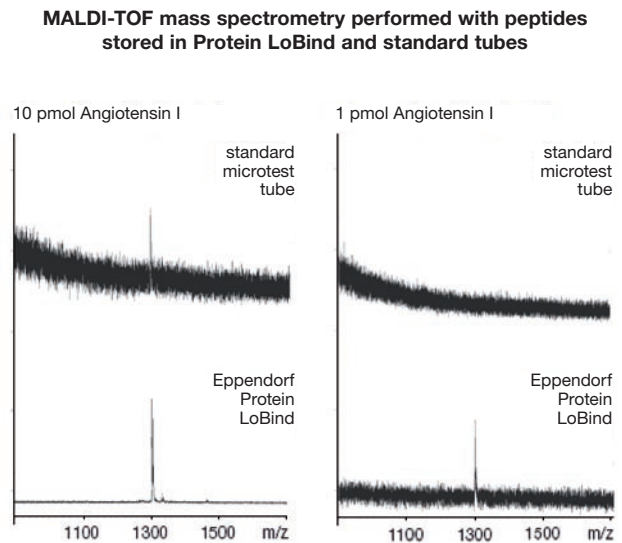


Fig. 2: The use of Eppendorf Protein LoBind Tubes yield a significantly higher signal during MALDI-TOF analysis of the peptide angiotensin I when compared to the use of standard tubes. At 1 pmol, analysis becomes impossible with standard microtest tubes. (Source: Dr. S. Seeber and Dr. Humeny, Institute of Biochemistry, University of Erlangen-Nürnberg, Germany)

Ordering information

Description	Packaging	International Order no.	North America Order no.
Eppendorf Protein LoBind consumables, PCR clean²			
Safe-Lock Tube 0.5 ml	100 tubes (2 bags of 50)	0030 108.094	022431064
Safe-Lock Tube 1.5 ml	100 tubes (2 bags of 50)	0030 108.116	022431081
Safe-Lock Tube 2.0 ml	100 tubes (2 bags of 50)	0030 108.132	022431102
Deepwell Plate ¹ 96/1000 µl	20 plates (5 bags of 4)	0030 504.208	951032905
Deepwell Plate ¹ 96/500 µl	40 plates (5 bags of 8)	0030 504.100	951032107
Deepwell Plate ¹ 384/200 µl	40 plates (5 bags of 8)	0030 524.101	951031305
Deepwell Plate ¹ 96/2000 µl	20 plates (5 bags of 4)	0030 504.305	0030504305
Microplate 384/120 µL (V-bottom)	80 plates (5 bags of 16)	0030 624.300	951040589
Eppendorf DNA LoBind consumables, PCR clean²			
Safe-Lock Tube 0.5 ml	250 tubes (5 bags of 50)	0030 108.035	022431005
Safe-Lock Tube 1.5 ml	250 tubes (5 bags of 50)	0030 108.051	022431021
Safe-Lock Tube 2.0 ml	250 tubes (5 bags of 50)	0030 108.078	022431048
Deepwell Plate ¹ 96/1000 µl	20 plates (5 bags of 4)	0030 503.201	951032808
Deepwell Plate ¹ 96/500 µl	40 plates (5 bags of 8)	0030 503.104	951032000
Deepwell Plate ¹ 384/200 µl	40 plates (5 bags of 8)	0030 523.105	951031208
Microplate 384/120 µL (V-bottom)	80 plates (5 bags of 16)	0030 623.304	951040546

¹ Plates with clear wells and white OptiTrack® border color. For more information and other border colors please contact your local Eppendorf distributor or visit www.eppendorf.com/consumables
² PCR clean quality is batch certified free of DNA, DNase, RNase and PCR inhibitors.

eppendorf
In touch with life

Your local distributor: www.eppendorf.com/worldwide

Eppendorf AG · Hamburg · Germany · Tel: +49 40 538 01-0 · Application Support E-mail: support@eppendorf.com
 Eppendorf North America, Inc. · USA · Tel: +1 516 334 7500 · Toll free phone: +1 800 645 3050 · E-mail: info@eppendorf.com