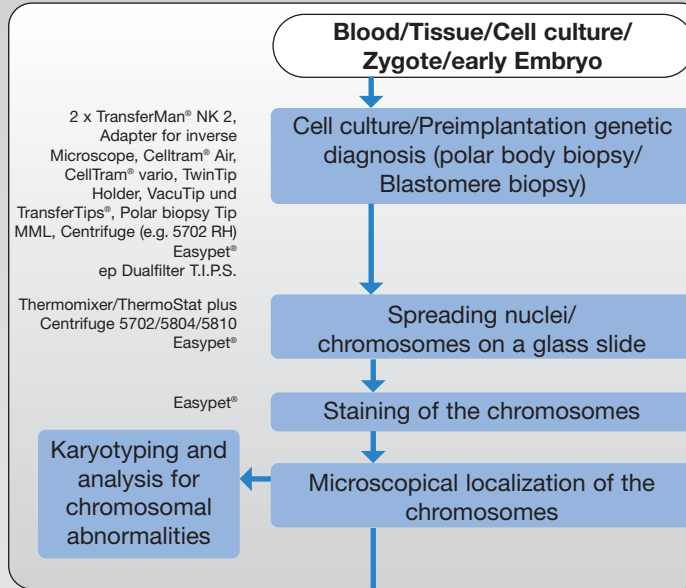


# Chromosome Analysis

## General equipment

- Pipettes
- epT.I.P.S.
- Tubes



2 x TransferMan® NK 2,  
Adapter for inverse  
Microscope, Celltram® Air,  
CellTram® vario, TwinTip  
Holder, VacuTip und  
TransferTips®, Polar biopsy Tip  
MML, Centrifuge (e.g. 5702 RH)  
Easypet®  
ep Dualfilter T.I.P.S.

Thermomixer/ThermoStat plus  
Centrifuge 5702/5804/5810  
Easypet®

Easypet®

Karyotyping and  
analysis for  
chromosomal  
abnormalities

Thermomixer/ThermoStat plus  
with thermoblock slides  
Easypet®  
Varispenser®

For molecular-cytogenetic analysis all  
methods shown are performed

Methods shown in frame are sufficient for  
cytogenetic analysis

## Probe

Thermomixer, ThermoStat plus

Centrifuge 5424/MiniSpin®

Pretreatment  
before fluorescence  
*in situ* hybridization  
(FISH)

Denaturation

Preparation of  
hybridization  
solution

Hybridization  
Thermomixer, ThermoStat plus  
with thermoblock slides  
Easypet®

Antibody  
incubation  
MiniSpin®  
Easypet®

Counterstaining  
of the  
chromosomes  
Pipettes  
epT.I.P.S.  
Tubes

Analysis of FISH-  
signals using a  
fluorescence  
microscope