

# Your Centrifuge Solution

High-Speed Floorstanding Centrifuges CR22N and CR30NX (China/APA)



## Harvesting Bundle 4 x 1.5 L (CR22N)

### Centrifuge CR22N + Rotor R9A2\*

- > Max. capacity: 4 x 1,500 mL
- > Max. speed: 15,100 x g / 8,500 rpm
- + 1.5 L PP bottles

Order no.:  
5721 261 411

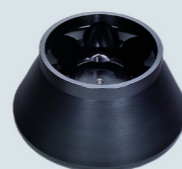
### Harvesting Kit 6 x 0.5 L (CR22N)

Harvesting/ pelleting of biomass in bioprocess applications

#### Rotor R10A3\*

- + Himac 0.5L PA bottles
- > Max. capacity: 6 x 500 mL
- > Max. speed: 18,800 x g / 10,000 rpm

Order no.:  
5721 221 013



### Low-Speed Pelleting Kit 15/50 mL conical (CR22N)

Differential pelleting applications (cells, bacteria), density gradient, protein concentration in columns

#### Rotor R4SS

- + Adaptor 15/50 TC
- + 15/50 TC tubes
- > Max. capacity: 40 x 14 mL
- > Max. speed: 2,900 x g / 4,000 rpm

Order no.:  
5721 264 002



### High-Speed Pelleting Kit 8 x 50 mL tube (CR22N)

Differential pelleting applications (cells, subcellular organelles, larger viruses). DNA/RNA extraction and subsequent steps

#### Rotor R20A2\*

- + Himac 50PA tube
- + M-PP-Lid
- > Max. capacity: 8 x 50 mL
- > Max. speed: 48,000 x g / 20,000 rpm

Order no.:  
5721 302 106



### High-Speed Pelleting Kit 10 x 15/50 mL conical (CR22N)

Differential pelleting applications (cells, subcellular organelles, nucleic acid precipitation, concentration, purification, phase separation)

#### Rotor R15A\*

- + Himac 15/50 mL TC tubes
- > Max. capacity: 10 x 50 mL
- > Max. speed: 32,300 x g / 15,000 rpm

Order no.:  
5721 221 007



## Harvesting Bundle 4 x 1.5 L (CR30NX)

### Centrifuge CR30NX + Rotor R9A2\*

- > Max. capacity: 4 x 1,500 mL
- > Max. speed: 15,100 x g / 8,500 rpm
- + 1.5 L PP bottles

Order no.:  
5721 351 511

### Continuous Flow Kit (CR30NX)

Harvesting higher volumes (>10 L) of cell or microbial cultures

#### Rotor R10C2\*

- > Max. capacity: Continuous flow rotor
- > Max. speed: 14,290 x g / 10,000 rpm

Order no.:  
5721 352 601



### Harvesting Kit 6 x 1 L (CR30NX)

Harvesting/ pelleting of biomass (>10 L) in bioprocess applications

#### Rotor R7A\*

- + Himac 1.0L PP bottles
- > Max. capacity: 6 x 1,000 mL
- > Max. speed: 11,100 x g / 7,000 rpm

Order no.:  
5721 352 100



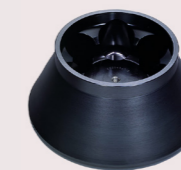
### Harvesting Kit 6 x 0.5 L (CR30NX)

Harvesting/ pelleting of biomass in bioprocess applications

#### Rotor R10A3\*

- + Himac 0.5L PA bottles
- > Max. capacity: 6 x 500 mL
- > Max. speed: 18,800 x g / 10,000 rpm

Order no.:  
5721 302 112



### Low-Speed Pelleting Kit 15/50 mL conical (CR30NX)

Differential pelleting applications (cells, bacteria), density gradient, protein concentration in columns

#### Rotor R4SS

- + Adaptor 15/50 TC + 15/50 TC tubes
- > Max. capacity: 40 x 14 mL
- > Max. speed: 2,900 x g / 4,000 rpm

Order no.:  
5721 352 402



### High-Speed Pelleting Kit 8 x 50 mL tube (CR30NX)

Differential pelleting applications (cells, subcellular organelles, larger viruses). DNA/RNA extraction and subsequent steps

#### Rotor R20A2\*

- + Himac 50PA tube + M-PP-Lid
- > Max. capacity: 8 x 50 mL
- > Max. speed: 48,000 x g / 20,000 rpm

Order no.:  
5721 221 005



### High-Speed Pelleting Kit 8 x 50 mL conical (CR30NX)

Differential pelleting applications (cells, subcellular organelles, nucleic acid precipitation, concentration, purification, phase separation)

#### Rotor R19A2\*

- + Himac 50 mL TC tubes
- > Max. capacity: 8 x 50 mL
- > Max. speed: 50,000 x g / 19,000 rpm

Order no.:  
5721 302 107



### Super-Speed Pelleting Kit 8 x 50 mL tube (CR30NX)

Pelleting protein, viral particles separation, exosome, organelles separation. Requiring high speeds up to 110,000 x g with fixed-angle rotors

#### Rotor R30AT\*

- + Himac 50 PP bottles
- > Max. capacity: 8 x 50 mL
- > Max. speed: 110,000 x g / 30,000 rpm

Order no.:  
5721 302 101



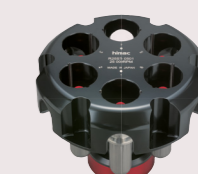
### Super-Speed Pelleting Kit 6 x 40 mL tube (CR30NX)

Pelleting protein, viral particles separation, exosome, organelles separation. Requiring high speeds up to 110,000 x g with swing-bucket rotors

#### Rotor R25ST

- + Himac 40PA tubes
- > Max. capacity: 6 x 40 mL
- > Max. speed: 110,000 x g / 25,000 rpm

Order no.:  
5721 302 400



\*Autoclavable