

Improve test sensitivity by minimizing sample loss with the LoBind® Tubes

Eppendorf LoBind® Tubes maximize sample recovery by significantly reducing sample binding to the surface. A combination of special manufacturing technologies and selected polypropylene batches ensures maximum recovery of nucleic acids or protein without surface coating to eliminate the risk of sample contamination.

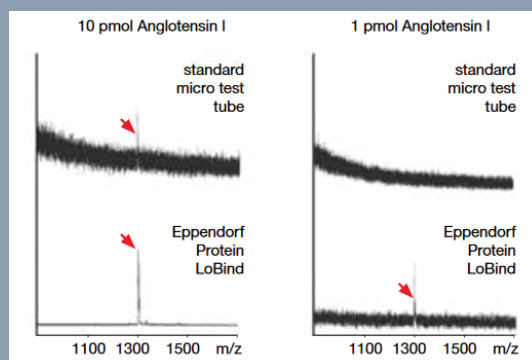


Protein LoBind® Tube

Suitable for all protein related applications or for storage of samples that contains viruses that have an outer protein coat.



All LoBind® Tubes by Eppendorf are free of surface coating (e.g. silicone) to minimize the risk of sample interference.



The use of Eppendorf Protein LoBind® Tubes will yield a significantly higher signal during MALDI-TOF analysis of the peptide angiotensin than the use of tubes made from standard materials. When the amount of incubated peptide is reduced to 1 pmol, analysis becomes impossible if standard tubes are used.

Eppendorf Tubes - Technical Data – Application Notes for LoBind® Tubes



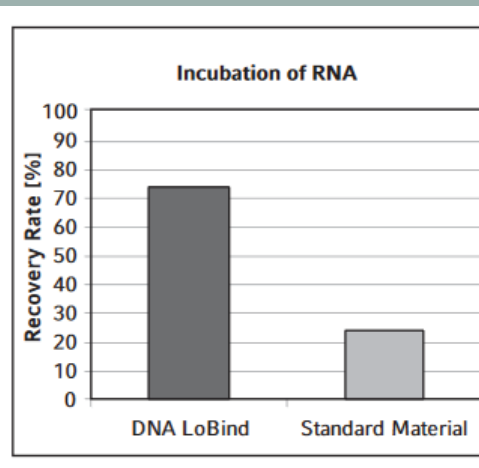
DNA LoBind® Tube

Suitable for sample processing like DNA/RNA extraction from samples that are limited in quantity and storage after the extraction process.



Did you know?

Any heating step or processing of samples in high salt conditions can increase sample loss to the wall of the tube.



A 100 ng/mL rRNA solution in the TE buffer was incubated at room temperature in standard material tubes and DNA LoBind® Tubes. After 24 hours, the RNA solutions were brought from the tubes onto a measuring plate and colored with the reagent RiboGreen. The recovery was determined from the measuring results

Ordering Information

Eppendorf Safe-Lock Tubes

| | |
|---|--------------|
| Protein LoBind® Tubes, 0.5 mL, 100 tubes, (2 bags x 50 tubes) | 0030 108.094 |
| DNA LoBind® Tubes, 0.5 mL, 250 tubes, (5 bags x 50 tubes) | 0030 108.035 |
| Protein LoBind® Tubes, 1.5 mL, 100 tubes, (2 bags x 50 tubes) | 0030 108.116 |
| DNA LoBind® Tubes, 1.5 mL, 250 tubes, (5 bags x 50 tubes) | 0030 108.051 |
| Protein LoBind® Tubes, 2.0 mL, 100 tubes, (2 bags x 50 tubes) | 0030 108.132 |
| DNA LoBind® Tubes, 2.0 mL, 250 tubes, (5 bags x 50 tubes) | 0030 108.078 |

Eppendorf Tubes® 5.0 mL with snap cap

| | |
|--|--------------|
| Protein LoBind, 100 tubes, (2 bags x 50 tubes) | 0030 108 302 |
| DNA LoBind, 200 tubes, (4 bags x 50 tubes) | 0030 108 310 |

Eppendorf Tubes® 5.0 mL with screw cap

| | |
|--|--------------|
| Protein LoBind, 200 tubes, (4 bags x 50 tubes) | 0030 122 356 |
| DNA LoBind, 200 tubes, (4 bags x 50 tubes) | 0030 122 348 |

Eppendorf Conical Tube

| | |
|--|--------------|
| Conical Tubes, 15 mL, Protein LoBind, 200 tubes, (4 bags x 50 tubes) | 0030 122 216 |
| Conical Tubes, 15 mL, DNA LoBind, 200 tubes, (4 bags x 50 tubes) | 0030 122 208 |
| Conical Tubes, 50 mL, Protein LoBind, 200 tubes, (4 bags x 50 tubes) | 0030 122 240 |
| Conical Tubes, 50 mL, DNA LoBind, 200 tubes, (4 bags x 50 tubes) | 0030 122 232 |

For ordering information, please check our local website or contact your local sales representative

www.eppendorf.com/Consumables

