

Special edition

Bundles Promotion: Valid NOW
until 31st December 2020

eppendorf

What'sNext

Back to the Lab



Back To The Lab

Safety, Efficiency, Productivity

Promotion



Research® plus &
Centrifuge

New Product Launch



VisioNize® Software
CryoStorage Vials & RackScan b
CellXpert® C170i

Worth Knowing



The Multipipette® Series

Back to the Lab with the tightly sealed Eppendorf tube



Click here for more on

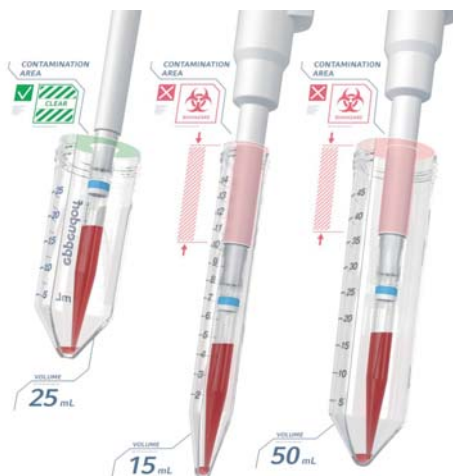
[5 mL Tube](#)

[Conical Tube 25 mL](#)

[Conical Tube 15 mL and 50 mL](#)

Regardless of snap cap or screw cap both formats provides **optimal tight sealing** that prevent leakage during sample collection and sample transportation.

Back in the lab, you can process and finally store your samples safely with the Eppendorf range of sample tubes.



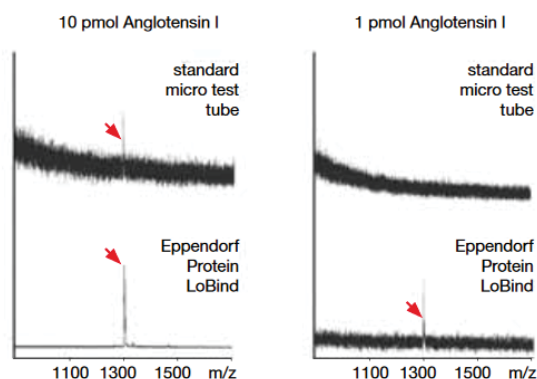
Handling tips:
Use the right tube with your pipette tips to prevent cross contamination

Improve test sensitivity by minimizing sample loss with the LoBind tubes

Eppendorf LoBind Tubes maximize sample recovery by significantly reducing sample binding to the surface. Both the Protein & DNA LoBind tubes are available in formats of 0.5 mL Safe-Lock to Conical Tube 50 mL

Protein LoBind Tube

Suitable for all protein related applications or for storage of samples that contains viruses that have an outer protein coat.

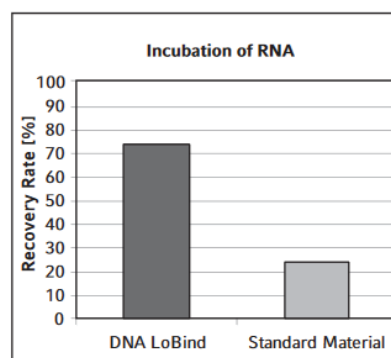


The use of Eppendorf Protein LoBind tubes will yield a significantly higher signal during MALDI-TOF analysis of the peptide angiotensin I than the use of tubes made from standard materials. When the amount of incubated peptide is reduced to 1 pmol, analysis becomes impossible if standard tubes are used.

[Click here for more on Protein LoBind Tube](#)

DNA LoBind Tube

Suitable for sample processing like DNA/RNA extraction from samples that are limited in quantity and storage after the extraction process.



A 100 ng/mL rRNA solution in the TE buffer was incubated at room temperature in standard material tubes and DNA LoBind Tubes. After 24 hours, the RNA solutions were brought from the tubes onto a measuring plate and colored with the reagent RiboGreen. The recovery was determined from the measuring results.

[Click here for more on DNA LoBind Tube](#)

Catch up on your lab work with faster and yet more precise pipetting tools

Dispensing with plates is fast and quick with an electronic multi-channel pipette



The Xplorer® / Xplorer® plus

- > One full charge can work up to 8 hours work
- > Work can still continue while charging if necessary
- > Lower part of pipette can be autoclaved to ensure decontamination
- > Multi-dispensing, sequential dispensing and many more pipetting options

[Click here for more on Xplorer® / Xplorer® plus](#)

Recommended to be used with the ep Dualfilter T.I.P.S.® in order prevent cross contamination from bio-aerosols

[Click here for more on epDualfilter T.I.P.S.®](#)

Do you know?

You can pipette and mix your reagents with your sample without fear of foaming as in this mode the Xplorer®/ Xplorer®plus do not perform a blowout at each mixing steps



Process your samples even faster and safer with aerosol-free dispensing and higher reproducibility



Work even faster and safer with a dispenser tool when your samples are numbered into the hundreds. The Multipette® E3/E3x from Eppendorf provides an aerosol-free pipetting experience with a syringe-like tip so that you can work safer without cross contamination due to aerosols. Additionally, fast and accurate dispensing is achievable with the positive displacement principle inherent in the Multipette®.



The Multipette® E3/E3x

- > Aerosol-free pipetting or dispensing
- > Flexible volumes from 1 µL to 50 mL with 9 different Combipips advanced
- > Dispense all kinds of liquids accurately without worries of dripping or inaccurate volumes

[Click here for more on Multipette E3/E3x](#)



Keep your tools in good working condition before you start back with your lab work

You can do self-cleaning to keep your pipettes decontaminated with the Eppendorf pipettes.

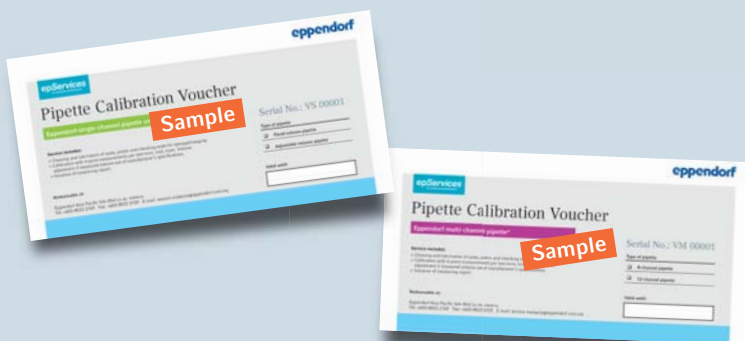


[Click here to watch the full video](#)



Our Malaysian pipette calibration facility has just received an ISO 17025 accreditation to cover the 6-digit balance. This allows us accredited pipette calibration down to 0.1 μL now.

For pipette checks, service and calibration, save more by using the calibration vouchers (Thailand and Malaysia only).





Aluminium Aerosol-Tight Rotor Protects Your Samples and Our Environment

- > This 24-place Centrifuge 5425 has been engineered to safeguard samples, with routine molecular biology, microbiology and biochemistry applications in mind.
- > No sample contamination as air is blown from the outside along the hermetically tight chamber (passive cooling concept)
- > All HPA certified aerosol-tight rotors come with Eppendorf QuickLock® technology for ergonomic lid locking. Closes with only a ¼ turn
- > Quiet as a whisper - noise level of < 51 dB(A) for quiet work environment
- > Comes with 6 different rotors for all your applications
- > Max. speed: 21,330 x g (15,060 rpm)
- > Max. capacity: 24 x 2.0 mL



NEW!

10-place aerosol-tight 5.0 mL rotor
Swing-bucket rotor for PCR strips to enhance throughput



Did you know?

All Eppendorf rotors are made with aluminium. This material can be recycled and reused to create new products.



On Promotion!

Please check with your local sales representative for promotion details

Take advantage of other Centrifuge Bundle Offers!



Centrifuge 5420 - Personal

- > This microcentrifuge with a particularly small footprint was designed with your molecular biology routine applications in mind
- > Applications: DNA/RNA purification, DNA extraction from agarose gels and PCR reaction set-up
- > Standard aerosol-tight rotor for 24 x 1.5/ 2 mL tubes
- > Max. speed: 21,300 x g (15,060 rpm)
- > Adapters for 0.2, 0.4 and 0.5 mL tubes and 0.6 mL BD Microtainer®
- > Super small footprint to save precious lab bench space: 24 x 35 x 22 cm (W x D x H)



Centrifuge 5430 R - Compact and versatile

- A compact benchtop centrifuge for all common lab consumables including spin-columns, centrifugal tubes (0.1, 0.2, 1.5, 2.0, 5.0, 15, 25, 50 mL) & 96 well plates
- > Max. rotor capacity: 48 x 1.5/2 mL, 6 x 50 mL, 2 x MTP
 - > Max. speed: 30,130 x g (17,500 rpm)
 - > Remarkable versatility with 12 different rotors
 - > Choice of rotary knob or keypad version
 - > Sample temperature accuracy at 4°C can be measured via IQ/OQ
 - > Eco shut-off and FastTemp pro® for automatic pre-cooling to save up to 90% energy over night



Centrifuge 5810 R - Reliable and efficient

- The Eppendorf legacy with its renowned quality and reliability. The most compact 3 liter refrigerated centrifuge currently available.
- > Max. speed: 20,913 x g (14,000 rpm)
 - > Swing-bucket rotors for 0.2 mL to 750 mL
 - > Fixed-angle rotors for 0.2 mL to 85 mL
 - > Up to 18 rotors to choose from
 - > Low access height of 29 cm for easy loading and unloading of samples
 - > Compact footprint saves valuable bench space
 - > Aerosol-tight Eppendorf QuickLock® caps and lids for easy, one-hand operation
 - > The lightest fixed-angle rotors in the industry to improve handling and operational safety



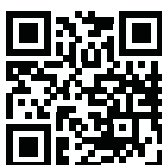
A compact centrifuge to accommodate tubes & bottles from 0.2 mL to 750 mL as well as plates

Cross section of a fixed-angle rotor. Any unnecessary metal is hollowed-out during production to improve thermal conductivity and reduce weight for easy handling



On Promotion!

Please check with your local sales representative for promotion details



Click here
www.eppendorf.com/centrifugation



New Products from Eppendorf - to walk together with you on your journey back to the lab!

Laboratory digitalization and connectivity to improve laboratory efficacy, efficiency and productivity is no longer a foreign idea or a futuristic goal. It is now an industry trend to observe smooth transition and integration of the physical and virtual laboratory. In line with current global trends, Eppendorf is introducing VisioNize[®] software, a digital platform designed to deliver valuable services on VisioNize[®] onboard devices. The Eppendorf CryoStorage Vials and RackScan b which are the latest addition to the product portfolio complete the sample management solution package for our valued customers. In addition, take a look at the CellXpert[®] C170i CO₂ incubator which has won various design awards.



VisioNize[®]
Software





Hello VisioNize®!

VisioNize®, an Eppendorf Digital Platform for Laboratory Connectivity and Digitalization

VisioNize®, an integrated touch interface software on Eppendorf on-board devices brings your laboratory operation and experience to the next level. VisioNize® enables the on-board devices' smart features i.e. alarm notification via email and SMS, alert notification on recurring maintenance/service tasks and remote instrument monitoring. The VisioNize® software is currently available on Eppendorf CryoCube® F740hi ULT Freezer, CellXpert® C170i CO₂ Incubator and SciVario® twin Bioreactor Control System. Soon, Innova® S44i Biological Shaker and Mastercycler® X50 PCR Cycler will be made connectable to VisioNize®. VisioNize® on-board devices have immediate connection to the VisioNize® Digital Lab Space which allow users to access the software via web browsers on computer desktops, laptops, tablets and smartphones.

This gives users a peace of mind regardless whether they are at home, during weekend or when they are away from lab for a long time.

Find out more about VisioNize® – Request for a software Demo on



[Click here for more on information](#)





Eppendorf CryoStorage Vials & RackScan b - An efficient and speedy way to identify and track your high throughput samples storage

Eppendorf CryoStorage Vials are low temperature 2D DataMatrix barcoded storage vials. The 2D DataMatrix incorporates ECC 200 error correction which enables code to be read even when 30 % of the code is damaged. Eppendorf CryoStorage Vials come in 5 different volumes namely 0.5 mL, 1.0 mL, 1.5 mL, 2.0 mL & 4.0 mL and of 2 purity grades ("Eppendorf Quality" and "Sterile"). All volume variants are pre-capped and pre-racked, available in a rack of 48 or 96 vials depending on the volume. The CryoStorage Vials can be scanned using a RackScan b, a bottom scanning camera-based scanner. The RackScan b with the "s" accessory can perform both bottom and side scanning within the same footprint.

[Click here to](#)

[Explore more on this product on:](#)

<https://online-shop.eppendorf.com.my/>

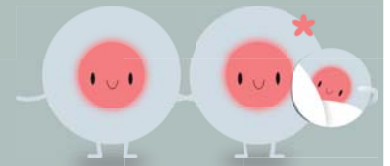


Ordering info:

Product	Tubes per rack	Rack/unit	Order number
0.5 mL vials, pre-capped, pre-racked, Eppendorf standard	96	10	0030 079.400
1.0 mL vials, pre-capped, pre-racked, Eppendorf standard	96	10	0030 079.418
1.5 mL vials, pre-capped, pre-racked, Eppendorf standard	48	10	0030 079.426
2.0 mL vials, pre-capped, pre-racked, Eppendorf standard	48	10	0030 079.434
4.0 mL vials, pre-capped, pre-racked,	48	10	0030 079.442
0.5 mL vials, pre-capped, pre-racked, sterile	96	10	0030 079.450
1.0 mL vials, pre-capped, pre-racked, sterile	96	10	0030 079.469
1.5 mL vials, pre-capped, pre-racked, sterile	48	10	0030 079.477
2.0 mL vials, pre-capped, pre-racked, sterile	48	10	0030 079.485
4.0 mL vials, pre-capped, pre-racked, sterile	48	10	0030 079.493
RackScan b			6002 000.006
"s" Accessory			6002 000.014

Dream Home For Your Cells

The NEW CellXpert® C170i CO₂ Incubator



- > Fanless design for up to 25% more usable space, optimized vibration and air turbulence protection
- > Fast temperature and CO₂ recovery in < 5 min, without setpoint overshoot
- > Highly uniform temperature verified at 27 spots (temperature uniformity + 0.3 °C)
- > Smooth and seamless chamber for easy cleaning 180 °C automatic sterilization
- > Zirconium dioxide O₂ sensor (3 years life span) and dual IR CO₂ sensor that can withstand 180 °C during sterilization
- > Fast & easy documentation via USB-port at the front, ethernet or VisioNize® touch interface
- > No recurring cost of regular parts e.g. HEPA filters and UV lamps
- > Winner of multiple Good Design awards
- > Quality made in Germany



VisioNize® Software



Are you looking for a 170 L - class CO₂ incubator that provides optimized growth conditions for your sensitive cells and makes monitoring and documentation easy? An incubator that also saves money and is produced with highest quality standards? Welcome to the new CellXpert® C170i and learn more below.

Warm and cosy. Anywhere for your cells.

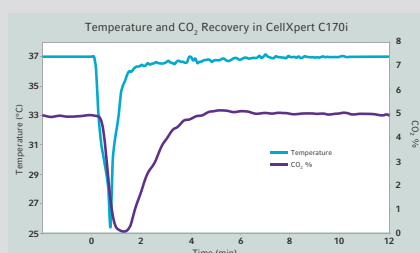
- > CellXpert CO₂ incubators provide optimal conditions for cell cultures independent from their location on the shelves
- > Highly uniform temperature distribution throughout the whole incubator achieved by several sensors placed directly at the different heating circuits surrounding the chamber and the door
- > The temperature uniformity is verified at 27 spots inside the chamber according to the German Norm 12880
- > Quick temperature recovery after door opening (less than 5 min without temperature overshoot)



Position of the 27 sensors to verify equal temperatures at different locations.



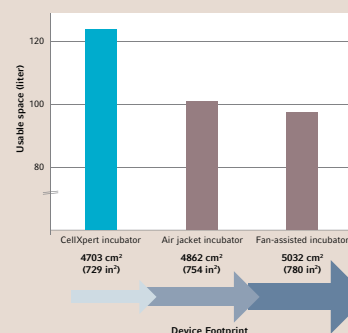
[Click here to Download the White Paper to learn more](#)



More space for your cells.

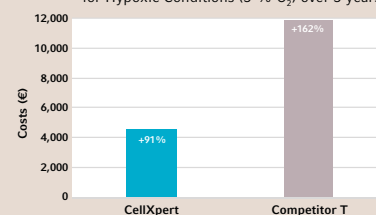
Less maintenance and recurring cost for yourself

- > Because of minimized internal parts (e.g. no fan), the CellXpert CO₂ incubators offer up to 25% more usable space (~30,000,000 more cells) to grow your cells
- > Save up to 8300€ over 5 years due to significantly reduced gas consumption (CO₂ and N₂) and no regular replacement of spare parts (HEPA filters, UV lamps etc.)
- > The racking and shelves can be removed in less than two minutes for quick cleaning and disinfection



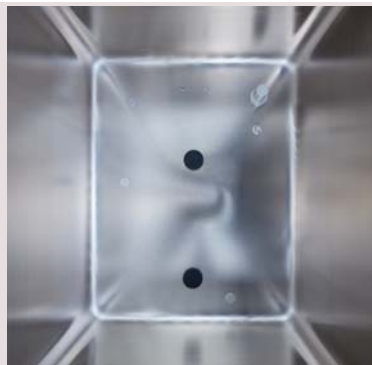
[Click here to Download the White Paper to learn more](#)

Cost Comparison for N₂ and CO₂ for Hypoxic Conditions (5 % O₂) over 5 years



Clean and safe growth conditions for your cells

- > Fanless design to reduce airborne contamination
- > Seamless chamber and minimal internal parts for easy cleaning
- > 180 °C High Temperature Disinfection (HTD)
- > All internal parts are sterilisable at 180 °C.
- > No non-sterilizable fan-associated HEPA filter which could be a source of contamination
- > Options for copper interior and segmented inner doors (4 or 8)
- > Options for humidity and water level monitoring



[Click here : Easy cleaning and reliable contamination prevention](#)



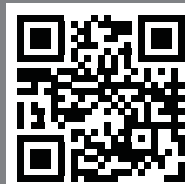
[Click here to Download the White Paper to learn more](#)



Smart Cultivation with VisioNize® Touch Interface

- > Stay connected to critical information about the CellXpert® C170i even when you are not in the lab with remote monitoring and notifications enabled by VisioNize®
- > SMS or email notification in case of predefined alarms or events
- > Comprehensive documentation of CO₂, temperature, door opening times, alarms, (optional relative humidity & O₂) etc. for easy troubleshooting in case of alarms

Learn more about the CellXpert®, available options, and request an individual quote:
www.eppendorf.com/co2-incubators

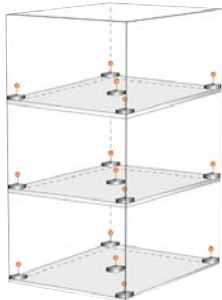


epServices
for premium performance



Freezer Temperature Mapping Service

Wonder how is the condition of your ULT Freezer when you go back to your lab after a long break?
Why not engage with Eppendorf Freezer Temperature Mapping Service to check?



[Click here to
learn more about
our service support](#)

By engaging with Eppendorf Freezer Temperature Mapping Service, you may enjoy the following benefits:

- > Ensures that the temperature profile i.e. accuracy and homogeneity of your freezer is validated and in optimal condition.
- > Peace of mind as you do not need to worry about the security of your valuable samples stored in the freezer.
- > Audit proof temperature mapping documentation for traceability.

Select either the 9 or 15 points temperature mapping for a typical duration of 24 to 72 hours using precise and calibrated probes with Eppendorf.

Ordering info:

Product	Order number
Temperature Mapping	0082 070.360
	Service needs to be customized based on duration and number of probes. Please contact your local service organization if temperature mapping is offered in your country.

We would like to receive your feedback
www.eppendorf.com/whatsnext-feedback

Your local contact

Contact us:
www.eppendorf.com/contact