

Eppendorf *epMotion*[®] Editor 40

Installation guide

Software version 40.7

Copyright© 2018 Eppendorf AG. All rights reserved, including graphics and images. No part of this publication may be reproduced without the prior permission of the copyright owner.

Eppendorf® and the Eppendorf Brand Design are registered trademarks of Eppendorf AG, Germany.

ep*Motion*® is a registered trademark of Eppendorf AG, Germany.

Registered trademarks and protected trademarks are not marked in all cases with ® or ™ in this manual. U.S. Design Patents are listed on www.eppendorf.com/ip

Table of contents

| | | |
|----------|---|-----------|
| 1 | Warranty and liability | 5 |
| 2 | Directory structure | 5 |
| 3 | System requirements | 5 |
| 3.1 | Hardware requirements | 5 |
| 3.2 | Software requirements | 5 |
| 4 | Installing the software | 6 |
| 5 | License | 7 |
| 5.1 | Requesting an activation license | 7 |
| 5.2 | Importing the license file | 9 |
| 6 | Working with the Eppendorf epMotion® Editor 40 | 10 |

1 Warranty and liability

Our software is produced with the highest degree of care and attention according to the current state of technology.

You should only use software on ep*Motion* systems that has been tested and approved by Eppendorf.

Eppendorf guarantees that at the time of shipping the data carrier and accompanying documentation are fully functional and complete.

If either the data carrier or the accompanying documentation is found to contain errors, the licensee shall be entitled to receive a replacement within a warranty period of 12 months.

Claims above and beyond the foregoing are expressly rejected.

Eppendorf AG does not provide support for configurations where the ep*Motion* Editor 40.x is connected remotely to the integrated PC.

- i** By installing Eppendorf ep*Motion*® Editor 40 and its associated components, you indicate your acceptance of the accompanying license agreement!

2 Directory structure

You will find the following directories and content on the CD-ROM:

| | |
|----------|--|
| Manuals | Eppendorf ep <i>Motion</i> ® Editor 40 software manual |
| Software | ep <i>Motion</i> Editor 40.x |

3 System requirements

3.1 Hardware requirements

- more than 1 GB of RAM
- more than 1 GB of available hard disk space

3.2 Software requirements

- Microsoft® Windows 7 (32 bit or 64 bit)
- Microsoft® Windows 8 (32 bit or 64 bit)
- Microsoft® Windows 10 (32 bit or 64 bit)

4 Installing the software

By purchasing the Eppendorf epMotion® Editor 40 software on CD-ROM, you have acquired one license. You can use the software on one computer.

To also use the software on other computers, you can buy additional licenses. For further information refer to the software manual and our website.

To run the Eppendorf epMotion® Editor 40, the software has to be activated by a computer-specific license.

- Therefore, the license has to be activated on the computer on which the epMotion Editor 40.x software program is to be run.

To install Eppendorf epMotion® Editor 40 software on a PC, proceed as follows:

1. Make sure that all other Windows programs are closed.
2. Insert the installation CD-ROM into the CD drive.
3. Start epMotion Editor 40.x from the CD.

The installation assistant will guide you through the set-up process step by step. Afterwards you will see 2 symbols on your desktop.



Fig. 1: Symbols on your desktop

- Do not run epMotion Editor 40.x directly after the end of installation. The epMotion Editor 40.x only works with a computer-specific license.

5 License

5.1 Requesting an activation license

Prerequisites

- The computer has either access to the Internet or a USB storage medium is connected to the computer.



Fig. 2: License Manager symbol

1. Open the License Manager.



Fig. 3: License Manager

2. Press the Show computer information button.
 The Computer Identity Information window opens.

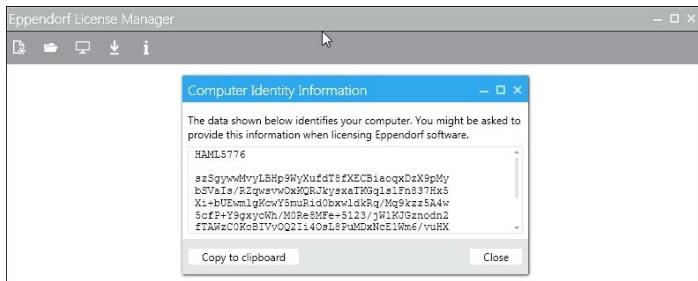


Fig. 4: Computer Identity Information

3. Press the Copy to clipboard button to copy the text to the window clipboard. Paste the text to a text file (*.txt).
 4. Save the text file on your computer. If you do not have Internet access on your computer, save the text file on a USB storage medium.
 5. To request your epMotion Editor 40.x license file, register on the following webpage www.eppendorf.com/software-licensing.
 6. Copy the content of the text file to the appropriate field on the webpage.
- i** You will receive an epMotion Editor 40.x license file per e-mail within 48 hours.

5.2 Importing the license file

Prerequisites

- The epMotion Editor license file is located on the computer where the Eppendorf epMotion® Editor 40 is installed or on a USB storage medium.



Fig. 5: Load license

1. Open the Eppendorf License Manager.
2. Click the Load license button.
The Windows Explorer will open.

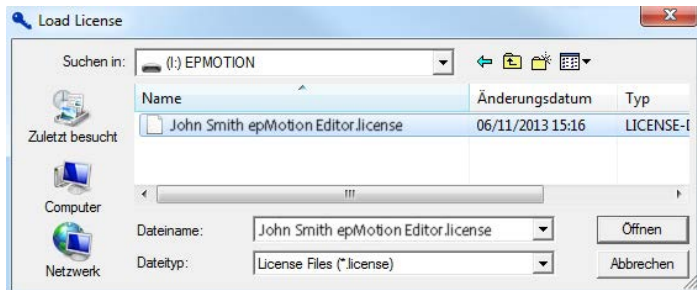


Fig. 6: Select the epMotion Editor license file

3. Select the *epMotion* Editor license file and click the Open button.

The License is inserted.



Fig. 7: Name of the imported license

6 Working with the Eppendorf *epMotion*® Editor 40

The Eppendorf *epMotion*® Editor 40 is a special version of the epBlue software. The Eppendorf *epMotion*® Editor 40 can be used to create, edit and simulate applications on a computer. The Eppendorf *epMotion*® Editor 40 is compatible with epBlue from version 40.x onwards.

Prerequisites

- The Eppendorf *epMotion*® Editor 40 software is installed on your computer.
 - The license is imported in the license manager.
- ▶ Run the Eppendorf *epMotion*® Editor 40.
 - ▶ See the Eppendorf *epMotion*® Editor 40 software manual on your CD for operation details.

Evaluate your manual

Give us your feedback.

www.eppendorf.com/manualfeedback

Your local distributor: www.eppendorf.com/contact

Eppendorf AG · 22331 Hamburg · Germany

eppendorf@eppendorf.com · www.eppendorf.com