

Improve your
cell culture now



CellXpert

Culture of Tomorrow

The new CellXpert® C170i CO₂ Incubator

Are you looking for a 170 L class CO₂ incubator that provides flexibility for the future, makes monitoring and documentation easy, and provides optimized growth conditions, even for your sensitive cells? An incubator that also saves money and is produced to the highest standards of quality? Let us introduce CellXpert – a new family of Eppendorf CO₂ incubators.

Stay flexible for the future

- > Upgrade or modify your device later in your lab (e.g. humidity monitoring, door handle position)
- > Advanced user interface for easy and complete control over parameter settings, monitoring, and documentation

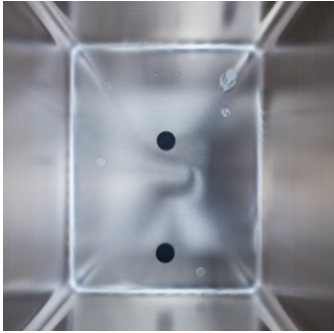
Safety for your cells

- > Uniform temperature with multiple sensors verified at 27 points (German Norm DIN 12880)
- > Fast temperature and CO₂ recovery in less than 5 minutes without overshoot
- > Vibration and turbulence protection with fan-less design
- > 180 °C high-temperature disinfection (HTD)

Save money

- > Significantly reduced gas consumption with smart gas control
- > Up to 25 % more usable space with fan-less design
- > No recurring costs for internal replacement parts (HEPA filters, UV lamps etc.)

Make Your Cell Culture Ready for the Future



Easy cleaning and disinfection: Disassemble the chamber components within 40 seconds, quickly wipe the seamless chamber, and simply follow the step-by-step instructions for 180 °C HTD.

Full control and easy documentation with the intuitive, easy-to-use VisioNize® user interface. Export performance charts or HTD-protocols within seconds via the integrated USB ports on the front panel. Monitor your device with the VisioNize connected lab system.

Produced in Hamburg, Germany to the highest quality standards and with materials you can rely on.

CellXpert® C170i Technical Specifications

Capacity	167 L
Configuration	Benchtop, under-bench, floor-standing, or stackable
High-temperature disinfection	Standard, 180 °C
Display	Touch screen, onboard data log
In-lab upgradeable options	Humidity sensor, water level sensor, and door handle position (left/right)
Temperature range	4 °C above ambient to 50 °C
Temperature control	± 0.1 °C
Sensor technology	CO ₂ : Dual-channel Infrared (IR) Multiple fast feedback temperature sensors on the chamber
Copper options	Chamber, water tray, shelves
Net weight (depending on options)	81 – 105 kg (179 – 231.5 lbs)
Dimensions (W x D x H)	
Internal	53.9 x 44.5 x 69.2 cm (21.2 x 17.5 x 27.2 in)
External	71.8 x 71.5 x 90.0 cm (28.3 x 28.1 x 35.4 in)

> Learn more about the CellXpert CO₂ Incubators & contact your local Eppendorf representative:

www.eppendorf.com/CellXpert



Your local distributor: www.eppendorf.com/contact
Eppendorf AG · Barkhausenweg 1 · 22339 Hamburg · Germany
eppendorf@eppendorf.com · www.eppendorf.com

www.eppendorf.com/CellXpert