

For more reliable expansion and differentiation of PSCs and MSCs



## CellXpert® for PSC- and MSC-Culture

**Support for challenging cultures: the new CellXpert® C170i CO<sub>2</sub> Incubator**

Spontaneous differentiation and irreproducible results continue to be the major challenges in cultivation of pluripotent stem cells (ESCs and iPSCs) and mesenchymal stem cells (MSCs). The new CellXpert C170i CO<sub>2</sub> Incubator from Eppendorf supports stem cell researchers to achieve more reliable results, protect precious samples from contamination, and to keep the lab flexible for the future.

### **Optimized growth conditions for more reproducible results**

- > Fast temperature and CO<sub>2</sub> recovery in less than 5 min after door opening, with no setpoint overshoot
- > Fanless design for optimized vibration and air turbulence protection
- > Temperature homogeneity

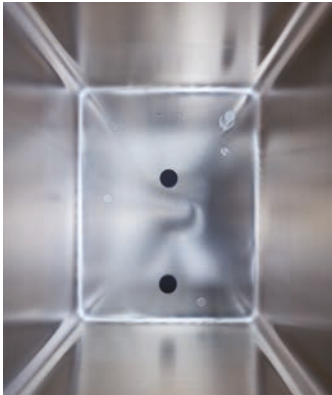
### **Easy cleaning and reliable contamination prevention**

- > Seamless chamber
- > Fanless design
- > 180 °C automatic sterilization
- > Option for 4 or 8-segmented inner doors
- > Options for antimicrobial copper interior

### **Save money and stay flexible for the future of your stem cell lab**

- > 0.1–20 % or 1–20 % O<sub>2</sub> regulation and other in-field upgradeable options
- > Significantly reduced CO<sub>2</sub> and N<sub>2</sub> consumption
- > Comprehensive documentation of culture conditions and instant alarms with VisioNize® laboratory monitoring system

# For more reliable expansion and differentiation of PSCs and MSCs



### Easy cleaning and disinfection

Disassemble the chamber components within 40 seconds, quickly wipe the seamless chamber, and simply start the 180 °C sterilization.

**Video:** [Easy cleaning and reliable contamination prevention](#)



### Uniform temperature verified at 27 spots inside

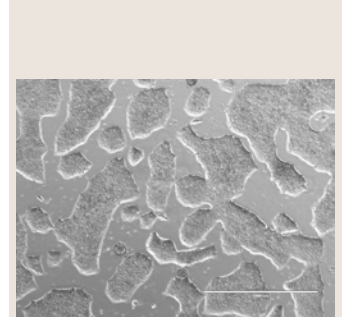
The novel approach of multiple, independent temperature sensors inside was verified according to the German DIN 12880:2007-05 norm.

**White Paper:** [CO<sub>2</sub> Incubator Temperature Control in the CellXpert](#)



### Vibration and turbulence protection – no fan

Ever experienced cell growth variations between different shelves, especially between the top shelf and others? The fanless design helps to protect your cells from vibrations and air turbulences that can disrupt the protective micro-atmosphere above the medium.



### Proven performance with sensitive cells

Growth conditions have been verified via extensive testing, e.g. by long-term cultivation of demanding iPSCs.

## CellXpert® C170i Ordering Information

### Recommended CellXpert® C170i configuration – for cultivation of PSCs and MSCs:

- > 4-segmented inner doors (minimize atmosphere disruptions during door openings, add protection from airborne contaminants, reduce gas consumption)
- > 0.1–20 % or 1–20 % O<sub>2</sub> regulation (if applicable – available for upgrade later)

Description	Order no.				
	230 V, 50/60 Hz European	230 V, 50/60 Hz UK/HKG	230 V, 50/60 Hz Australia	230 V, 50/60 Hz China	100–120 V, 50/60 Hz USA/Japan
Door handle right	6731 001.041*	6731 001.042*	6731 001.043*	6731 001.044*	6731 011.045*
Door handle left	6731 001.051	6731 001.052	6731 001.053	6731 001.054	6731 011.055
Copper package for critical parts (water tray and shelves)	6731 080.013	6731 080.013	6731 080.013	6731 080.013	6731 080.013

\* Stock article; all others are built-to-order

Learn more about the new CellXpert, available options, and request an individual quote:

[www.eppendorf.com/co2-incubators](http://www.eppendorf.com/co2-incubators)

Your local distributor: [www.eppendorf.com/contact](http://www.eppendorf.com/contact)  
Eppendorf AG · Barkhausenweg 1 · 22339 Hamburg · Germany  
[eppendorf@eppendorf.com](mailto:eppendorf@eppendorf.com) · [www.eppendorf.com](http://www.eppendorf.com)

[www.eppendorf.com](http://www.eppendorf.com)