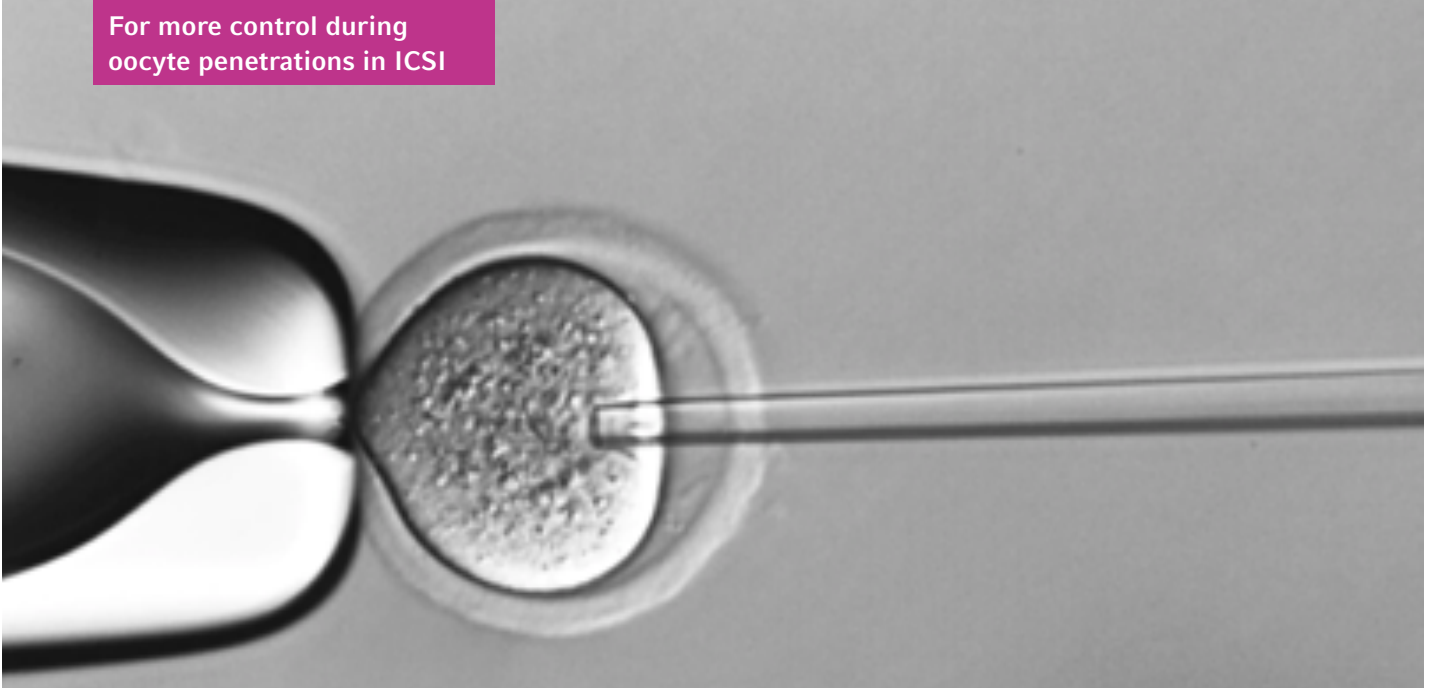


For more control during  
oocyte penetrations in ICSI



# Piezo-ICSI

## Still struggling with low oocyte survival rates after conventional ICSI?

ICSI in mammals is challenging and that is largely due to two reasons: An opaque oolemma makes it difficult to recognize the moment of penetration (e.g. in equine, porcine, bovine, or ovine ICSI) or a low cytoplasm viscosity combined with an elastic oolemma results in low oocyte survival rate after microinjection (e.g. in murine ICSI). The Piezo-ICSI system from Eppendorf ensures more control over penetration of a challenging oolemma - without cytoplasm aspiration and associated stress for the cytoskeleton. This supports higher oocyte survival rates in mammalian ICSI.

### **PiezoXpert® and microcapillaries for Piezo-ICSI**

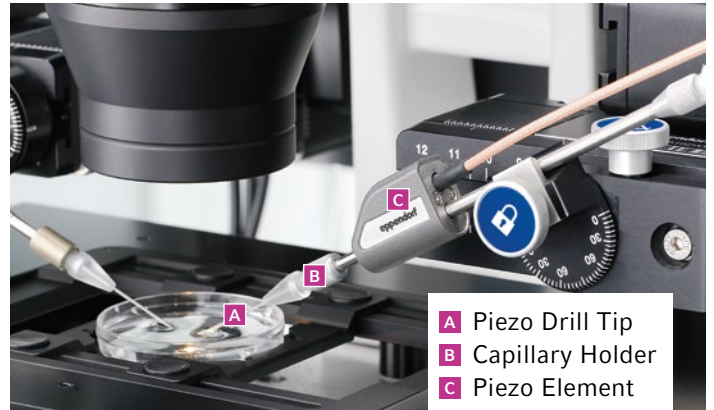
- > Compatible with micromanipulators of major manufacturers
- > Compact design of the control unit and the Piezo actuator saves precious workstation space
- > PiezoXpert is also usable for embryo biopsies, enucleation and nuclear transfer, ES/iPSC-transfer, and more



# Your Complete Piezo-ICSI Solution

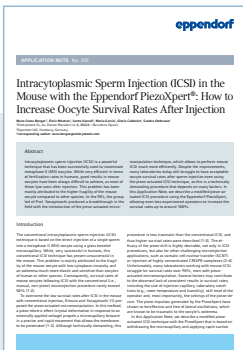
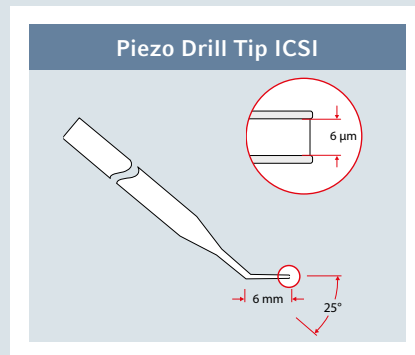
## PiezoXpert®

- > Optimized force transmission: Piezo element is located and fixed close to the capillary holder and capillary
- > Reproducible capillary positioning, optimized axial force transfer, and leak tightness: Capillary holder with two O-rings and capillary insertion stop position
- > Easy to fix capillary without the need of a silicon ring
- > ICSI dual pulse function: Fast and direct retrieval of Zona pellucida and oolemma-specific pulse parameters, e.g. with foot switch A and B
- > Two years warranty



## Microcapillaries for Piezo-ICSI

- > Ready-to-use, individually packaged holding capillaries (VacuTip I and II) and Piezo Drill Tip ICSI
- > High batch-to-batch production consistency with 100% visual inspection
- > Sterilized via validated gamma irradiation to SAL 10<sup>-6</sup>
- > Tested for endotoxins/pyrogens (LAL)



Application Note: Piezo-ICSI in mouse  
 Click or scan to learn more:  
[www.eppendorf.com/appnote395](http://www.eppendorf.com/appnote395)



Discover more helpful products, request a demo, or an individual quote:  
[www.eppendorf.com/cellmanipulation](http://www.eppendorf.com/cellmanipulation)



Your local distributor: [www.eppendorf.com/contact](http://www.eppendorf.com/contact)  
 Eppendorf AG · Barkhausenweg 1 · 22339 Hamburg · Germany  
[eppendorf@eppendorf.com](mailto:eppendorf@eppendorf.com) · [www.eppendorf.com](http://www.eppendorf.com)

[www.eppendorf.com](http://www.eppendorf.com)