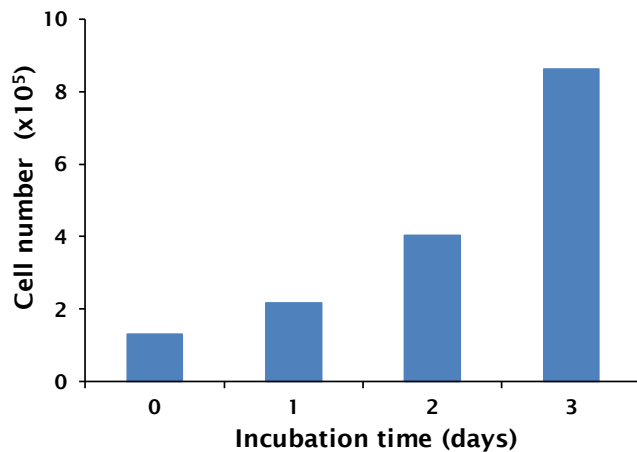


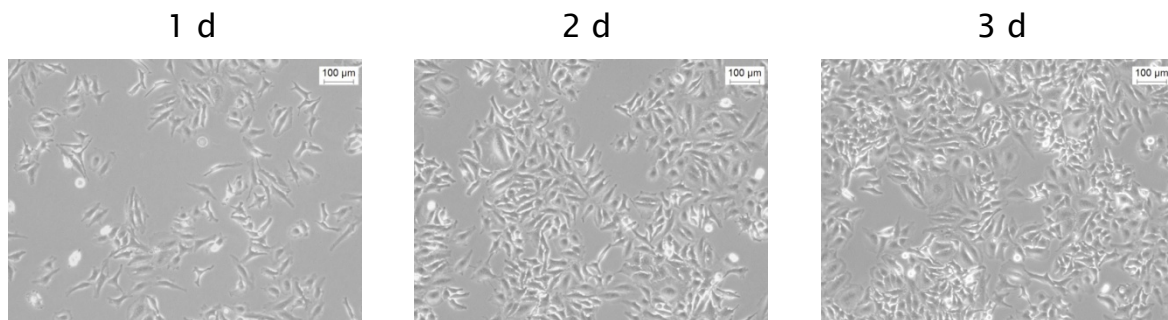
# Cell type: HeLa

## Performance of Eppendorf Cell Culture Consumables (TC treated)

**Procedure:** HeLa cells were seeded in appropriate culture medium (RPMI 1640, 10 % FBS). Cell Culture vessels were incubated at 37 °C with a humidified 5 % CO<sub>2</sub> atmosphere. Cell growth and morphology was monitored on day 1, 2 and 3 post-seeding.



Bars represent average count of two wells of an Eppendorf 6-Well Cell Culture Plate



Representative light microscope images (100X magnification)

The tissue culture (TC) treated surface of Eppendorf Cell Culture Consumables allows optimal attachment and homogeneous growth of **HeLa** cells.

Your local distributor: [www.eppendorf.com/contact](http://www.eppendorf.com/contact)

Eppendorf AG · 22331 Hamburg · Germany  
 eppendorf@eppendorf.com · [www.eppendorf.com](http://www.eppendorf.com)

[www.eppendorf.com](http://www.eppendorf.com)