



# Identify Value

SafeCode Barcoded Microtubes

# »Keep it Scanned, Keep it Safe.«

Microtubes are integral to the workflow in your laboratory. Your samples and assets depend on vessels that will not let you down. But this goes beyond construction and ergonomics; you need vessels that will stand up to abuse and scrutiny of everyday labors and long-term storage. SafeCode barcoded microtubes are your solution to those »little problems« that transform into major issues.

**Smart labeling of your high-value samples is crucial for safe identification and ultimately for safe results.**



## Suffering from unreadable samples?

- > Pre-labeled off-the-shelf consumables for immediate use
- > Store all relevant experimental data for easy documentation
- > Reliable long-term labels for safe sample ID



## Require reliability?

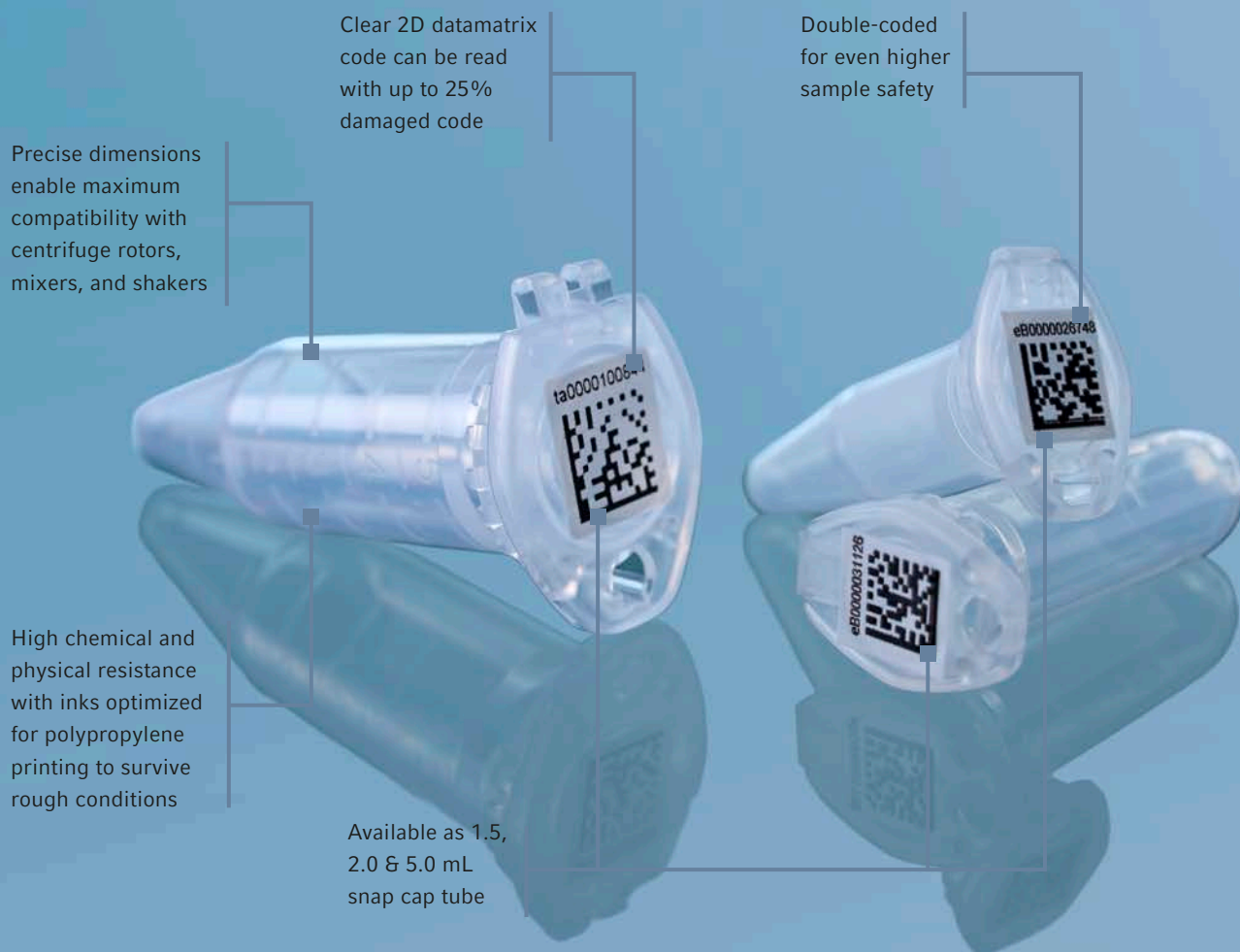
- > Eppendorf has been manufacturing sample tubes for decades and now your favorite tubes just got better
- > All the dependability of Eppendorf meets the added security of digitalization

The screenshot shows the eLabInventory software interface. On the left is a 'Navigation' pane with a tree view of storage units: -20 freezer, -80 freezer Archive, -80 Freezer I, tower A (containing box 1, box 2, box 3, box 4), tower B, tower C, tower D, Cell line freezer, Fermentator, Media Shelf, N2-Vet, Plasmid collection, Safety Cabinet big lab, and Equipment. The main area displays 'My Lab - 80 Freezer I - tower A - box 1' in 'Box View' mode. It shows a 9x9 grid of sample slots labeled A1-I1 to I9. Each slot contains a colored circle representing a sample type. A legend at the bottom left defines the colors: Antibody (blue), Cell Line (red), Chemical (green), Non-purified cell (orange), Custom Sample Type (yellow), and Demo Sample Type (grey).

	A	B	C	D	E	F	G	H	I
1	A1	B1	C1	D1	E1	F1	G1	H1	I1
2	A2	B2	C2	D2	E2	F2	G2	H2	I2
3	A3	B3	C3	D3	E3	F3	G3	H3	I3
4	A4	B4	C4	D4	E4	F4	G4	H4	I4
5	A5	B5	C5	D5	E5	F5	G5	H5	I5
6	A6	B6	C6	D6	E6	F6	G6	H6	I6
7	A7	B7	C7	D7	E7	F7	G7	H7	I7
8	A8	B8	C8	D8	E8	F8	G8	H8	I8
9	A9	B9	C9	D9	E9	F9	G9	H9	I9

## Lost in samples and processes?

- > Easy sample management with eLabInventory software
- > Find free spots in the freezer for efficient space usage
- > Barcode reading for safe sample identification
- > Reliable process documentation with eLabJournal software



Precise dimensions enable maximum compatibility with centrifuge rotors, mixers, and shakers

Clear 2D datamatrix code can be read with up to 25% damaged code

Double-coded for even higher sample safety

High chemical and physical resistance with inks optimized for polypropylene printing to survive rough conditions

Available as 1.5, 2.0 & 5.0 mL snap cap tube

# Clearly Coded

## Eppendorf SafeCode System

»Vessels must be labeled« – naturally, every lab member agrees. In reality you often find vessels in your laboratory without any labeling or with non-readable labeling. Clear labeling is recommended to make reading as easy and as reliable as possible for everyone.

Printed labels on vessels in plain writing are the bare minimum for reliable reading. Barcodes or 2D datamatrix codes are one step further towards a fast and safe sample identification.

- > Pre-labeled barcoded microtubes with 2-level-coding in different formats enable you to improve your processes
- > Benefit from digitalization at Eppendorf: download all relevant, ID-specific documentation for your tube, like certificates, drawings, lot numbers, and supplier order numbers using the Eppendorf DataPort
- > Manage your barcoded samples with sample management software like eLabInventory

**Smart labeling of your high-value samples is crucial for safe identification and ultimately for safe results.**

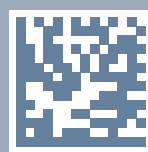


Learn more about the SafeCode System  
Visit [www.eppendorf.com/SafeCode](http://www.eppendorf.com/SafeCode)

## Eppendorf Tubes®

- > Made of high-quality, virgin polypropylene (PP) free of biocides, plasticizers, and latex
- > Produced with optimized, highly polished molds without the use of slip agents like oleamides, erucamides, or stearamides
- > Designed and manufactured under ISO 13485 and ISO 9001 certified Quality Management System

## Eppendorf DataPort

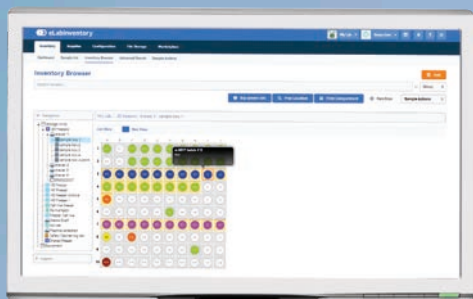


Do you require detailed documentation for lab certifications? Crucial data about your tubes, like **Lot Number, Order Number, Certificates, etc.**, are available via the **Eppendorf DataPort website**. Export manually into databases or automatically to eLabInventory or eLabJournal®.

[Learn More!](#)



## eLabInventory



### Digitize your sample and reagent storage

- > Stores any type of samples, specimens, and materials for high flexibility
- > Intuitive user interface includes visual inventory browsing for easy handling
- > Barcode labeling and scanning for high-throughput
- > Fully customizable data records for samples, storage locations, and equipment
- > Import/export to other formats for data flexibility
- > Supports 21 CFR part 11 compliance for documentation security

Hand-written labels smudge and quickly become unreadable



Manually printed labels take time, effort, and will still detach



Pre-labeled for immediate use and clearly identified for easy reading



Resistant to scratching

Start a free 30-day trial of eLabInventory!  
Visit [www.eLabNext.com/eppendorf](http://www.eLabNext.com/eppendorf)





#### **A system to meet your documentation needs**

The SafeCode System is designed to meet your needs at your convenience. Save time and effort with the correct plates, apps, software, and storage solutions to make sure your valuable work ends up getting into publications and manufacturing, not the waste bin.

See for yourself &  
[Request your own SafeCode Sample!](#)



## Ordering Information

Description	Order no.
<b>Safe-Lock Tube 1.5 mL</b> , PCR clean, SafeCode, 500 tubes	0030 113.403
<b>Safe-Lock Tube 2.0 mL</b> , PCR clean, SafeCode, 500 tubes	0030 113.446
<b>Tube 5.0 mL</b> , with snap cap, PCR clean, SafeCode, 200 tubes	0030 113.462
<b>Eppendorf Tubes® 5.0 mL</b> , with screw cap, Sterile, SafeCode, 200 tubes	0030 113.500
<b>Eppendorf Conical Tubes 15 mL</b> , Sterile, SafeCode, 500 tubes	0030 113.489
<b>Eppendorf Conical Tubes 50 mL</b> , Sterile, SafeCode, 500 tubes	0030 113.497
<b>Eppendorf CryoStorage Vials</b> , SafeCode portfolio	See online
<b>DWP 96/2000</b> , SafeCode, 20x (5 bags x 4 plates)	0030 113.527
<b>DWP 96/1000</b> , SafeCode, 20x (5 bags x 4 plates)	0030 113.535
<b>DWP 96/500</b> , SafeCode, 40x (5 bags x 8 plates)	0030 113.543
<b>DWP 384/200</b> , SafeCode, 40x (5 bags x 8 plates)	0030 113.551
<b>PCR twin.tec 96</b> , skirted, SafeCode, 25x (5 bags x 5 plates)	0030 113.560
<b>PCR twin.tec 384</b> , skirted, SafeCode, 25x (5 bags x 5 plates)	0030 113.578
<b>MTP 96/V clear</b> , PCR clean, SafeCode, 80x (5 bags x 16 plates)	0030 113.586
<b>eLabInventory software</b>	See online
<b>eLabJournal® software</b>	See online



Discover the entire SafeCode System, including CryoStorage Vials, Eppendorf RackScan, SafeCode Barcoded Tubes, eLabInventory, eLabJournal, & much more!

[www.eppendorf.com/SafeCode](http://www.eppendorf.com/SafeCode)



Your local distributor: [www.eppendorf.com/contact](http://www.eppendorf.com/contact)  
 Eppendorf SE · Barkhausenweg 1 · 22339 Hamburg · Germany  
[eppendorf@eppendorf.com](mailto:eppendorf@eppendorf.com) · [www.eppendorf.com](http://www.eppendorf.com)

[www.eppendorf.com](http://www.eppendorf.com)

The eLabInventory logo and eLabJournal® are registered trademarks of Bio-ITech BV, Netherlands.  
 Eppendorf®, the Eppendorf Brand Design, and Eppendorf Tubes® are registered trademarks of Eppendorf SE, Germany.  
 All rights reserved, including graphics and images. Copyright © 2025 by Eppendorf SE.