

Instructions for use
Wall mount
English (EN)

1 Wall mount

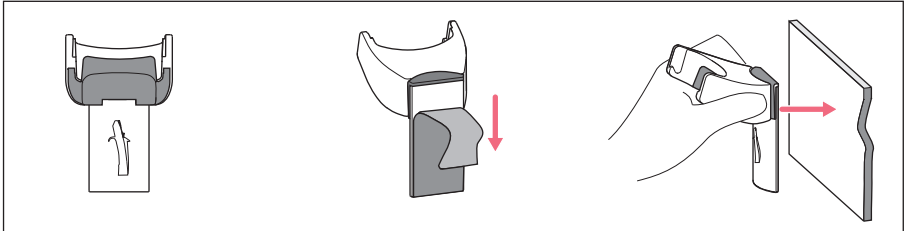


Fig. 1: Wall mount for Multipipette® E3/E3x, Repeater® E3/E3x, Multipipette® (X)stream and Repeater® (X)stream

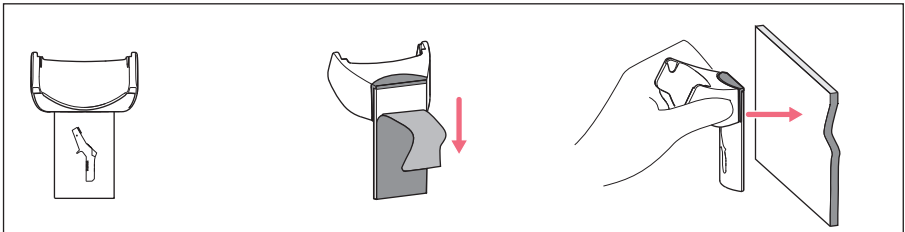


Fig. 2: Wall mount for Eppendorf Xplorer®/Xplorer® plus

2 Mounting the wall mount

1. Clean glass or ceramic surfaces (e.g., with ethanol) and allow them to dry.
2. Remove protective film and firmly press the wall mount against the cleaned surfaces. Objects may only be placed in the wall mount after 24 hours.

3 Cleaning the wall mount

- ▶ Use a damp cloth and mild cleaning agent to wipe off contamination.

4 Removing the wall mount

- ▶ Rotate the wall mount and remove adhesive tape.

Instructions for use
 Wall mount
 English (EN)

5 Loading the rechargeable battery

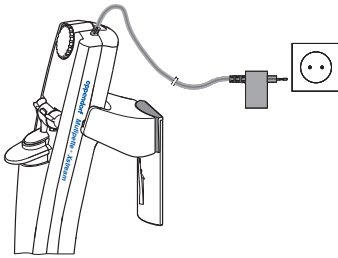


Fig. 3: Multipipette® E3/E3x, Repeater® E3/E3x, Multipipette® (X)stream, Repeater® (X)stream

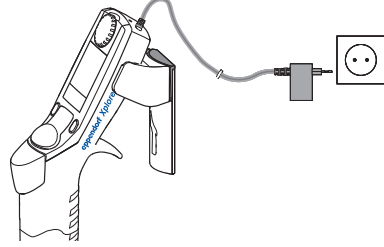


Fig. 4: Eppendorf Xplorer®/Xplorer® plus

- ▶ Mount the device in the wall mount and charge it using the mains/power supply device.

6 Materials

Wall mount	Material
Available surfaces	Acrylonitrile styrene acrylate with polycarbonate (ASA/PC)

7 Ordering information

Order no. (International)	Description
4861 615.001	Wall mount for Eppendorf Xplorer/Xplorer plus
4986 604.001	
4861 616.008	Sticky tape for wall mount 1 piece