

For a more reliable, cost-efficient cell culture lab



# CellXpert® C170 CO<sub>2</sub> Incubator

**CellXpert – the family of CO<sub>2</sub> Incubators and CO<sub>2</sub> Incubator shakers from Eppendorf**

Are you looking for a 170 L class CO<sub>2</sub> incubator that makes cleaning easy, provides reliable contamination protection and delivers optimized growth conditions? How about a CO<sub>2</sub> incubator that can also save you money and is ready for the future of your cell culture lab? Discover the CellXpert C170, the more economical, basic version of the C170i.

## **Optimized growth conditions for more reproducible results**

- > Fast temperature and CO<sub>2</sub> recovery in less than 5 min after door opening with dual-channel IR sensor–no setpoint overshoot
- > Fanless design for optimized vibration and air turbulence protection
- > Temperature homogeneity verified at 27 internal points

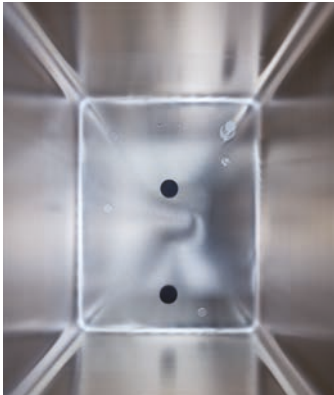
## **Easy cleaning and reliable contamination prevention**

- > Seamless chamber
- > Fanless design
- > 140 °C disinfection routine
- > Option for segmented inner doors
- > Removable water tray for safe and easy weekly cleaning and refill

## **Save time, money, and lab space**

- > Up to 25% more usable space
- > No internal expendable parts like fan-associated HEPA-filters or UV-lamps that require maintenance and replacement
- > 3/4 shelves (depending on model) and 2 access port already included

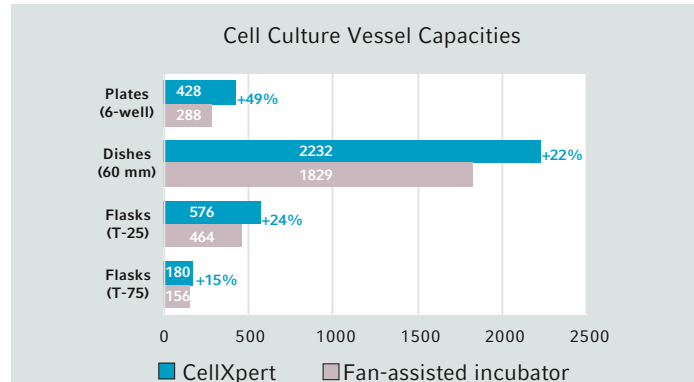
# Make the Most of Your Lab



## Easy cleaning and disinfection

Disassemble the chamber components within 40 seconds, quickly wipe the seamless chamber, and simply start the 140 °C disinfection.

**Video:** [Easy cleaning and reliable contamination prevention](#)



## Up to 25% more usable space while saving lab space

The fanless design omits the need for additional interior parts or structures like fans, air ducts, HEPA-filters, water-jacket, etc.– for more space inside.

## Vibration and turbulence protection – no fan

Ever experienced cell growth variations between different shelves, especially between the top shelf and others? The fanless design helps to protect your cells from vibrations and air turbulences that can disrupt the protective micro-atmosphere above the medium.



## Stack it your way

You can stack your CellXpert C170 underneath other CO<sub>2</sub> incubators including models from Thermo Scientific®, PHCbi (formerly Panasonic®), or BINDER®.

**White Paper:** [How to save money and lab space with the CellXpert](#)



## CellXpert C170i or C170 – What is the best choice for your needs?

If you require future flexibility, O<sub>2</sub> control, water level or humidity monitoring, advanced documentation, user management, or if you have a requirement for 180 °C sterilization – the CellXpert C170i is recommended.

[Compare the CellXpert C170i with the C170](#)

How do you ensure optimal cell growth conditions in your incubators? Monitor your incubators from anywhere with VisioNize® Lab Suite and track all related device parameters such as temperature, O<sub>2</sub> and CO<sub>2</sub>.

[Find out more!](#)

**Your local distributor:** [www.eppendorf.com/contact](http://www.eppendorf.com/contact)  
Eppendorf SE · Barkhausenweg 1 · 22339 Hamburg · Germany  
[eppendorf@eppendorf.com](mailto:eppendorf@eppendorf.com) · [www.eppendorf.com](http://www.eppendorf.com)

[www.eppendorf.com/co2-incubators](http://www.eppendorf.com/co2-incubators)

BINDER® is a registered trademark of Binder GmbH, Germany. Panasonic® is a registered trademark of Panasonic Corp., Japan. PHCbi® is a registered trademark of PHC Holdings Co., Japan. Thermo Scientific® is a registered trademark of Thermo Fisher Scientific, USA. Eppendorf®, the Eppendorf Brand Design CellXpert®, and VisioNize® are registered trademarks of Eppendorf SE, Germany. All rights reserved, including graphics and images. Copyright © 2025 by Eppendorf SE.