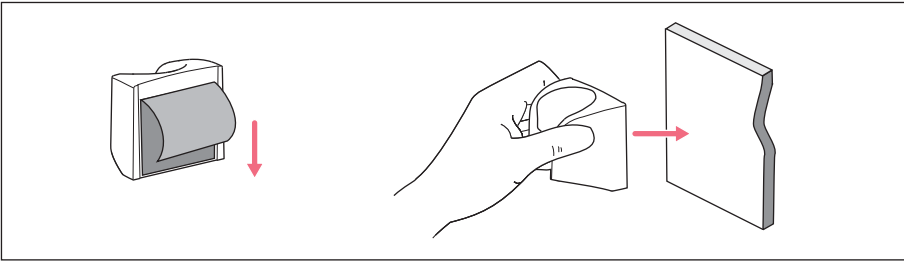


**Instructions for Use**  
 Easypet® 3  
 English (EN)

## 1 Wall mount for Easypet 3



## 2 Mounting the wall mount

1. Clean glass or ceramic surfaces (e.g., with ethanol) and allow them to dry.
2. Remove protective film and firmly press the wall mount against the cleaned surfaces. Objects may only be placed in the wall mount after 24 hours.

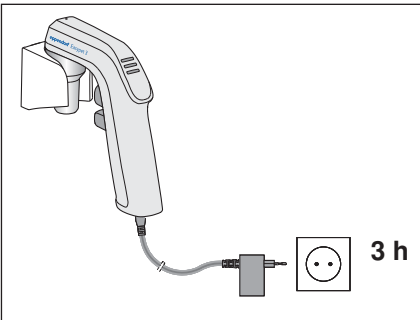
## 3 Cleaning the wall mount

- ▶ Use a damp cloth and mild cleaning agent to wipe off contamination.

## 4 Removing the wall mount

- ▶ Rotate the wall mount and remove adhesive tape.

## 5 Loading the rechargeable battery



- ▶ Mount the Easypet 3 in the wall mount and charge it using the mains/power supply device.

## 6 Materials

Wall mount	Material
Available surfaces	Polypropylene (PP)