



Unleash Your Potential

The Eppendorf epMotion® Series:
Discover our automated liquid handling solutions

Meet the New epMotion®!

We do not want you to work like a robot, so simply let our epMotion devices do the work for you. Automation liberates you by allowing you to concentrate on tasks that require not only your hands but first and foremost your brain.



Robust Hardware

- > epMotion systems are available in three sizes, all designed with minimal footprint
- > Self checkup to reduce startup time
- > High precision dispensing tools covering a volume range from 200 nL to 1,000 µL
- > Optical sensor verifies worktable setup before the run

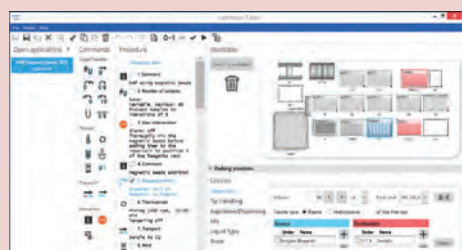


[Read more](#)

epBlue – Intuitive Software

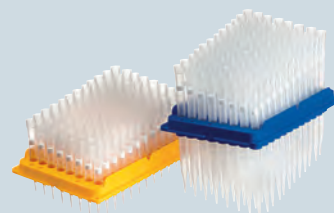
- > Enjoy the drag-and-drop-based programming
- > Learn to program and adjust methods in hours, not days
- > Optional software extensions for handling barcodes and supporting regulated environments compliant to e. g. 21 CFR part 11

[Read more](#)



epMotion Accessories, Consumables & Services

- > Get maximum flexibility with our portfolio of epMotion accessories
- > As an open platform epMotion supports a large variety of labware
- > High quality consumables guarantee high accuracy and reproducibility of your results
- > Choose our premium service to support and maintain your equipment operation



[Read more](#)

Let us focus on what really matters: Improving the world through science

This is why we get up every day, go to the lab and make new discoveries!
Let us take our time to create new experiments and analyze their results
instead of doing tedious routine pipetting work.



Works Hard, so You Can Work Smart

Before automation, researchers (like you) spent most of their working hours handling samples. That meant pipetting. A lot. Day after day.

Today is a new day. Use your valuable time for what really matters. Create experiments and evaluate results.

Replaces Your Hands, Not Your Brain

epMotion takes this (pain)work off your hands. It pipettes precisely and prevents you from developing fatigue-related injuries like Repetitive strain injury (RSI).

Never worry about sample quality again. epMotion is the friendly robot you can trust. It does its job reliably from the first to the last sample. Change the world, not your posture. Pipetting has never been this ergonomic.



Works like a Robot, so You Don't Have to

The epMotion has its limits. It cannot think like you. But it does not forget any pipetting steps. It processes small volumes that are barely visible to the human eye with precision.

Be strong. You cannot pipette like a robot. But you are smarter. Join forces with the epMotion to take the quality of experiments to a whole new level.

Operates Tirelessly Without Getting Tired

And there is something else the epMotion does not have to do. Sleep! It never gets tired. That is why it achieves a much higher throughput.

With your research, you are expanding the boundaries of humankind. It is more than OK to get tired. But please get tired because you have been able to do what is important to you. Work with joy.



Doesn't Want Your Job, Just Your Work

Let us talk about joy. epMotion loves your tried-and-tested protocols. It even likes to track every method step and provides a detailed protocol for you.

1000

Are you a fan of painstaking notation? Then this might be disappointing for you: The epMotion does all the documentation for you during its use. Do not be sad, take a break instead!

Flexible, Yet Intuitive!

Your sample journey is different from case to case. epMotion addresses your needs, giving you full flexibility and endless combination possibilities. In just a few clicks, you decide which consumables are used and whether shaking or heating is required.

Adjust sample numbers, pipetting volumes and incubation times quickly and intuitively before the start of every protocol. No programming skills required. Just exactly what you need: you are a natural scientist not a robotics engineer.

Eppendorf epMotion® Portfolio



epMotion® 96 Flex

Elevate your laboratory workflow with the epMotion 96 Flex, combining advanced technology with user-friendly design for unparalleled performance. Process 96- and 384-well plates with ease and enjoy flexibility with an exchangeable dispensing head design with a wide volume range. The user-friendly interface at the device's base ensures ergonomic operation even in laminar flow cabinets. The epMotion 96 Flex integrates seamlessly into your team's routines, amplifying their capabilities and providing a foundation for collaborative success.

Product Feature Highlights epMotion 96 Flex

- > Designed for simultaneous 96 channel pipetting for convenient processing of both 96-well and 384-well plates.
- > Exchangeable dispensing heads cover the entire volume range from 0.5 to 1000 µL. They can accommodate less than 96 tips for maximum flexibility.
- > Innovative user interface at the base of the device allows ergonomic use of the epMotion 96 Flex in laminar flow cabinets.
- > Dispensing heads calibrated according to ISO 23783-2 standards, that verifies high pipetting accuracy and precision ensuring reproducibility of your assays.



epMotion® 5070

Our smallest member of the epMotion family is the most compact solution for accurate and reproducible automated pipetting. This makes the epMotion 5070 a perfect match for any routine application such as PCR and qPCR setup, serial dilutions, reagent distribution, sample transfer from tubes to plates, and sample normalization.

Product Feature Highlights epMotion 5070

- > 4-position worktable
- > Volume range 0.2 to 1,000 µL (depending on used dispensing tools)
- > Automatic tool exchange for 2 tools
- > Small footprint of 65 × 48 cm fits small lab benches
- > MultiCon PC controller with simulation, network and software upgrade options
- > Intuitive drag-and-drop-based software

Available as PCR Solution bundle with dispensing tool and accessories.



epMotion® 5073

These automated pipetting systems are perfectly suited for PCR and qPCR setup, nucleic acid purification as well as low-throughput NGS library preparation. It yet retains the flexibility that allows the use as open platforms for diverse liquid handling tasks. The epMotion 5073 series automates and simplifies what are traditionally complex, labor-intensive pipetting tasks, saving time and improving the reproducibility of results.

Product Feature Highlights epMotion 5073

- > 6-position worktable
- > Volume range 0.2 to 1,000 µL (depending on used dispensing tools)
- > Automatic tool exchange for 3 tools
- > Option for gripper, one thermal module*¹ or Eppendorf ThermoMixer®*²
- > Optional UV lamp and air filter system for decontamination and clean air condition
- > MultiCon PC controller with simulation, network and software upgrade options
- > Intuitive drag-and-drop-based software

Available as NGS Solution bundle with specific software license, dispensing tools, accessories and consumables.

*¹ Available only with 5073i
 *² Already included 5073t



epMotion® 5075

The epMotion 5075 is the ideal solution for various liquid handling demands. It offers the same outstanding accuracy and precision as epMotion 5070 & 5073. The available options make the 5075 an excellent and most flexible device for applications such as NGS library preparation, PCR and qPCR setup, magnetic-bead-based and filter-based purification, cell-based assays or any routine pipetting tasks.

Product Feature Highlights epMotion 5075

- > Up to 15 worktable positions
- > Volume range 0.2 to 1,000 µL (depending on used dispensing tools)
- > Automatic tool exchange for 4 tools
- > Option for gripper, 1-3 thermal modules, Eppendorf ThermoMixer® and vacuum station
- > Optional UV lamp and air filter system for decontamination and clean air condition
- > MultiCon PC controller with simulation, network and software upgrade options
- > Intuitive drag-and-drop-based software

Available as NGS Solution bundle with specific software license, dispensing tools, accessories and consumables.

epMotion® 96 Flex



The epMotion 96 Flex is a semi-automated, 96-well multi-channel pipette for fast and precise parallel microplate processing. It is an easy to use bench top liquid handling system for high precision pipetting in 96 and 384 well plates. The exchangeable dispensing head design of the epMotion 96 Flex accommodates a very large volume range with only two dispensing heads and can handle less than 96 tips. This gives you full flexibility for your current and future applications.

Applications

- > Filling, replicating and reformatting of 96- and 384-well plates
- > Reagent and compound addition
- > (q)PCR setup in plate format
- > DNA/RNA extraction
- > Clean-up steps (e.g. for NGS)
- > Cell-based assays
- > Homogenous cell seeding (e.g. for cell-based assays)
- plate coating and washing (e.g. for ELISA)

- > Electronic pipetting with parallel piston movement for better precision and reproducibility of results
- > Calibrated according to ISO 23783-2
- > Device with exchangeable dispensing heads in volume range 0.5 to 300 µL and 5 to 1000 µL
- > Possibility to use two tip sizes per dispensing head to maximize accuracy and precision
- > Easy exchange of dispensing heads, no tools needed
- > Use tips column-wise (8, 16, 24, etc.) for serial dilutions and similar applications
- > Accuracy ≤ 4.5% at 5 µL
- > Precision ≤ 2.5% at 5 µL
- > Compact new design and smart operations for use in biosafety cabinets
- > Intuitive software on a high-quality 5" touch screen
- > Intelligent, preset applications aspiration, dilution, sequential dispense, multi dispensing, small volume, prewetting, and reverse pipetting



Please visit our website:
www.eppendorf.link/flex-up-your-team

Flex up Your Team



Optional: Remove tips or add tips from the reload rack (always work with full columns of tips).

1. **Insert the tips** into the TipHolder for epMotion® 96 Flex
2. **Place TipHolder for epMotion 96 Flex** on right position of 2-position slider, select »Load« in epMotion® 96 Flex software and follow further instructions.
3. **Select mode, e.g. »Pipette + Mix«**, and adjust plate on lifting table towards the tips
4. **Touch »Aspirate«** to take liquid from source plate, change to destination plate and touch »Dispense«
5. **Continue Pipetting** or eject tips by pressing »Eject«



epMotion® 5070



The epMotion 5070 is our most compact solution for accurate and reproducible automated pipetting. With four worktable positions and a small footprint the epMotion 5070 is a perfect match for any routine application such as PCR and qPCR setup, serial dilutions, reagent distribution, sample transfer from tubes to plates, and sample normalization.

Applications

- > PCR/qPCR setup
- > Tube to plate transfer
- > Plate reformatting
- > Serial dilutions
- > Cherry picking and Normalization
- > Sample and reagent transfers

- > 4 SLAS/ANSI deck positions
- > Volume range 0.2 to 1,000 µL (depending on used dispensing tools)
- > Automatic tool exchange for 2 tools
- > Compatible with micro- and PCR plates up to 384 wells
- > Compatible with tubes from 0.2 mL to 50 mL
- > Optical sensor for detecting liquids, labware, tips
- > Liquid level detection without conductive tips
- > Fully enclosed, compact housing
- > MultiCon PC controller with simulation, network and software upgrade options
- > Intuitive drag-and-drop-based software
- > Small footprint of 65 × 48 cm fits small lab benches
- > Available as PCR Solution bundle with dispensing tool and accessories



Please visit our website:
www.eppendorf.com/epMotion5070

epMotion® 5073I



Why spend valuable time on tedious liquid handling procedures when you can achieve fast, accurate and reproducible results with the **epMotion 5073I** automated liquid handler? Perfect for medium-throughput setup for PCR and qPCR, DNA/RNA normalization, cherry picking, dilution series and reformatting, the epMotion 5073I helps you perform pipetting tasks with ease and greater efficiency.

Applications

- > Assay setup
 - > Simple cell culture applications
 - > PCR/qPCR setup
 - > Tube to plate transfer
 - > Plate reformatting
 - > Serial dilutions
 - > Cherry picking and Normalization
 - > Sample and reagent transfers
 - > Sample mixing and tempering
- > 6 SLAS/ANSI deck positions,
 - > Volume range 0.2 to 1,000 μ L (depending on used dispensing tools)
 - > Automatic tool exchange for 3 tools and gripper
 - > Compatible with micro- and PCR plates up to 384 wells
 - > Compatible with tubes from 0.2 mL to 50 mL
 - > Optical sensor for detecting liquids, labware, tips
 - > Liquid level detection without conductive tips
 - > Fully enclosed, compact housing
 - > MultiCon PC controller with simulation, network and software upgrade options
 - > Intuitive drag-and-drop-based software
 - > Optional UV lamp and air filter system for decontamination and clean air conditions
 - > Optional thermal module for heating or cooling of samples or reagents
 - > Integrated LEDs for deck illumination and visual feedback of system status like idle, run in progress or run finished
 - > Optional software extensions for handling barcodes and supporting regulated environments compliant to e. g. 21 CFR part 11



epMotion® 5073t



The epMotion 5073t automated liquid handling system allows you to perform fast and efficient NGS library preparation of 1 to 24 samples. It is also ideally suited for automating more complex, time consuming liquid handling tasks such as DNA/RNA extraction. Save time and improve the reproducibility of your results with the epMotion 5073t!

Applications

- > DNA and RNA purification
- > NGS library preparation (low sample numbers)
- > PCR/qPCR setup
- > Tube to plate transfer
- > Plate reformatting
- > Serial dilutions
- > Cherry picking and Normalization
- > Sample and reagent transfers
- > Sample mixing and tempering

- > 6 SLAS/ANSI deck positions
- > Volume range 0.2 to 1,000 μ L (depending on used dispensing tools)
- > Automatic tool exchange for 3 tools and gripper
- > Compatible with micro- and PCR plates up to 384 wells
- > Compatible with tubes from 0.2 mL to 50 mL
- > Optical sensor for detecting liquids, labware, tips
- > Liquid level detection without conductive tips
- > Fully enclosed, compact housing
- > MultiCon PC controller with simulation, network and software upgrade options
- > Intuitive drag-and-drop-based software
- > Optional UV lamp and air filter system for decontamination and clean air conditions
- > Integrated Eppendorf ThermoMixer with 2D Mix-Control technology
- > Integrated LEDs for deck illumination and visual feedback of system status like idle, run in progress or run finished
- > Optional software extensions for handling barcodes and supporting regulated environments compliant to e. g. 21 CFR part 11
- > Available as NGS Solution bundle with specific software license, dispensing tools, accessories and consumables



Please visit our website:
www.eppendorf.com/epMotion5073t

epMotion® 5075I



Do not stress yourself by doing complex pipetting tasks when you can perform fast, accurate and reproducible liquid handling operations with the **epMotion 5075I** automated liquid handler. The epMotion 5075I offers 15 worktable positions and is well suited for high-throughput preparation of plates for PCR and qPCR, DNA/RNA normalization, cherry picking, dilution series, reformatting and immunoassays. Say goodbye to tedious pipetting steps!

Applications

- > Assay setup
- > Simple cell culture applications
- > PCR/qPCR setup
- > Tube to plate transfer
- > Plate reformatting
- > Serial dilutions
- > Cherry picking and Normalization
- > Sample and reagent transfers
- > Sample mixing and tempering

- > 15 SLAS/ANSI deck positions
- > Volume range 0.2 to 1,000 μ L (depending on used dispensing tools)
- > Automatic tool exchange for 4 tools and gripper
- > Compatible with micro- and PCR plates up to 384 wells
- > Compatible with tubes from 0.2 mL to 50 mL
- > Optical sensor for detecting liquids, labware, tips
- > Liquid level detection without conductive tips
- > Fully enclosed, compact housing
- > MultiCon PC controller with simulation, network and software upgrade options
- > Intuitive drag-and-drop-based software
- > Optional UV lamp and air filter system for decontamination and clean air conditions
- > Optional up to 3 thermal modules for heating or cooling of samples or reagents
- > Integrated LEDs for deck illumination and visual feedback of system status like idle, run in progress or run finished
- > Optional software extensions for handling barcodes and supporting regulated environments compliant to e. g. 21 CFR part 11



epMotion® 5075t



The epMotion 5075t automated liquid handling system allows you to perform high-throughput NGS library preparation using magnetic beads with speed and efficiency. It is also ideally suited for automating more complex, time consuming liquid handling tasks such as DNA/RNA extraction and ELISA. Save time and improve the reproducibility of your results with the epMotion 5075t!

Applications

- > DNA and RNA purification
- > NGS library preparation (medium to large sample numbers)
- > PCR/qPCR setup
- > Tube to plate transfer
- > Plate reformatting
- > Serial dilutions
- > Cherry picking and Normalization
- > Sample and reagent transfers
- > Sample mixing and tempering

- > 14.5 SLAS/ANSI deck positions
- > Volume range 0.2 to 1,000 μ L (depending on used dispensing tools)
- > Automatic tool exchange for 4 tools and gripper
- > Compatible with micro- and PCR plates up to 384 wells
- > Compatible with tubes from 0.2 mL to 50 mL
- > Optical sensor for detecting liquids, labware, tips
- > Liquid level detection without conductive tips
- > Fully enclosed, compact housing
- > MultiCon PC controller with simulation, network and software upgrade options
- > Intuitive drag-and-drop-based software
- > Optional UV lamp and air filter system for decontamination and clean air conditions
- > Integrated Eppendorf ThermoMixer with ^{2D}Mix-Control technology
- > Optional up to 2 thermal modules for heating or cooling of samples or reagents
- > Integrated LEDs for deck illumination and visual feedback of system status like idle, run in progress or run finished
- > Optional software extensions for handling barcodes and supporting regulated environments compliant to e. g. 21 CFR part 11
- > Available as NGS Solution bundle with specific software license, dispensing tools, accessories and consumables



Please visit our website:
www.eppendorf.com/epMotion5075t

epMotion® 5075v



Complex applications, such as nucleic acid purification or solid phase extraction, should not tie you to the workbench. With integrated vacuum filtration and a combined mixing and temperature module (only for 5075vt) in one system, the **epMotion 5075v** and **epMotion 5075vt** allow true walk-away automation of complex purification or extraction protocols. Increase your lab productivity and free up time for other tasks!

Applications

- > DNA and RNA purification
- > Solid phase extraction
- > PCR/qPCR setup
- > Tube to plate transfer
- > Plate reformatting
- > Serial dilutions
- > Cherry picking and Normalization
- > Sample and reagent transfers
- > Sample mixing and tempering

- > 12 SLAS/ANSI deck positions
- > Volume range 0.2 to 1,000 µL (depending on used dispensing tools)
- > Automatic tool exchange for 4 tools and gripper
- > Compatible with micro- and PCR plates up to 384 wells
- > Compatible with tubes from 0.2 mL to 50 mL
- > Optical sensor for detecting liquids, labware, tips
- > Liquid level detection without conductive tips
- > Fully enclosed, compact housing
- > MultiCon PC controller with simulation, network and software upgrade options
- > Intuitive drag-and-drop-based software
- > Integrated vacuum pump – silent operation, no tubing, wiring, and reservoirs to maintain
- > Integrated Eppendorf ThermoMixer with ^{2D}Mix-Control technology (only 5075vt)
- > Optional UV lamp and air filter system for decontamination and clean air conditions
- > Optional up to three thermal modules for heating or cooling of samples or reagents
- > Integrated LEDs for deck illumination and visual feedback of system status like idle, run in progress or run finished
- > Optional software extensions for handling barcodes and supporting regulated environments compliant to e. g. 21 CFR part 11



epMotion 5075

Status display

LED bar to easily identify your system's current status.

Optical sensor

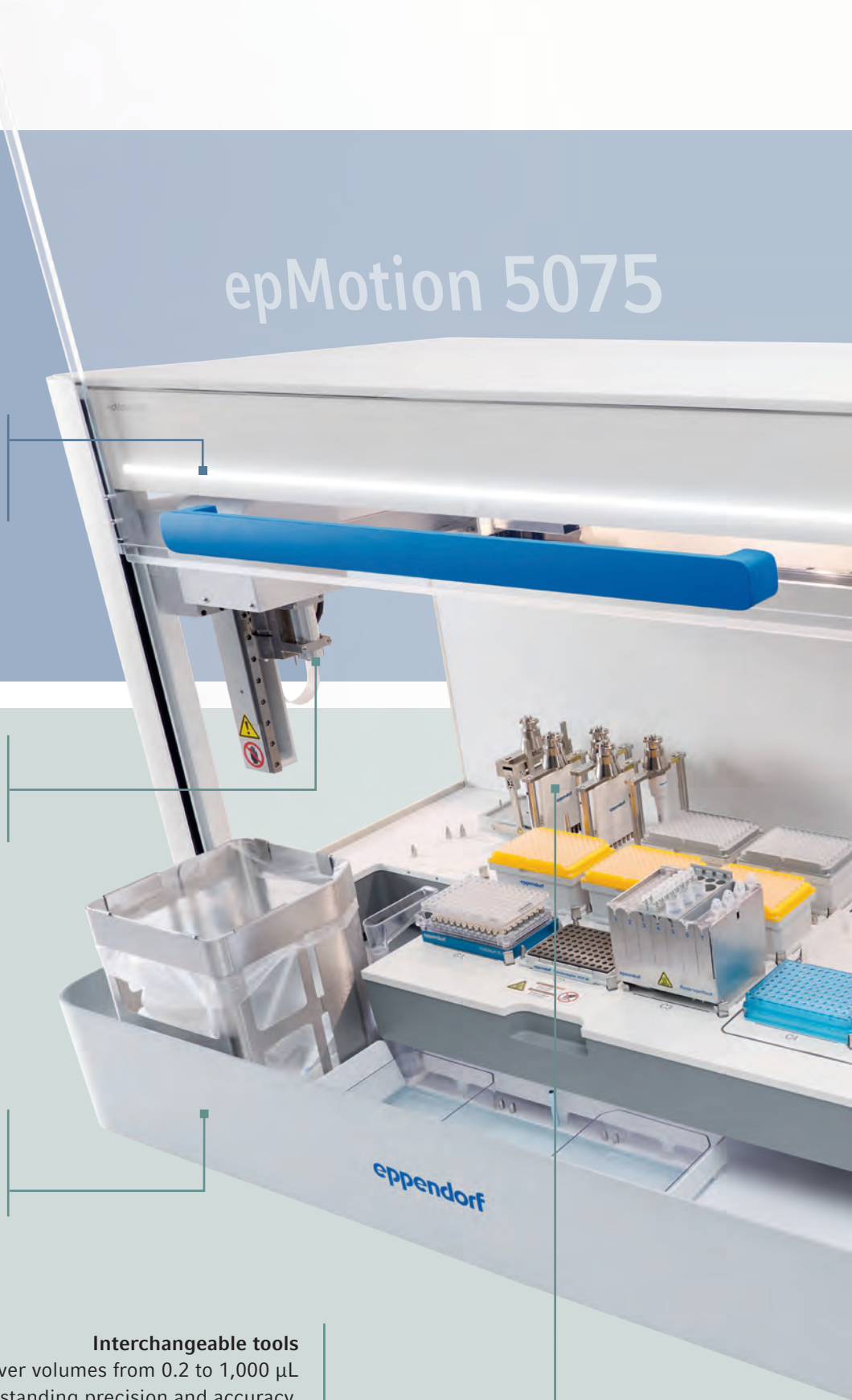
for touch free detection of tips, labware and even liquid levels

Drawer

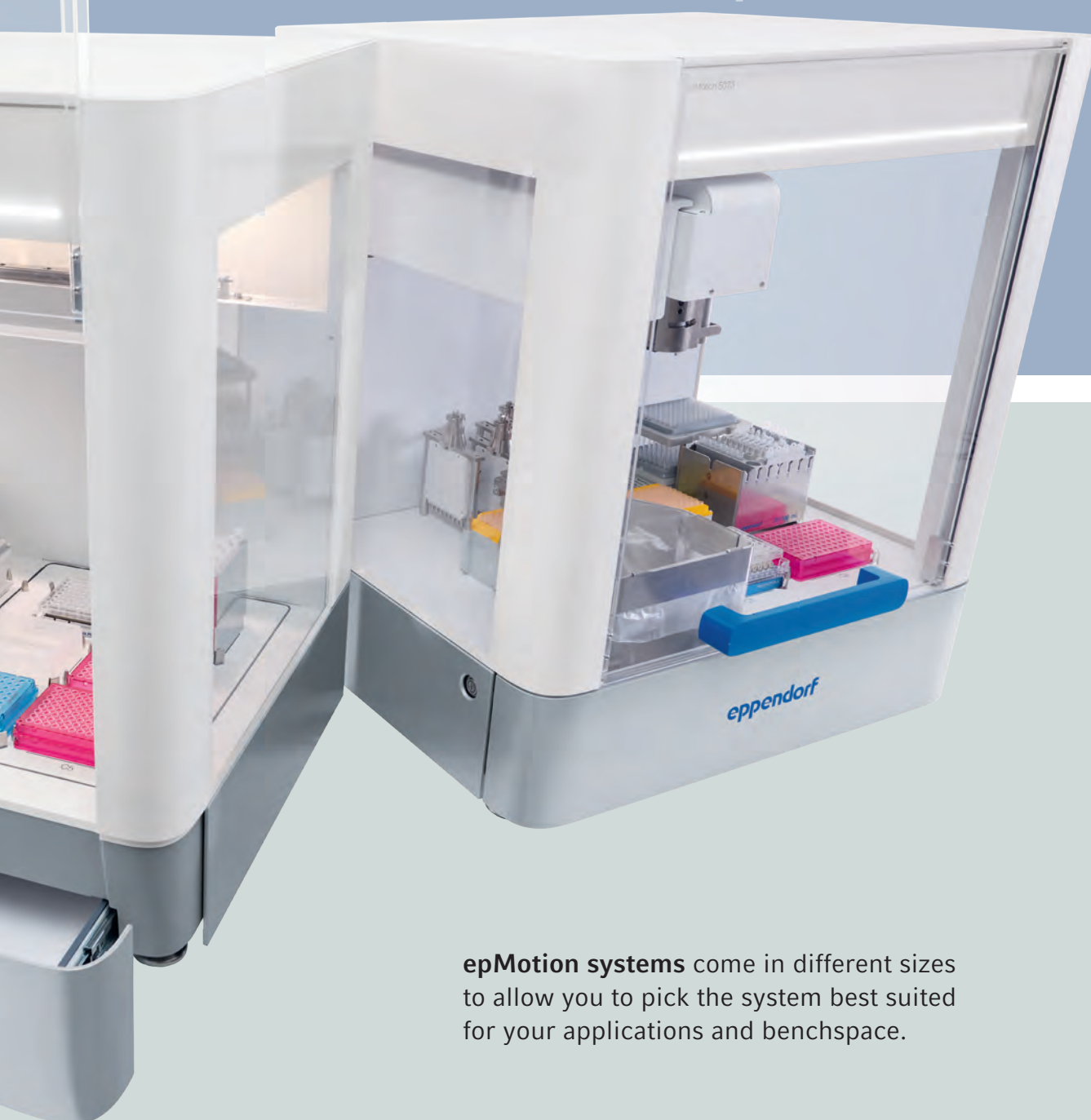
Can be opened to easily handle solid and liquid waste and provide extra storage space.

Interchangeable tools

to cover volumes from 0.2 to 1,000 μL with outstanding precision and accuracy. Just swap out tools to equip your epMotion for new tasks, no service visit needed.



epMotion 5073



epMotion systems come in different sizes to allow you to pick the system best suited for your applications and benchspace.



epMotion® 5070/5073/5075

Feature Overview



Optical Sensor

Checks worktable loading for tips (type and number), labware type, and even liquid levels in vessels for safe operation.



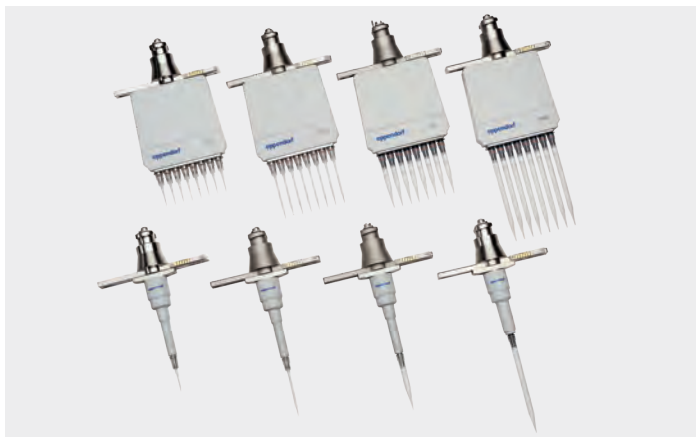
Solid and Liquid Waste System

Extended waste capacity for solid and liquid waste. Easy and safe handling and emptying of both types of waste.



Clean Cap

with UV light for decontamination and air filter system for clean air inside. Optional for epMotion 5073 and 5075 versions.



Dispensing Tools

8 autoclavable dispensing tools from 200 nL to 1,000 µL are available for programming; single- or multi-channel; all calibrated for utmost precision.



Gripper Tool

Allows transport and stacking of labware on worktable of 5073 or 5075 versions.

Accurate Pipetting Performance

Achieve highest pipetting precision and accuracy with free-jet or contact dispensing using the Eppendorf air-cushion pipetting technology together with dedicated epT.I.P.S. Motion in a volume range from 0.2 to 1,000 μ L. While free-jet pipetting minimizes cross contamination, contact pipetting can be used for better precision of very small volumes.

Use Your Favorite Labware

Take advantage of our growing database of over 1,200 labware files, which supports the labware you are already using. Our database includes a range of single tubes, from 0.2 mL PCR tubes to 50 mL conical tubes, as well as plates from 6 to 384 well format. Additionally, we offer a selection of adapters, including cooling and heating options, for microplates and deepwell plates from various suppliers.



Eppendorf ThermoMixer®

Fully integrated Eppendorf ThermoMixer with ^{2D}Mix-Control improves yield and application performance, e.g. for resuspending bacteria pellets or magnetic beads. Peltier element allows heating and cooling of sample and/or reagents.



Integrated Vacuum Station

Loaded and unloaded with the gripper, the vacuum station adapts automatically to different filter plate types. Silent operation of internal pump with no need for extra tubes, wiring or reservoir maintenance.



Status Display and Deck Illumination

LED status light bar for visual feedback of the system status and separate LED light for worktable illumination for epMotion 5073 and 5075.



Automatic Tool Exchange

Choose the tools you need for your application from 8 dispensing tools and a gripper. Dependent on the epMotion version, 2 to 4 dispensing tools can be provided on the worktable for automatic exchange.



Small Footprint – Large Deck

With 4, 6, 12 or up to 15 positions in SLAS/ANSI format the epMotion family gives you all the flexibility you need for your application.

Easy & Fast Access

Control epMotion by touch or mouse for quick and easy method setup. Fast initialization of the instrument let you start right away without manual teaching or calibration of robotic system.

Housing

Completely contained housing including door safety mechanism.

Thermal module

Option for heating or cooling of samples and reagents (0–110 °C)

NGS Made Easy

NGS sample preparation is a labor-intensive process. With its precision pipetting capabilities, the epMotion reduces the hands-on time and generates high-quality NGS libraries. Eppendorf offers pre-optimized and manufacturer-qualified NGS reagent kit methods, allowing for minimal user

intervention and setup time, even for runs with low sample numbers. The system's ease of use is further enhanced by Eppendorf's expert applications support and service, ensuring successful automation of a variety of kits.



For consistent high-quality results, each workflow requires careful optimization, customization, and thorough training. To make the process even smoother, Eppendorf provides in-lab applications implementation services, making it quick and simple to add new methods to the epMotion. With this level of support, the epMotion eliminates the risk of pipetting errors, provides reproducible results, and increases overall productivity.

In addition, the epMotion NGS solutions offer users the choice for a complete solution for processing up to 24 or up to 96 samples without user-intervention, freeing up time for other tasks. The sequencing results obtained through epMotion automation are comparable to or even better than those obtained through manual preparation, making the epMotion a trustworthy solution for automating NGS library preparation.



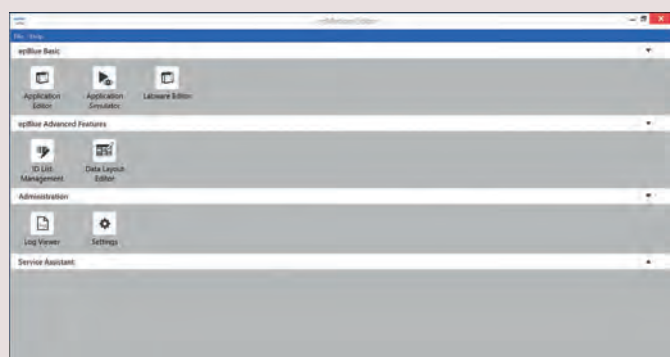
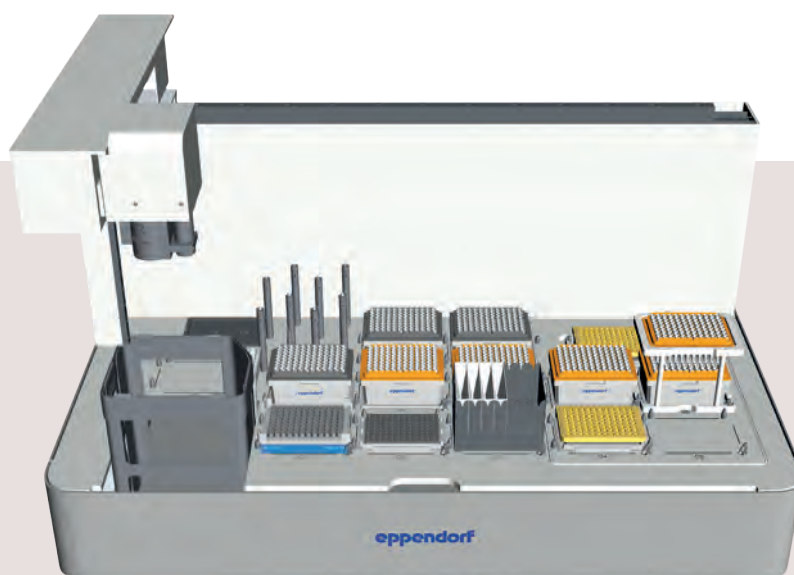
Please visit our website:
www.eppendorf.com/epmotionmethods/

epMotion® Software – Simplify Your Programming

Versatile Software Gives You Control

The epBlue software features an intuitive interface that allows for fast mastery and rapid method design while maintaining versatility and usability. The easy to use drag-and-drop visual interface makes setting up new methods fast and simple. A variety of smart commands are available each with its own set of preset parameters that the user can modify to fit particular needs. Comments give the option to leave notes when multiple users work on the same protocol. Features such as the ability to reuse tips and a multidispense mode minimize tip consumption leading to reduced costs per sample can be activated with a few clicks. The optional barcode reading tool allows for easy tracking of samples throughout your whole process.

- > Intuitive drag-and-drop programming for easy method setup
- > Copy/Cut and paste feature allows for fast method modification and adaptation
- > 3D view of workstation and run simulation for easier method optimization
- > Create, edit and simulate methods on any Windows 10 PC with epMotion Editor software
- > User management with different user levels enables structured use in a shared environment
- > The ability to leave comments makes it easy to collaborate on methods
- > Surface teaching allows for the user to identify the bottom tolerance of labware
- > Unlimited virtual deck positions increases the versatility of the system
- > Add Enhanced Feature Set 1 and 2 for even more features



Upgrades for the Features You Need

epBlue GxP – Software

The epBlue GxP software was developed to support organizations in validated regulated environments. The epBlue GxP software is designed to the properties required for processes compliant to the requirements of e.g. 21 CFR part 11 containing the following functionalities:

- > Electronic records and signatures
- > User level management and access control
- > Audit trail and log file
- > Revision management
- > Export and archiving of digitally signed documents
- > epBlue ID tracking using bar codes (optional extension)

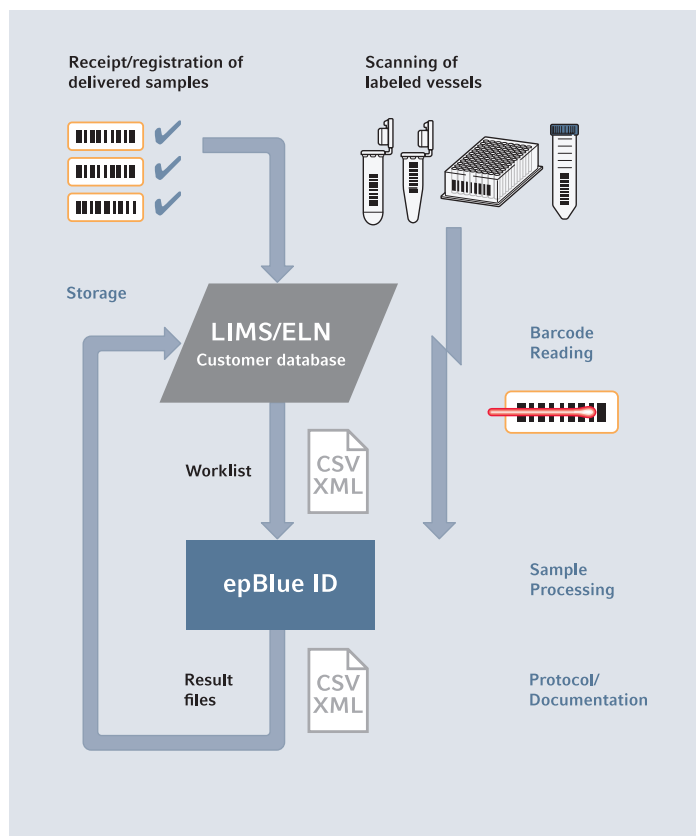
In addition to the epBlue GxP software, GxP IQ and GxP OQ services are available for all epMotion models considering the currently valid regulations and standards to support customer needs in terms of compliance.

epBlue ID – Secure barcode

scanning-tracking-documentation

epBlue ID software module allows for safe data exchange with laboratory information management systems (LIMS) and simplifies external communication. The barcode scanner enables the user to record barcodes on all tube types and microplates. Reagents can be documented with type and lot number. After manually scanning the barcodes, epBlue ID will store the IDs in its database from which data can be verified at any time. A result file containing sample IDs and their final location is generated by epBlue ID when the liquid handling process is completed. The result ID list can then be exported to a network drive and uploaded to a LIMS.

- > Visual guidance of the scanning process
- > Documentation of reagent type and batch
- > Compatible with LIMS generated worklists



Please visit our website:
www.eppendorf.com/epBlue

Control at Your Fingertips

The Eppendorf MultiCon PC versions define a new dimension in ease-of-use and safety. As premium product, the industrial PC ensures maximum reliability by standardization and has undergone multiple quality checks before delivery. The MultiCon controller fulfills the high expectations for best performance for the epMotion.



- > Large touch screen and mouse and keyboard control
- > Network interface allows the remote control of epMotion via direct Ethernet connection
- > Pre-installed epBlue software
- > CSV and XML file exchange via USB or LAN
- > Safe operation due to data-base repository
- > 5 USB & 1 Ethernet ports
- > Optional software extensions for handling barcodes and supporting regulated environments compliant to e.g. 21 CFR part 11

Accuracy and Reproducibility Delivered

epMotion dispensing tools

Based on Eppendorf air cushion pipetting technology

- > Free-jet pipetting, no tubes, no wires, no air bubbles to minimize cross-contamination
- > Use contact pipetting for small volumes, from 1 μL down to 200 nL
- > Excellent pipetting precision, below 2 % CV at 1 μL *
- > Volume range: 0.2–10 μL ; 1–50 μL ; 20–300 μL and 40–1,000 μL
- > Single or 8-channel
- > Autoclavable & easy to maintain
- > Automatic notification when calibration is due

* Eppendorf application note 168:
»Evaluation of the Eppendorf epMotion® Pipetting Tools using the Artel MVS®.«



epT.I.P.S.® Motion

Special tips for use in automated systems. Each tip is inspected for straightness prior to packaging. This ensures a perfect handling of 96- and 384-well micro- and PCR plates

- > Color-coded tray for easy volume identification
- > Non-carbonized, pure virgin polypropylene, both tip and box are recyclable
- > Standard, filter, and sterile tips available
- > PCR clean quality grade for filter tips
- > Also available as eco-friendly reload system (ACT certified)

Re-use tips feature

The new epMotion systems can re-use tips as e.g. economical choice for multiple wash steps of the same well. Here special epT.I.P.S. Motion SafeRack tips are recommended

- > Individual compartments to avoid cross-contamination between used tips
- > Available as standard and PCR clean quality





Services for epMotion® – Keep Your Process in Motion

It's all about accuracy and reliability

The epMotion and its dispensing tools and dispensing heads are precision instruments. As such, they require regular maintenance, which help prevent failures and keep your processes moving forward. Regular calibration of the dispensing tools/heads will ensure system accuracy, precision and reliability.

Our Service and Extended Warranty Agreement options will allow you to maintain premium functioning of your epMotion over the full lifetime of the system. Highly-skilled Eppendorf service technicians perform the adjustments and repairs to return your system to manufacturer specifications.

Services include:

- > Cleaning, inspection and system maintenance
- > Eppendorf quality spare parts
- > Software update as needed
- > Instrument adjustments as needed
- > Functional tests with service diagnostic methods
- > Calibration of dispensing tools and dispensing heads
- > Calibration of level sensor, carrier arm, thermal module and vacuum manifold
- > Operational Qualification certification
- > Full documentation
- > 1 year extended warranty

| epMotion® | 96 Flex | 5070 | 5073 | 5075 |
|------------------------|--------------|--------------|--------------|--------------|
| Installation | 0082 030 171 | 0082 030 081 | 0082 030 111 | 0082 030 141 |
| PremiumCare | 0082 030 183 | 0082 030 107 | 0082 030 108 | 0082 030 075 |
| AdvancedCare | 0082 030 182 | 0082 030 105 | 0082 030 106 | 0082 030 073 |
| Extended Warranty | 0082 030 180 | 0082 030 100 | 0082 030 101 | 0082 030 069 |
| Extended Warranty plus | 0082 030 181 | 0082 030 102 | 0082 030 103 | 0082 030 071 |
| Preventive Maintenance | 0082 030 177 | 0082 030 010 | 0082 030 011 | 0082 030 012 |
| IQ/OQ GxP | 0082 030 178 | 0082 030 030 | 0082 030 031 | 0082 030 032 |
| OQ GxP | 0082 030 179 | 0082 030 040 | 0082 030 041 | 0082 030 042 |
| Intro user training | 0082 030 185 | 0082 030 095 | 0082 030 125 | 0082 030 155 |

| Application Implementation | Calibrations |
|----------------------------|--------------|
| Level 1 | 0082 030 160 |
| Level 2 | 0082 030 161 |
| Level 3 | 0082 030 162 |
| Level 4 | 0082 030 163 |

| | |
|--|--------------|
| epMotion® 1-ch. Tool Calib. (10 M/test vol) | 0050 600 255 |
| epMotion® 8-ch. Tool Calib. (10 M/test vol) | 0050 600 259 |
| epMotion® 1-ch. Tool Calib. (4 M/test vol) | 0082 030 077 |
| epMotion® 8-ch. Tool Calib. (4 M/test vol) | 0082 030 078 |
| ISO23783 epMotion 96 Flex DispHead Calib (10 M + photometric test) | 0082 030 052 |

For more detailed information on our service portfolio (incl. services for 1st generation of epMotion® 96), please download our Services brochure [here](#).



Further information:
www.eppendorf.com/service

For local offers please visit our local websites.
Services may vary according to country.
Contact your local Eppendorf Service organization.



All Your Favourite Labware – epMotion® Accessories

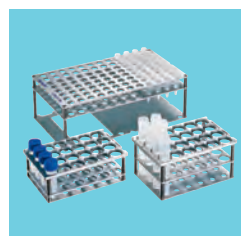
Whether 0.2 mL PCR tubes, 1.5, 2 or 5 mL test tubes, 15 or 50 mL conical tubes, six-well plates, 96/384-well microplates,

PCR plates, or deep-well plates – with epMotion accessories, you can handle it.



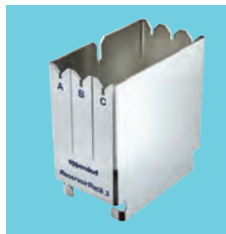
ReservoirRack

Enables positioning of up to 7 reagent rack modules or reservoirs with 10 mL, 30 mL and 100 mL filling volume.



Racks for single test tubes

For micro test tubes, glass, or plastic tubes. Fifteen different formats available.



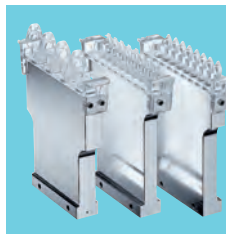
ReservoirRack 3

Small rack for epMotion 5075t for 3 reagent rack modules or reservoirs with 10 mL, 30 mL or 100 mL filling volume.



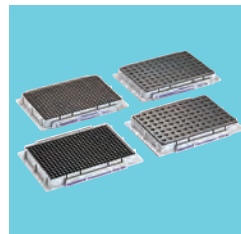
Thermoracks for 24 × Safelock 0.5/1.5/2 mL tubes

Temperature-controlled when used with a thermal module. Available also for Cryotubes and as version for Eppendorf ThermoMixer®.



ReservoirRack modules TC

10 module sizes are available to use tubes from 0.2 mL PCR, 5 mL to 50 mL tubes. Temperature-controlled when used with a thermal module.



Thermoracks and adapters

For use with 96-well or 384-well plates and single 0.2 mL tubes. Thermoracks can be transported with gripper. On Thermo adapters plates can be exchanged by the gripper.



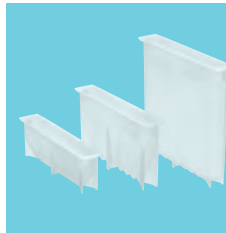
ReservoirRack Module TC 5.0 mL

For 4 × Eppendorf Tubes® 5.0 mL. Up to 3 modules can be placed in ReservoirRack, temperature control possible.



Thermoadapter DWP 96

For heating or cooling of 1 mL deep-well plates. Plates can be exchanged by the gripper.



10 mL, 30 mL and 100 mL reagent reservoirs

The reagent reservoirs are PCR clean, autoclavable, and can be placed in the ReservoirRack. Both can be temperature controlled with special ReservoirRack module.



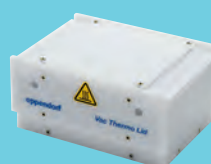
Eppendorf Magnum FLX® Magnet Adapter

universal ring magnet plate for rapid magnetic bead separation. Supports most 96-well plates (standard, PCR, deepwell).



Height adapter

Three height adapters enable exact height level adjustment and accelerated processing of microplates.



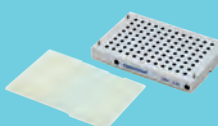
Vac Thermo lid

Use with Vacuum station to apply heated air to samples for improved drying.



Gripper

For transport of plates, thermoblocks and other labware on worktable of epMotion 5073 & 5075.



Vacuum lid

For use with Vacuum station to apply vacuum to a reduced number of samples. Grippable and special sealing mats for lid available.



TipHolder 73

enables positioning epT.I.P.S.Motion Reload trays above a rack of epT.I.P.S. Motion and thus doubles the tip capacity on a deck position.



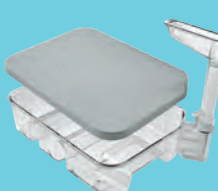
Reservoir 400 mL

Large-volume container in SLAS/ANSI format as e.g. liquid waste collection vessel for vacuum applications on the epMotion, autoclavable.



TipHolder

Autoclavable, aluminum Tipholder for tip tray of reload system, reduces waste by up to 40 percent.



Liquid Waste System

System for easy and safe handling of liquid waste.



Reservoir Rack Module NGS

for use with epMotion ReservoirRacks, for distributing samples and reagents for NGS-specific applications, space for 20 x ILMN tubes, 4 x Eppendorf Tubes® 5.0, 4 x Eppendorf Tubes 1.5 mL.



Reservoir Rack Module PCR

for use with epMotion ReservoirRacks, for distributing samples and reagents for PCR, space for 48 x PCR tubes 0.2 mL, 12 x Eppendorf Tubes 1.5/2.0 mL and 1 x tube 5.0 mL.

Technical Specifications

| Dimensions of device | | 5070 | 5073 | 5075 |
|----------------------|---------|---------------|-----------------|------------------|
| | Width*1 | 25.6 in/65 cm | 26.8 in/68.0 cm | 42.5 in/108.0 cm |
| | Depth | 18.9 in/48 cm | 24.5 in/62.3 cm | 24.5 in/62.3 cm |
| | Height | 24.8 in/63 cm | 32.0 in/81.2 cm | 32.0 in/81.2 cm |

*1 Total width needed on bench with MultiCon and Keyboard add 19.6 in/50 cm

Weight (without packaging and accessories)

| | | | | | |
|-----------------------------|--------|----------|-----------------|--------|----------|
| 5070 | 45 kg | 99.2 lb | 5075l | 122 kg | 269.0 lb |
| 5073l | 86 kg | 189.6 lb | 5075t | 124 kg | 273.4 lb |
| 5073t | 93 kg | 205.0 lb | 5075v | 123 kg | 271.2 lb |
| CleanCap (5073) | 4.5 kg | 9.9 lb | 5075vt | 128 kg | 282.2 lb |
| Thermal Module (5073, 5075) | 3.1 kg | 6.7 lb | CleanCap (5075) | 6.3 kg | 13.9 lb |

| Power supply | 5070 | 5073 | 5075 |
|--------------|-----------------|-----------------|-----------------|
| Voltage | 100–240 V ±10 % | 100–240 V ±10 % | 100–240 V ±10 % |
| Frequency | 50–60 Hz ±5 % | 50–60 Hz ±5 % | 50–60 Hz ±5 % |
| Standby | 50 W | 50 W | 50 W |
| Max output | 200 W | 600 W | 700 W |

Pipetting performance specifications measured based on ISO 8655-6

| Single-channel tool | Volume | Systematic measurement error | Random measurement error |
|---------------------|-----------|------------------------------|--------------------------|
| TS 10 | 10 µL | ± 1.2 % | ± 0.25 % |
| | 1 µL | ± 5.0 % | ± 3.0 % |
| | 200 nL *2 | ± 25 % | ± 19.8 % |
| TS 50 | 50 µL | ± 1.0 % | ± 0.4 % |
| | 1 µL | ± 15 % | ± 5 % |
| TS 300 | 300 µL | ± 0.6 % | ± 0.3 % |
| | 20 µL | ± 4 % | ± 2.5 % |
| TS 1000 | 1,000 µL | ± 0.7 % | ± 0.15 % |
| | 40 µL | ± 5 % | ± 1.5 % |

in pipetting mode, free jet

*2 in pipetting mode, contact, typical pipetting performance

Typical pipetting performance determined using the Artel® MVS® (Multichannel verification system)*3

| Single-channel tool | Volume | systematic measurement error | random measurement error |
|---------------------|--------|------------------------------|--------------------------|
| TS 10*4 | 10 µL | ± 0.37 % | ± 0.27 % |
| | 1 µL | ± 1.13 % | ± 0.64 % |
| | 200 nL | ± 8.16 % | ± 1.76 % |
| TS 50 | 50 µL | ± 0.64 % | ± 0.20 % |
| | 1 µL | ± 5.43 % | ± 1.58 % |
| TS 300 | 300 µL | ± 0.70 % | ± 0.13 % |
| | 20 µL | ± 0.85 % | ± 0.20 % |
| TS 1000 | 200 µL | ± 1.35 % | ± 0.10 % |
| | 40 µL | ± 0.82 % | ± 0.23 % |

*3 Eppendorf Application Note 168: »Evaluation of the Eppendorf epMotion® Pipetting Tools using the Artel MVS®«

*4 Eppendorf Application Note 399: »Evaluation of the Eppendorf epMotion® 10 µL Pipetting Tools Using the Artel® MVS®«

| Conductor | Systematic measurement error | Random measurement error |
|------------------------------------|---|--------------------------|
| X, Y, Z Positioning: | ± 0.3 mm | ± 0.1 mm |
| Detector | | |
| Optical confocal infrared detector | contact-free detection of liquid levels, tools used, labware worktables, tip types and quantities | |
| Optical sensor | liquid surface must be 90 ±3° to the vertical plane of the optical sensor | |
| Gripper | | |
| Carrying capacity | 1,200 g | |
| Vacuum unit | | |
| Max output | 35 NI/min | |
| Suction range | 0.1–85 kPa | |
| Suction time | 1 sec to 36 min | |
| Eppendorf ThermoMixer® | | |
| Mixing frequency | Off, 300–2,000 rpm, optimized for labware and application | |
| Mixing amplitude | 3 mm | |
| Temperature range | –15 °C below RT to 95 °C measured in labware at 75 % filling height | |
| Temperature homogeneity | ≤ 10 % on the block | |
| Heating rate | 5 °C/min, on the block | |
| Cooling rate | 3 °C/min, on the block, above RT | |
| Setting range time | 5 sec–120 min | |
| Optional thermal module | | |
| Setting range time | 1 min–120 min | |
| Setting range temperature | 0 °C–110 °C (32°F–230°F) | |
| CleanCap | | |
| Air filter | 70–80 m³/h (5073); 70–120 m³/h (5075); class E10 | |
| UV light | 254 nm (UV-C) | |
| UV lamp power 1m distance | 39 µW/cm² | |

| | | |
|-------------------------------|--|--|
| MultiCon (15" Display) | | |
| Processor | Intel® Core™ i5-8500T Processor (with Intel vPro®) | |
| Graphics | Intel UHD Graphics 630 | |
| Memory (RAM) | 8 GB 2400 MHz DDR4 SO-DIMM | |
| Storage | 128 GB M.2 SATA SSD | |
| Chipset | Intel Q370 Express | |
| Display | 15.6" diagonal, active matrix TFT LED LCD | |
| USB Ports | > 3 × USB 3.0 (1 on display head, 2 on I/O) > 2 × USB 2.0 (on I/O) | |
| Serial Ports | 2 × RJ45 | |
| Ethernet Port | 1 × LAN RJ45 (Gigabit) | |
| Wireless | 802.11 a/b/g/n/ac | |
| Operating system | Windows® 10 IoT Enterprise LTSC 64-bit | |
| Power Supply | > AC input voltage: 100–240 VAC > Input frequency: 50–60 Hz > Maximum output power: 180 W | |
| Power consumption | 76 W | |
| Dimensions | 386 mm × 369 mm × 221 mm | |
| Weight | 4.9 kg (unpackaged) | |
| Accessories: | NA Power Cord, EU Power Cord, Power Adapter – 180 W, Cable RJ-45 to DB-9, Cable cover locking screw, QIG | |

Ordering Information

| Description | International Ordering no. | North America Ordering no. |
|---|-------------------------------|-------------------------------|
| epMotion® 96 Flex | | |
| epMotion® 96 Flex Base Device with 2-positions slider. base device without dispensing head with TipHolder for epMotion® 96 Flex for use of epT.I.P.S. Motion Reloads, 100 - 240 V, 50 - 60 Hz | 5069 000 519 | 5069 000 004 |
| Dispensing Head 96-channel 0.5-300 µL in hard shell case for epMotion® 96 Flex | 5069 000 527 | 5069 000 101 |
| Dispensing Head 96-channel 5-1000 µL in hard shell case for epMotion® 96 Flex | 5069 000 535 | 5069 000 209 |
| TipHolder for epMotion® 96 Flex for use with epT.I.P.S Motion Reloads | 5069 075 004 | 5069 000 306 |
| epMotion® 5070 | | |
| epMotion® 5070 MultiCon , completely contained housing, system incl. Eppendorf MultiCon, epBlue software, keyboard, mouse, waste box, 100–240 V ±10 %/50–60 Hz ±5 % | 5070 000 282 | 5070 007 011 |
| epMotion® 5070 MultiCon PCR Solution , includes MultiCon PC, dispensing tool (TS 50), PCR specific accessories, 100–240 V ±10 %/50–60 Hz ±5 % | 5070 000 948 | |
| epMotion® 5073 | | |
| epMotion® 5073l , MultiCon PC, completely contained housing, epBlue software, keyboard, mouse, system for solid and liquid waste, 100–240 V/50–60 Hz | 5073 000 110 | |
| epMotion® 5073t , MultiCon PC, completely contained housing, ThermoMixer, epBlue software, keyboard, mouse, system for solid and liquid waste, 100–240 V/50–60 Hz | 5073 000 111 | |
| epMotion® 5073t NGS Solution , MultiCon PC, ThermoMixer, 3 dispensing tools, gripper, NGS specific accessories and consumables, epBlue software with Enhanced Feature Set 1, system for solid and liquid waste, 100–240 V/50–60 Hz | 5073 000 112 | |
| epMotion® 5075 | | |
| epMotion® 5075l , MultiCon PC, completely contained housing, epBlue software, keyboard, mouse, system for solid and liquid waste, 100–240 V/50–60 Hz | 5075 000 041 | |
| epMotion® 5075t , MultiCon PC, completely contained housing, ThermoMixer, epBlue software, keyboard, mouse, system for solid and liquid waste, 100–240 V/50–60 Hz | 5075 000 042 | |
| epMotion® 5075v , MultiCon PC, completely contained housing, vacuum system with accessories, gripper, epBlue software, keyboard, mouse, system for solid and liquid waste, 100–240 V/50–60 Hz | 5075 000 043 | |
| epMotion® 5075vt , MultiCon PC, completely contained housing, vacuum system with accessories, gripper, ThermoMixer, epBlue software, keyboard, mouse, system for solid and liquid waste, 100–240 V/50–60 Hz | 5075 000 044 | |
| epMotion® 5075t NGS Solution , MultiCon PC, ThermoMixer, thermal module, 4 dispensing tools, gripper, NGS specific accessories and consumables, epBlue software with Enhanced Feature Set 1, system for solid and liquid waste, 100–240 V/50–60 Hz | 5075 000 045 | |
| Power supply cables | | |
| EU Power Cord , with EU-plug and C13 coupling, 2.5 m | 0013 563 934 | |
| US Power Cord , with US-plug and C13 coupling, 2.5 m | 0013 563 942 | 022377183 |
| UK Power Cord , with UK-plug and C13 coupling, 2.5 m | 0013 594 490 | |
| China Power Cord , with China-plug and C13 coupling, 2.5 m | 0013 613 952 | |
| Australia Power Cord , with Australia-plug and C13 coupling, 2.5 m | 0013 592 454 | |
| Argentina Power Cord , with Argentina-plug and C13 coupling, 2.5 m | 0013 613 973 | |
| Software and upgrade options | | |
| Enhanced Feature Set 1 , license for epBlue features: flexible number of samples, intelligent selection 1- or 8-channel tool, start methods at any step, e-mail notifications, requires service visit and epBlue >40.6 | 5075 000 964 | |
| Enhanced Feature Set 2 , license for epBlue feature: Normalization, requires service visit and epBlue 40.8 or higher | 5075 000 981 | |
| epBlue ID software and hardware upgrade set , for MultiCon versions (epMotion® SN > 4,000), barcode support include software, barcode reader and stand, not compatible with epMotion® panel or EasyCon versions | 5075 002 701 | |
| Thermal Module Upgrade Set , retrofitting of one thermal module for heating or cooling (0–110 °C) of plates, thermoadapters, thermoblocks and thermoracks | 5075 757 508 | |
| Device Hardware Upgrades and Software , Upgrade set to MultiCon, changes existing epMotion® EasyCon to PC controller. Includes PC, keyboard, mouse, epBlue SW, PCR & Prep assistant, cables | 5075 000 725 | |
| CleanCap Upgrade Set for epMotion® 5073 , includes UV lamp and air filter system for decontamination and pipetting under clean air conditions, for upgrading epMotion® 5073 with SN > 7000 and epBlue version > 40.7 | 5073 001 333 | |
| CleanCap Upgrade Set for epMotion® 5075 , includes UV lamp and air filter system for decontamination and pipetting under clean air conditions, for upgrading epMotion® 5075 with SN > 10,000 and epBlue version > 50.0 | 5075 001 888 | |
| Loading frame for epMotion® 96 | 5069 072 005 | |
| Adapter 384-well plate for epMotion® 96 | 5069 073 001 | |
| Modification kit for 2-position slider (4.5 mm increments) including constant-force spring, shielding plates (epMotion® 96 and 96xl), screws, guiding aid and holding devices (epMotion® 96 as of serial number 2008, all epMotion 96xl) | 5069 878 506 | |
| O-ring tool set , with separator, blade, hook, mounting cone, mounting cylinder | 5069 858 505 | |
| O-ring black , 100 pieces | 5069 867 504 | |

| Description | International Ordering no. | North America Ordering no. |
|--|-------------------------------|-------------------------------|
| Dispensing tools | | |
| Highly precise pipetting heads, for use in the tool holder of the epMotion® workstation. Each dispensing tool is completely autoclavable at 121 °C, 1 bar for 20 min. A quality certificate for the measurement results accompanies each tool. | | |
| TS 10, single-channel dispensing tool for the volume range 0.2–10 µL | 5280 000 100 | |
| TS 50, single-channel dispensing tool for the volume range 1–50 µL | 5280 000 010 | 960001010 |
| TS 300, single-channel dispensing tool for the volume range 20–300 µL | 5280 000 037 | 960001028 |
| TS 1000, single-channel dispensing tool for the volume range 40–1,000 µL | 5280 000 053 | 960001036 |
| TM 10-8, 8-channel dispensing tool for the volume range 0.2–10 µL | 5280 000 304 | |
| TM 50-8, 8-channel dispensing tool for the volume range 1–50 µL | 5280 000 215 | 960001044 |
| TM 300-8, 8-channel dispensing tool for the volume range 20–300 µL | 5280 000 231 | 960001052 |
| TM 1000-8, 8-channel dispensing tool for the volume range 40–1,000 µL | 5280 000 258 | 960001061 |
| Holder for 6 dispensing tools | 5075 774 003 | 960001109 |
| epT.I.P.S.® Motion pipette tips | | |
| Pipette tips in individual racks, for use with the epMotion®. Tip type and size are automatically recognized on the device. 96 epT.I.P.S.®/rack | | |
| Without filter | | |
| 10 µL, sterile, volume range 0.2–10 µL, 10 × 96 tips in racks | 0030 015 185 | |
| 50 µL, sterile, volume range 1–50 µL, 10 × 96 tips in racks | 0030 015 207 | |
| 300 µL, sterile, volume range 20–300 µL, 10 × 96 tips in racks | 0030 015 223 | |
| 1,000 µL, sterile, volume range 40–1,000 µL, 10 × 96 tips in racks | 0030 015 240 | |
| 10 µL, Eppendorf Quality, volume range 0.2–10 µL, 10 × 96 tips in racks | 0030 014 383 | |
| 50 µL, Eppendorf Quality, volume range 1–50 µL, 10 × 96 tips in racks | 0030 014 405 | |
| 300 µL, Eppendorf Quality, volume range 20–300 µL, 10 × 96 tips in racks | 0030 014 448 | |
| 1,000 µL, Eppendorf Quality, volume range 40–1,000 µL, 10 × 96 tips in racks | 0030 014 480 | |
| 10 µL, Reloads, Eppendorf Quality, volume range 0.2–10 µL, Reloads, 12 × 2 trays with 96 tips | 0030 014 545 | |
| 50 µL, Reloads, Eppendorf Quality, volume range 1–50 µL, Reloads, 12 × 2 trays with 96 tips | 0030 014 421 | |
| 300 µL, Reloads, Eppendorf Quality, volume range 20–300 µL, Reloads, 12 × 2 trays with 96 tips | 0030 014 464 | |
| 1,000 µL, Reloads, Eppendorf Quality, volume range 40–1,000 µL, Reloads, 12 × 2 trays with 96 tips | 0030 014 502 | |
| 50 µL, SafeRacks, Eppendorf Quality, volume range 1–50 µL, 10 × 96 tips in racks | 0030 014 600 | |
| 300 µL SafeRack, Eppendorf Quality, volume range 20–300 µL, 10 × 96 tips in racks. | 0030 014 626 | |
| 1,000 µL, SafeRacks, Eppendorf Quality, volume range 40–1,000 µL, 10 × 96 tips in racks | 0030 014 642 | |
| With filter | | |
| 10 µL, sterile, PCR clean, volume range 0.2–10 µL, 10 × 96 tips in racks | 0030 015 193 | |
| 50 µL, sterile, PCR clean, volume range 1–50 µL, 10 × 96 tips in racks | 0030 015 215 | |
| 300 µL, sterile, PCR clean, volume range 20–300 µL, 10 × 96 tips in racks | 0030 015 231 | |
| 1,000 µL, sterile, PCR clean, volume range 40–1,000 µL, 10 × 96 tips in racks | 0030 015 258 | |
| 10 µL, PCR clean, volume range 0.2–10 µL, 10 × 96 tips in racks | 0030 014 391 | |
| 50 µL, PCR clean, volume range 1–50 µL, 10 × 96 tips in racks | 0030 014 413 | |
| 300 µL, PCR clean, volume range 20–300 µL, 10 × 96 tips in racks | 0030 014 456 | |
| 1,000 µL, PCR clean, volume range 40–1,000 µL, 10 × 96 tips in racks | 0030 014 499 | |
| 10 µL, Reloads, PCR clean, sterile, volume range 0.2–10 µL, Reloads, 12 × 2 trays with 96 tips | 0030 014 561 | |
| 50 µL, Reloads, PCR clean, sterile, volume range 1–50 µL, Reloads, 12 × 2 trays with 96 tips | 0030 014 529 | |
| 300 µL, Reloads, PCR clean, sterile, volume range 20–300 µL, Reloads, 12 × 2 trays with 96 tips | 0030 014 537 | |
| 1000 µL Reloads, PCR clean, sterile, volume range 40–1,000 µL, 10 × 96 tips in racks. | 0030 014 570 | |
| 10 µL, Reloads, PCR clean, volume range 0.2–10 µL, Reloads, 12 × 2 trays with 96 tips | 0030 014 553 | |
| 50 µL, Reloads, PCR clean, volume range 1–50 µL, Reloads, 12 × 2 trays with 96 tips | 0030 014 430 | |
| 300 µL, Reloads, PCR clean, volume range 20–300 µL, Reloads, 12 × 2 trays with 96 tips | 0030 014 472 | |
| 1,000 µL, Reloads, PCR clean, volume range 40–1,000 µL, Reloads, 12 × 2 trays with 96 tips | 0030 014 510 | |
| 50 µL, SafeRacks, PCR clean, volume range 1–50 µL, 10 × 96 tips in racks | 0030 014 618 | |
| 300er SafeRacks, PCR clean, volume range 20–300 µL, 10 × 96 tips in racks | 0030 014 634 | |
| 1,000 µL, SafeRacks, PCR clean, volume range 40–1,000 µL, 10 × 96 tips in racks | 0030 014 650 | |
| TipHolder, for epT.I.P.S.® Motion Reloads | 5075 751 399 | |
| Box for epT.I.P.S.® Motion 10/50/300 µL Reload, set of 10 empty boxes, reusable | 0030 014 669 | |
| Box for epT.I.P.S.® Motion 1000 µL Reload, set of 10 empty boxes, reusable | 0030 014 677 | |
| Clip for epT.I.P.S.® Motion Reloads, set of 5 clips, mandatory use to clamp trays on the Box for epT.I.P.S.® Motion 10/50/300/1000 µL Reloads, autoclavable | 5075 751 070 | |

| Description | International Ordering no. | North America Ordering no. |
|---|----------------------------|----------------------------|
| Other consumables for epMotion® | | |
| 10 mL reservoir , for use with reservoir rack, 5 × 10 large volume reservoirs, PCR clean | 0030 126 521 | |
| 30 mL reservoir , for use with reservoir rack, 5 × 10 large volume reservoirs, PCR clean | 0030 126 505 | 960051009 |
| 100 mL reservoir , for use with reservoir rack, 5 × 10 large volume reservoirs, PCR clean | 0030 126 513 | 960051017 |
| Reservoir 400 mL , large reservoir in SLAS/ANSI format gippable, 10 pieces, e.g. for use in vacuum station | 5075 751 364 | 960002229 |
| Low dead volume reservoir 195 mL , single well with 96 cavities, PCR clean, 4 × 5 reservoirs | 0030 126 556 | |
| Waste bags , for waste bag holder of epMotion® 5070/5073/5075 with SN < 10,000 and epMotion® 5073 with SN > 10,000. Up to 7 L capacity, ideal for disposing biologically hazardous waste, autoclavable, PP material, thickness 50 µm, transparent, 50 bags. | 5075 751 763 | |
| Waste bags , for waste bag holder of epMotion® 5070/5073/5075 with SN < 10,000 and epMotion® 5073 with SN > 10,000. Up to 7 L capacity, ideal for disposing non hazardous waste, autoclavable, PP material, thickness 50 µm, transparent, 50 bags. | 5075 751 780 | |
| Waste bags , for waste bag holder of epMotion® 5075 with SN > 10,000. Up to 10 L capacity, ideal for disposing biologically hazardous waste, autoclavable, PP material, thickness 50 µm, transparent, 50 bags. | 5075 752 034 | |
| Waste bags , for waste bag holder of epMotion® 5075 with SN > 10,000. Up to 10 L capacity, ideal for disposing non hazardous waste, autoclavable, PP material, thickness 50 µm, transparent, 50 bags. | 5075 752 050 | |
| Reservoir rack modules TC | | |
| Reservoir rack modules are inserted in a reservoir rack. They can be temperature controlled with a thermal module for heating and cooling. | | |
| PCR 0.2 mL , for 8 × 0.2 mL PCR tubes | 5075 799 049 | 960002601 |
| Safe-Lock Tubes , for 4 × 0.5/1.5/2 mL tubes | 5075 799 081 | 960002620 |
| Tubes Ø 12 mm , for 4 × Ø 12 mm tubes | 5075 799 103 | 960002630 |
| Tubes Ø 16 mm , for 4 × Ø 16 mm tubes | 5075 799 120 | 960002640 |
| Eppendorf Tubes® 5.0 mL, for 4 × 5 mL tubes | 5075 799 340 | |
| 15 mL Tubes »conical« for 4 × Ø 17 mm tubes | 5075 799 162 | 960002650 |
| 50 mL Tubes »conical« for 2 × Ø 29 mm tubes | 5075 799 189 | 960002660 |
| Reservoir adapter 10 mL , for 1 × epMotion® reservoir 10 mL | 5075 799 421 | |
| Reservoir adapter 30 mL , for 1 × epMotion® reservoir 30 mL | 5075 799 146 | 960002670 |
| Reservoir adapter 100 mL , for 1 × epMotion® reservoir 100 mL | 5075 799 260 | 960002680 |
| Racks | | |
| For individual glass or plastic tubes, no temperature control | | |
| Ø 12 mm × 60 mm max. length | 5075 792 109 | 960002351 |
| Ø 12 mm × 100 mm max. length | 5075 763 001 | 960002059 |
| Ø 13 mm × 60 mm max. length | 5075 792 087 | 960002342 |
| Ø 13 mm × 100 mm max. length | 5075 762 005 | 960002041 |
| Ø 14 mm × 60 mm max. length | 5075 792 060 | 960002334 |
| Ø 14 mm × 100 mm max. length | 5075 792 001 | 960002369 |
| Ø 15 mm × 60 mm max. length | 5075 792 044 | 960002326 |
| Ø 15 mm × 100 mm max. length | 5075 792 028 | 960002377 |
| Ø 16 mm × 60 mm max. length | 5075 776 006 | 960002164 |
| Ø 16 mm × 100 mm max. length | 5075 760 002 | 960002032 |
| Ø 17 mm × 60 mm max. length | 5075 775 000 | 960002156 |
| Ø 17 mm × 100 mm max. length | 5075 761 009 | 960002024 |
| Rack for 24 x HPLC tubes , Ø 12 mm × 40 mm max. length | 5075 792 125 | 960002380 |
| Rack for 96 x 1.5/2.0 mL screw-cap tubes , requires 2 positions on the deck | 5075 791 005 | 960002318 |
| Rack for 24 Safe-Lock tubes 0.5 mL/1.5 mL/2.0 mL, cannot be tempered, with adapter sleeves for 0.5 mL | 5075 751 453 | |
| Rack for 24 Safe-Lock tubes 1.5 mL/2.0 mL, no temperature control | 5075 751 275 | |
| Rack ILMN tubes , for single tubes, 40 x ø 8,4 mm and 12 x ø 11,2 mm | 5075 751 747 | |
| ReservoirRack , for ReservoirRack Modules TC and max. 7 of 10 mL, 30 mL and 100 mL reagent reservoirs | 5075 754 002 | 960002148 |
| ReservoirRack 3 , for max. three 10 mL, 30 mL and 100 mL reservoirs, only for 5075t | 5075 754 070 | |
| Adapter for Covaris Rack 12 x 8 Strips , for E-series rack 12 place 8 microTUBEStrip V2 from Covaris PN 500444 | 5075 754 070 | |
| Thermorack Rotor/Tubes , for temperature controlled pipetting of Qiagen® Rotor-Disc® 72/100 and 20 tubes 1.5/2.0 mL | 5075 751 801 | |
| Accessories for PCR/real-time PCR and NGS applications | | |
| TipHolder 73 enables positioning epT.I.P.S. Motion Reloadtrays above a rack of epT.I.P.S. Motion and thus doubles the tip capacity in an SLAS/ANSI position reusable and autoclavable, epBlue 40.7 or higher required | 5075 751 879 | |
| Reservoir Rack Module NGS for use with epMotion ReservoirRacks, for distributing samples and reagents for NGS-specific applications, space for 20 ILMN tubes, 4 Eppendorf Tubes 5.0 mL, 4 Eppendorf Tubes 1.5 mL | 5075 751 917 | |
| Reservoir Rack Module PCR for use with epMotion ReservoirRacks, for distributing samples and reagents for PCR, space for 48 PCR tubes 0.2 mL incl. 2 strip adapters 0.2 mL, (alternatively, space sufficient for 16 index tubes and up to 32 PCR tubes 0.2 mL), 12 Eppendorf Tubes 1.5/2.0 mL, 1 Eppendorf Tube 5.0 mL | 5075 751 933 | |
| Rack Module Tips for use with epMotion ReservoirRacks, for providing up to 16 epT.I.P.S.Motion per module and up to 7 modules per ReservoirRack (112 tips in total), set consisting of 7 modules | 5075 751 950 | |
| Tip Tool | 5285 000 000 | |

| Description | International Ordering no. | North America Ordering no. |
|---|-------------------------------|-------------------------------|
| Accessories for PCR/real-time PCR and NGS applications | | |
| Thermoblock PCR 96 OC , for temperature control and safe piercing of sealed, semi-skirted PCR plates with orientation control | 5075 751 666 | |
| Thermoadapter for Microplate 96/V/U , for holding and temperature control of Eppendorf Microplates with V or U bottom | 5075 751 577 | |
| Rack Smart , for holding one tube rack of SmartCycler reaction tubes | 5075 790 009 | 960002520 |
| Rack LC , for holding up to 96 × 20 µL or 100 µL LightCycler capillaries, for use with, e.g., Centrifuge 5804/5804 R or 5810/5810 R, set of 2 | 5075 795 000 | 960002511 |
| Thermorack CB 100 µL , for holding up to 384 × 0.1 mL strip tubes in the Corbett Research Rotor-Gene 3000 | 5075 767 031 | 960002500 |
| Thermoadapter for PCR plates, 96-well, skirted , for use with 96 × 0.2 mL tubes or a 96-well PCR plate | 5075 787 008 | 960002199 |
| Thermoadapter for PCR plates, 384-well, skirted , for use with a 384-well PCR plate | 5075 788 004 | 960002202 |
| Thermoadapter Frosty , combination of height adapter and PCR-Cooler for cooling of skirted PCR plates | 5075 789 000 | 960002300 |
| Thermoblock for PCR plates, 96-well , for heating or cooling of PCR plates; plates are exchangeable using the gripper | 5075 766 000 | 960002083 |
| Thermoblock for PCR plates, 384-well , for heating or cooling of PCR plates; plates are exchangeable using the gripper | 5075 767 007 | 960002091 |
| Thermoadapter LC , designed to hold the sample cartridge of the MagNa Pure® LC System | 5075 751 305 | 5075751305 |
| Thermorack for 24 × 0.5 mL Safe-Lock Tubes , for a supply of 24 test tubes, temperature control | 5075 769 000 | 960002067 |
| Thermorack for 24 × 1.5/2 mL Safe-Lock Tubes , for a supply of 24 test tubes, temperature control | 5075 771 004 | 960002075 |
| Thermorack, for 24 Cryo tubes , temperature control | 5075 777 055 | 960002491 |
| Thermorack TMX for 24 Safe-Lock tubes, for a supply of 0.5 mL tubes on Eppendorf ThermoMixer® of 5073t, 5075t, 5075vt, temperature control no separation | 5075 751 160 | 960002070 |
| Thermorack TMX for 24 Safe-Lock tubes, for a supply of 1.5/2 mL tubes on Eppendorf ThermoMixer® of 5073t, 5075t, 5075vt, temperature control no separation | 5075 751 186 | 960002080 |
| Thermoadapter for Deep Well Plates, 96 wells/1,000 µL | 5075 751 054 | 960002391 |
| Thermoblock DWP 2000 for 2 mL Eppendorf Deepwell Plates 96/2000 | 5075 751 330 | |
| Eppendorf Magnum FLX® Magnet Adapter , universal ring magnet plate for rapid magnetic bead separation. Supports most 96-well plates (standard, PCR, deepwell) | 5075 751 836 | |
| Accessories for vacuum station | | |
| Vac frame holder | 5075 778 009 | 960002237 |
| Vac lid | 5075 779 005 | 960002245 |
| Mat , for vacuum lid | 5075 793 008 | 960002407 |
| Vac frame 1 , for skirted filter plates | 5075 784 009 | 960002253 |
| Vac frame 2 , for semi-skirted filter plates | 5075 785 005 | 960002261 |
| Collection Plate Adapter , for handling collection microtubes in microtube racks | 5075 785 030 | 960002531 |
| Collection Plate Adapter for MN Kits | 5075 785 064 | 960002571 |
| Channeling Plate Adapter 96 , for vacuum-processing foaming solutions through multiwell plates, set of 10 | 5075 794 004 | 960002540 |
| Vac Thermo Lid , for effective drying of filter plates in epMotion® 5075 VAC vacuum chamber Note: additional thermal module required | 5075 796 007 | 960002551 |
| VAC Lid Sealing Mats, 5 pcs. | 5075751038 | 960002451 |
| Other accessories | | |
| Gripper , incl. holder, for transporting plates on the worktable and automatic operation of the vacuum manifold | 5282 000 018 | 960002270 |
| Holder for Gripper , compatible with 5073 (SN < 6000) and all 5075 | 5075 759 004 | 960002211 |
| Gripper Tower , enables positioning epT.I.P.S.® Motion Reload trays in the parking position of the gripper and holds the gripper when it is not in use; only for use with epMotion® 5073 as of serial number 6000; Gripper 5282 000 018 needs to be ordered additionally | 5075 751 895 | |
| Liquid Waste System , consisting of splash protection, waste funnel, waste tub, tub lid. For use on epMotion® 5073 and epMotion® 5075 with SN > 10,000. | 5075 799 448 | |
| PrepRack for 24 Safe-Lock tubes 2 mL | 5073 751 006 | |
| Height adapter 85 mm for uniform levels of labware; enables faster processing of the plate | 5075 751 003 | 960002105 |
| Height adapter 55 mm for uniform levels of labware; enables faster processing of the plate | 5075 752 000 | 960002113 |
| Height adapter 40 mm for uniform levels of pipette tips; enables faster processing of the plate | 5075 755 009 | 960002121 |
| Adapter sleeves , 1 set = 25 pieces for reconfiguration of the thermo rack (1.5/2.0 mL) for use with 0.5 mL tubes | 5075 772 000 | 960002172 |
| Tipholder for epMotion® reload tips | 5075 751 399 | |

Your local distributor: www.eppendorf.com/contact
Eppendorf SE · Barkhausenweg 1 · 22339 Hamburg · Germany
eppendorf@eppendorf.com · www.eppendorf.com

www.eppendorf.com/automation

Eppendorf SE reserves the right to modify its products and services at any time. This brochure is subject to change without notice. Although prepared to ensure accuracy, Eppendorf SE assumes no liability for errors, or for any damages resulting from the application or use of this information. Referring to this brochure alone cannot as such provide for or replace reading and respecting the current version of the operating manual."

MVS® is a registered trademark of Artel Inc., USA. MagNa pure® is a registered trademark of Roche Diagnostics GmbH. Qiagen® and Rotor-Disc® are registered trademarks of Qiagen GmbH, Germany, Eppendorf®, the Eppendorf Brand Design, epMotion®, Eppendorf Magnum FLX® Eppendorf Tubes®, epT.I.P.S.®, epBlue®, Eppendorf ThermoMixer® the Eppendorf Service logo, epServices for premium performance® are registered trademarks of Eppendorf SE, Germany.
All rights reserved, including graphics and images. Order No.: AA01 030 320/EN2/0T/0624/PDF/Web. Copyright © 2024 by Eppendorf SE.