

Installation guide

epBlue™ ID

English (EN)

This information is a supplement to the operating manuals of epBlue and epMotion and it does not replace these operating manuals. In combination with Zebra DS8108 barcode scanner epBlue ID is compatible to epBlue version 40.7 and higher.

1 Handheld Barcode Reader

The included handheld barcode reader is pre-configured by Eppendorf.

If the barcode reader is not recognized by epBlue, reset the configuration of the barcode reader as follows.

Prerequisites

- epBlue ID is installed on the MultiCon.

1. Switch on the MultiCon and wait for the Windows desktop to appear.
2. Connect the barcode reader to a USB port on the MultiCon.
3. Scan the configuration barcode.



Fig. 1: Zebra DS8108 configuration barcode

4. Wait for the system to detect the barcode reader and configure the driver.

The barcode reader is now ready for use with epBlue.

For information on compatible barcodes refer to the technical data section of the operating manual.

2 Activate licenses

For the epBlue ID modification kit it is necessary to activate a computer-specific license to run the software functionality.

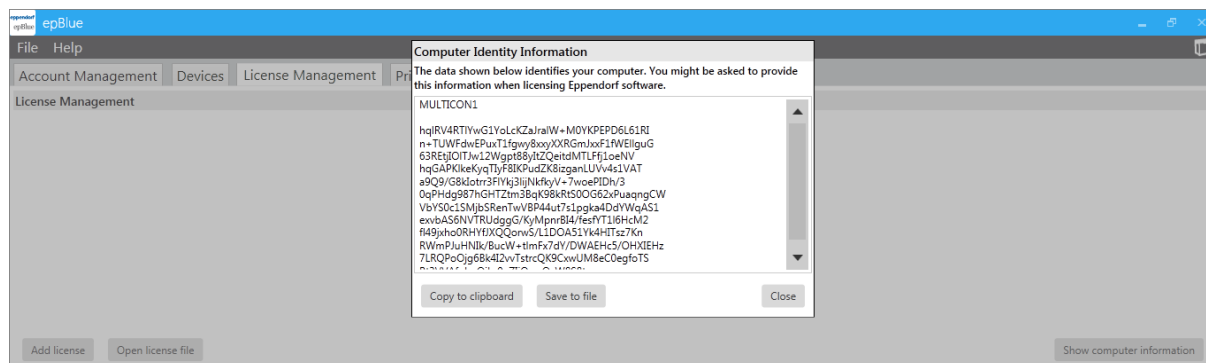
2.1 Request an activation license

Prerequisites

- epMotion and MultiCon were installed by a service technician.
- A USB-storage medium is connected to the MultiCon.
- A user belonging to the user group *Administrator Lab* is logged in.

1. Click on the symbol *Settings* on the start screen of software epBlue.
2. Select the tab *License Management*.
3. Press the button *Show computer information*.

The window *Computer Identity Information* opens.

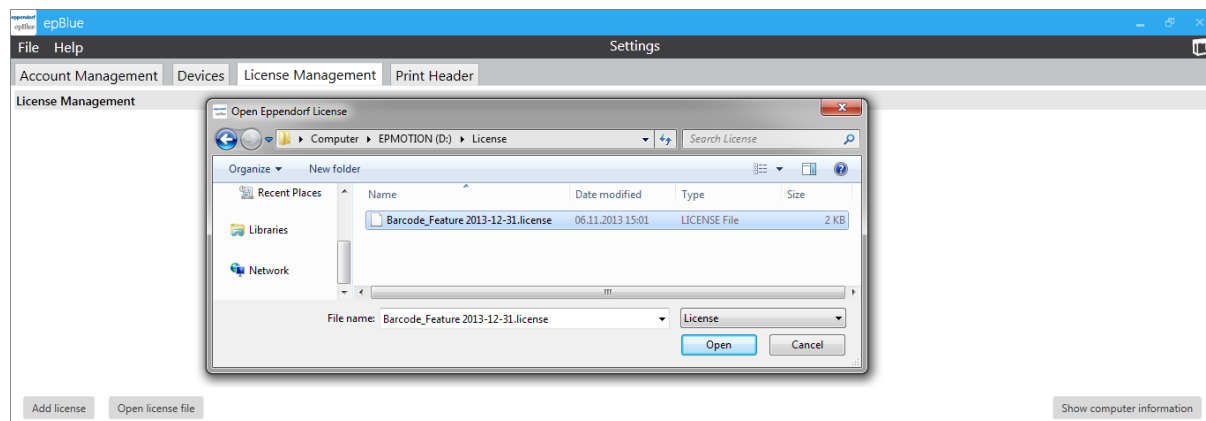


4. Press the button *Save to file*.
5. Select a directory on the USB storage medium.
6. Press the button *Save*.
A text file containing the computer identity information is saved.
7. To request your epBlue ID license, register on webpage www.eppendorf.com/software-licensing.
8. Copy the content of the text file from the USB storage medium to the appropriate field on the webpage.



You will receive an epBlue ID license file per e-mail within 48 hours.

2.2 Import license file



Prerequisites

- A user belonging to the user group *Administrator Lab* is logged in.
- The tab *Settings > License Management* is open.
- The USB storage medium containing the epBlue ID license is connected to the MultiCon.

1. Press the button *Open license file*.
The window *Open Eppendorf License* opens.
2. Select the license to be imported.
3. Press the button *Open*.
License is inserted.

Your local distributor: www.eppendorf.com/contact

Eppendorf AG · Barkhausenweg 1 · 22339 Hamburg · Germany
eppendorf@eppendorf.com · www.eppendorf.com