

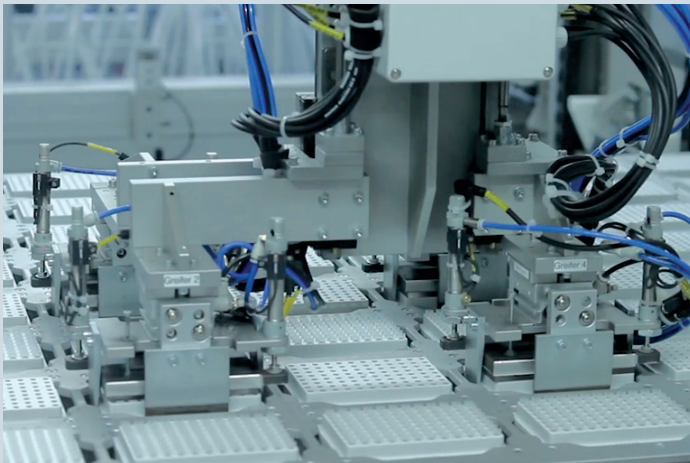


Confidence in Your Consumables

Precision. Purity. Performance.

Eppendorf Quality Commitment

Eppendorf® is a leading manufacturer of high-quality consumables for research laboratories. With the introduction of the first 1.5 mL microcentrifuge tube in 1963, we set a universal standard that to this day is still used in all research and diagnostic laboratories throughout the world. We strive to constantly improve our manufacturing techniques so that researchers around the world have a product they can rely on.



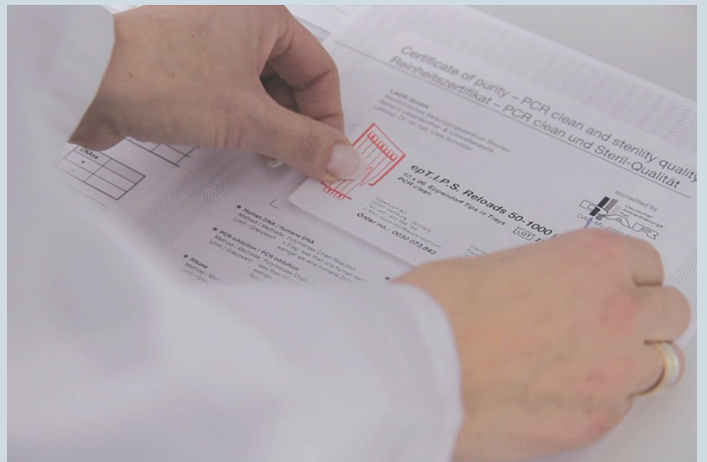
Manufacturing is done under clean room conditions and is a fully automated process eliminating human interaction as much as possible.



Our commitment to quality is second to none. From the raw material down to the final product, we perform routine quality checks to ensure the consumable is manufactured to exact specifications; delivering the performance you've come to expect from Eppendorf.



Regular maintenance of our molding tools guarantees stringent production tolerances, ensuring batch-to-batch and tube-to-tube consistency.



As a commitment to product purity, each production lot of PCR Clean, Forensic DNA Grade, Sterile, and Eppendorf Biopur® quality products is tested and certified by an independent, third-party laboratory to guarantee purity.

»Eppendorf Consumables are manufactured without the use of slip agents, plasticizers and biocides — substances that have been shown to leach from plastic consumables into the sample and negatively affect bioassays«

Leachables can affect bioassay results

Chemicals used in the manufacturing of disposable plastic labware, such as slip agents, plasticizers or biocides, can leach out of the plastic into your samples. Recent scientific reports have shown that these chemicals can be carried over to all of your downstream applications leading to erroneous results.¹⁻⁶

Original Eppendorf Tubes and Eppendorf Plates are produced without additives that have been shown to influence bioassay results. Trust in Eppendorf consumables because your samples deserve the best treatment!

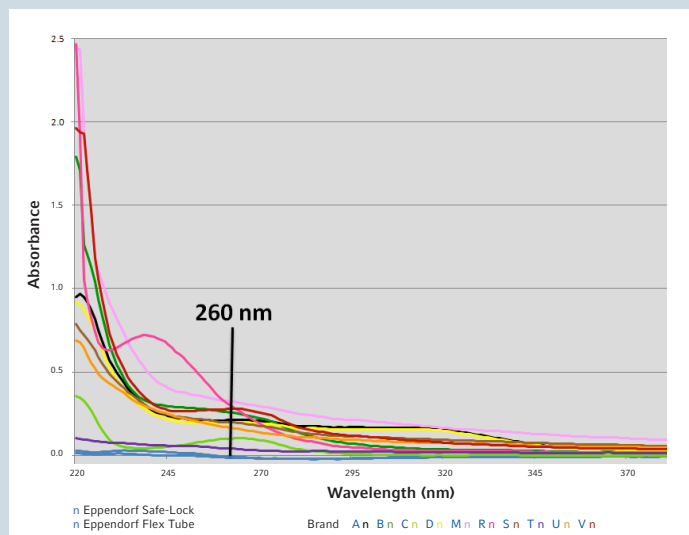


Figure 1: Chemicals released from different brands of tubes can contaminate your sample. Shown are UV absorbance spectra of pure water that was incubated for 30 min at 95 °C in tubes from different manufacturers. As described in a recent publication,³ one of the effects that these chemicals can have is that they skew absorbance readings and lead to erroneous DNA quantification.

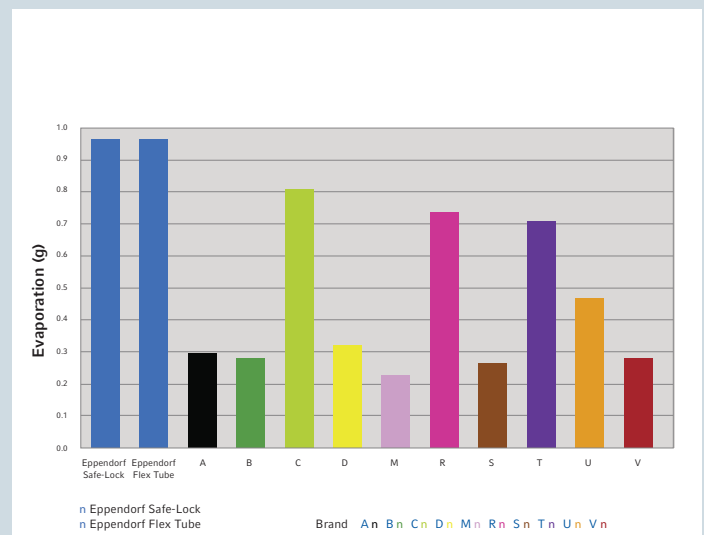


Figure 2: The brand of tube can affect evaporation rate. Chemicals, for example, oily slip agents, released from the tube plastic can slow down evaporation. Method described in footnote.* Some of these slip agents (e.g., oleamide) have also been shown to negatively affect the outcome of biological tests like enzyme activity or receptor — binding assays.^{1,2,5}

References:

- ¹McDonald G. R. et al.: *Science*, 322, 917 (2008)
²Reid G. et al.: *GIT Laboratory Journal*, 9-10, 2-4 (2009)
³Lewis, L. K. et al.: *BioTechniques*, 48, 297-302 (2010)
⁴Belaiche C. et al.: *Clin. Chem.*, 55, 1883-1884 (2009)
⁵Watson J. et al.: *J Biomol Screen*, 14(5), 566-572 (2009)
⁶Olivieri A. et al.: *Can. L. Phys. Pharm.* 90, 697-703 (2012)

* Method for Figure 2: 1.5 mL microcentrifuge tubes from different brands were loaded with 1 mL dH₂O and incubated at 60 °C for 60 min with mixing at 1,400 rpm on a Thermomixer® R. After incubation, tubes were weighed and then loaded into the Vacufuge® plus and spun on the aqueous setting with vacuum (V-AQ) for 3 hrs. The tubes were weighed a second time. The graph shows the difference in the volume of the tubes before and after vacuum concentration.

Tubes

Microcentrifuge Tubes

Small-volume tubes (0.5–2 mL and 5 mL) designed for sample preparation, processing, and high-speed centrifugation. Their secure sealing and chemical resistance make them ideal for short-term benchtop use and reliable performance in microcentrifuges.

Eppendorf Safe-Lock Tubes

- > Made from high-purity polypropylene free from slip agents, plasticizers, and biocides
- > Available in 0.5 mL, 1.5 mL, 2.0 mL
- > Hinged Eppendorf Safe-Lock lid prevents unintentional opening
- > g-Safe® design supports up to 30,000 × *g*
- > Available in certified purity grades PCR clean, Biopur® and Eppendorf Forensic DNA Grade and in Standard Eppendorf Quality
- > Colored tube options also available

Safe-Lock Tubes BioBased

- > Made from biobased polypropylene using 2nd-generation recycled feedstock (e.g., used cooking oil)
- > Available in 0.5 mL, 1.5 mL, and 2.0 mL
- > Hinged Eppendorf Safe-Lock lid prevents unintentional opening
- > g-Safe® design supports up to 30,000 × *g*
- > Available in certified purity grade PCR clean and Standard Eppendorf Quality
- > ACT Certification - 3rd party validation provided by My Green Lab

Flex Tube®

- > Made from high-purity polypropylene free from slip agents, plasticizers, and biocides
- > Available in 1.5 mL
- > Ergonomic lid—easy to open and close for user comfort with frosted lid and side surface for easy labeling
- > g-Safe® design supports up to 30,000 × *g*
- > Available in certified purity grade PCR clean and Standard Eppendorf Quality
- > Colored tube options available

DNA LoBind® / Protein LoBind® Tubes

- > Manufactured from polypropylene without surface coatings (e.g., silicone) to reduce risk of sample interference
 - DNA LoBind: Optimized to minimize binding of DNA and RNA
 - Protein LoBind: Optimized to minimize binding of proteins
- > Available in 0.5 mL, 1.5 mL, and 2.0 mL tubes
- > Supports up to 30,000 × *g* except for the 2.0 mL tube rated up to 25,000 × *g*
- > Available in certified purity grade PCR clean - free of human DNA, DNase, RNase, and PCR inhibitors



Tubes

Microcentrifuge Tubes, cont.

SafeCode Tubes

- > Made from high-quality polypropylene for maximum purity and reliability
- > Available in 1.5 mL, and 2.0 mL tubes
- > 2-level coding: Human readable and 2D DataMatrix code with ECC 200 error correction (can be read even with up to 25% code damage) lasered into tube lid.
- > Digital lot-specific information (e.g., lot number, product type) available



Eppendorf 5.0 mL Tubes

- > Made from exceptionally high-quality, transparent polypropylene
- > Free of plasticizers, biocides, and mold release agents for maximum sample integrity
- > Available with snap cap and screw cap
- > Centrifugation stability up to 25,000 × g
- > Available in certified purity grades PCR clean, Sterile, Eppendorf Biopur®, Forensic DNA Grade, and Standard Eppendorf Quality

Note: Eppendorf Tubes® BioBased 5.0mL also available. See Conical Tube section for more information.



Conical Tubes

Medium- to large-volume (15, 25, and 50 mL) tube types with conical bases, designed for centrifugation, cell culture, and sample collection.

Eppendorf Conical Tubes

- > Made from premium polypropylene — free of plasticizers, biocides, and mold release agents for maximum sample integrity across 15 mL, 25 mL, and 50 mL formats
- > Available in 15, 25 and 50 mL
- > Cap options: 15 mL: Screw cap; 25 mL & 50 mL: Ergonomic SnapTec® cap (single-handed) and screw cap
- > Centrifugation stability up to to 25,000 × g for 15 mL & 50 mL and up to 17,000 × g for 25 mL
- > Available in certified purity grade PCR clean, Sterile, and Biopur® and Standard Eppendorf Quality



Eppendorf Tubes® BioBased

- > Produced using 2nd-generation recycled feedstock from waste and residue streams - free of slip agents, plasticizers, and biocides to ensure high sample integrity
- > Available in 5, 15, 25 and 50 mL
- > Screw cap design with secure sealing
- > ISCC PLUS certified for full traceability along the sustainable supply chain and ACT certification by My Green Lab®



Tubes

Conical Tubes, cont.

SafeCode Conical Tubes

- > Manufactured from high-quality polypropylene for maximum sample purity
- > Available in 5, 15 and 50 mL
- > 2-level coding: Human readable and 2D DataMatrix code side coding with ECC 200 error correction (can be read even with up to 25% code damage)
- > Lot-specific data and tube info digitally accessible via Eppendorf dataport and website



Cryovials / Cryostorage Vials

Vials specially engineered for long-term storage at ultra-low or cryogenic temperatures.

- > Made from high-quality polypropylene
- > Available in 0.5, 1, 1.5, 2 and 4mL
- > Pre-capped screw cap
- > Pre-racked format supports efficient and contamination-reducing workflows
- > 3-level coding for safe sample identification: Human Readable code, 1D barcode and 2D DataMatrix with ECC 200 error correction (reads even if up to 25% of the code is damaged)
- > Extremely broad temperature range: $-196\text{ }^{\circ}\text{C}$ (LN_2 gas phase) to $+121\text{ }^{\circ}\text{C}$
- > Vial-specific information available on Eppendorf website for documentation and compliance



PCR Tubes

PCR tubes are small, thin-walled plastic tubes designed to withstand rapid temperature changes and ensure efficient heat transfer during PCR.

- > Made from high-purity polypropylene for high transparency and sample integrity
- > Available in 0.1 mL, 0.2 mL, and 0.5 mL volumes
- > Cap options include flat, dome, or individually attached caps
- > Available in certified purity grades PCR clean, and Eppendorf Forensic DNA Grade
- > Available in Eppendorf twin.tec® PCR strip format for ease of handling

Note: Eppendorf Fast PCR Tube Strips are made from high-quality polyethylene and feature 0.1 mL thin-walled tubes with attached flat caps, designed for rapid thermal transfer and optimized for fast-cycling PCR applications



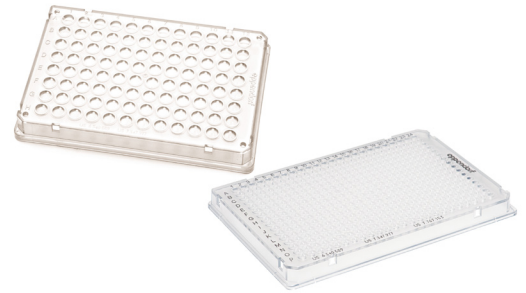
Plates

PCR Plates

twin.tec® PCR plates are engineered for reliable thermal performance in PCR and qPCR workflows. Constructed with polycarbonate frames and polypropylene wells for stability and optimal heat transfer. Plates can be sealed with cap strips, adhesive films or foils, and heat sealing films or foils. Multiple frame colors available for easy identification.

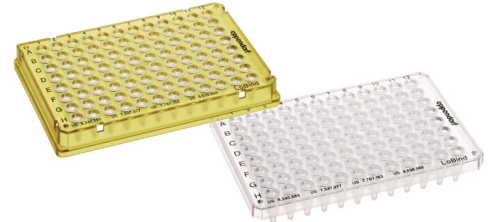
Eppendorf twin.tec® PCR Plates

- > 96- and 384-well formats
- > 96-well frame options: skirted, semi-skirted, unskirted and unskirted divisible with low profile (150 µL) and high profile (250µL) options.
- > Purity Grades: PCR Clean or Forensic DNA Grade
- > Available in standard, LoBind, real-time (white wells), Trace, and Trace BioBased versions



Eppendorf twin.tec® PCR Plates LoBind®

- > 96- and 384-well formats
- > 96-well frame options: skirted low profile (150 µL) and semi-skirted high profile (250 µL) options
- > Purity grade: PCR Clean
- > Designed to maximize the yield of target molecules, ideal for low-concentration or precious samples



Eppendorf twin.tec® real-time PCR Plates

- > 96-well format with low profile (150 µL) and high profile (250 µL) options.
- > Frame options: skirted, semi-skirted and unskirted
- > Purity Grades: PCR Clean or Forensic DNA Grade
- > White wells for improved signal in qPCR
- > Excellent fluorescence reflection for consistent results



Eppendorf twin.tec® Trace PCR Plates

- > 96- and 384-well formats
- > 96-well frame options: skirted low profile (150 µL) and semi-skirted high profile (250 µL) options
- > Purity grade: PCR Clean
- > Features include laser-engraved lot number and expiration date on each single plate and an optical guiding grid for quick well-orientation
- > BioBased version available, made from renewable resources and engineered to deliver the same performance as our non-biobased



Plates

Microplates

Engineered from polypropylene for assay prep, sample handling, and automation compatibility. All compliant with ANSI/SLAS (SBS) format. Featuring exceptional centrifugation stability (up to 6,000 × g), RecoverMax® well design for maximum sample volume recovery, and OptiTrack® matrix for easy well identification while pipetting manually.

Eppendorf Microplates

- > 96- and 384-well formats with skirted frames
- > Well bottoms can be flat (F), round (U) or conical (V)
- > Purity Grade: PCR Clean or Sterile
- > Raised well rims and smooth surfaces for reliable sealing
- > Available in standard, DNA LoBind, Protein LoBind and Assay/Reader Microplates



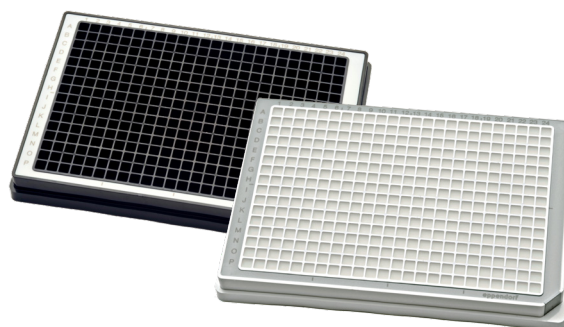
Eppendorf Microplates LoBind®

- > 96- and 384-well formats with skirted frames and conical (V) well bottoms
- > Purity Grade: PCR Clean
- > DNA LoBind
 - 96-well V-bottom and 384-well V-bottom
 - Special manufacturing technology and targeted polypropylene design enhance nucleic acid recovery without surface coatings.
- > Protein LoBind
 - 384-well V bottom
 - Two-component polypropylene polymer creates a hydrophilic surface, preventing samples from binding to the surface of the plate.



Eppendorf Assay Plates

- > 96- and 384-well formats with skirted frames
- > Well bottoms can be flat (F), round (U) or conical (V)
- > Purity Grade: PCR Clean
- > Black wells are optimized for fluorescence assays
- > White wells are optimized for luminescence assays or weak fluorescence detection
- > All assay plates are optimized for minimal auto-fluorescence/auto-luminescence in top reading plate readers.



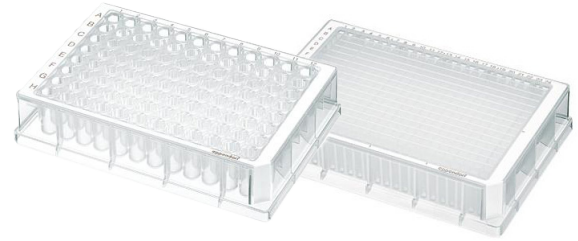
Plates

Deepwell Plates

Ideal for sample storage, preparation, and centrifugation. Made from chemically resistant polypropylene and available in multiple formats. Featuring exceptional centrifugation stability (up to $6,000 \times g$), RecoverMax® well design for maximum sample volume recovery, and OptiTrack® matrix for easy well identification while pipetting manually. Multiple frame colors available for easy identification.

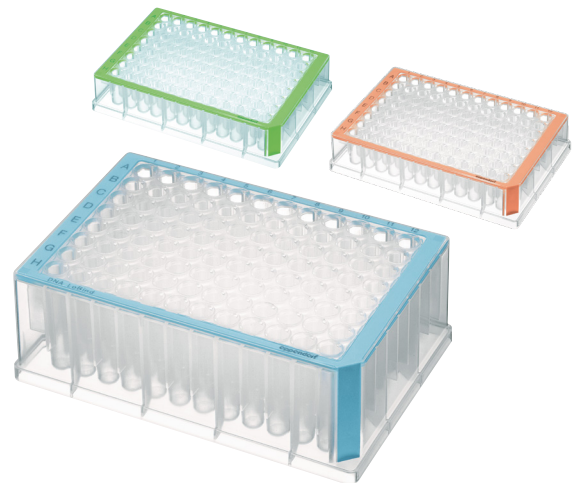
Eppendorf Deepwell Plates

- > 96- and 384-well with volumes from 200µL to 2000µL
- > Conical well bottoms on 96-well 2000µL and 384-well plates
- > Round well bottoms on 96-well 500µL and 1000µL plates
- > Purity Grade: PCR Clean or Sterile
- > Raised well rims and smooth surfaces for reliable sealing
- > Available in standard, DNA LoBind, and Protein LoBind



Eppendorf Deepwell Plates LoBind®

- > 96- and 384-well formats
- > Purity Grade: PCR Clean
- > DNA LoBind
 - 96-well 500 µL or 1000 µL featuring round bottoms
 - White or blue frame options
 - Special manufacturing technology and targeted polypropylene design enhance nucleic acid recovery without surface coatings
- > Protein LoBind
 - 96-well 500 µL, 1000 µL featuring round bottoms
 - 96-well 2000 µL and 384-well 200 µL featuring conical bottoms
 - White or yellow frame options
 - Two-component polypropylene polymer creates a hydrophilic surface, preventing samples from binding to the surface of the plate



Plates

Barcoded Plates

Eppendorf plates with barcoding, supporting inventory and sample tracking.

Eppendorf Microplates

- > Unique, laser-engraved barcodes
- > Barcoding Language: 2D barcode (Code 128 DataMatrix), 1D barcode (Code 128), and human-readable ID on each plate
- > Barcode Location: Left and right sides of plate have 1D Barcode, front of plate has 2D and 1D barcode, plus human readable
- > Visit eppendorf.com/us-en/certificates/safeCode to easily access all documents (ex: lot-specific certificates, technical drawings, instructions, etc.) by entering/scanning the barcode number
- > Purity Grade: PCR Clean
- > PCR plates
 - 96 and 384-well formats with clear, skirted frames
 - 96-well formats have additional skirted frame colors (blue, green, and red)
- > Microplates
 - 96-well V Bottom format
- > Deepwell plates
 - 96-well 500 μ L, 1000 μ L featuring round bottoms
 - 96-well 2000 μ L and 384-well 200 μ L featuring conical bottoms

Custom Barcoded Plates

- Custom, high-quality 1D barcode/human readable stickers, made to order
- Customizable barcode prefixes for the Barcoding Language of your choice: Code 128 (8-digit or 10-digit), code 39, or interleaved
- Custom-select what information (1D barcode, human readable, or both) to be displayed, as well as label location
- Purity Grade dependent on "base plate" to which barcode is added
- Offers flexibility in plate type, e.g., skirted/semi-skirted, microplate/deepwell plate, and standard material/LoBind



Ordering Information: Tubes

| Ordering information | | | | | | | |
|---|--------|--------|--------------------|-----------|----------|--------------------------|--------------|
| Tube Type | Size | Color* | Eppendorf Quality | Pkg. Qty. | Cap Type | Features | Catalog No. |
| Eppendorf Safe-Lock Tubes | 0.5mL | ○ | Eppendorf Quality | 500 | | | 022363611 |
| Eppendorf Safe-Lock Tubes | 0.5mL | ● | Eppendorf Quality | 500 | | | 022363671 |
| Eppendorf Safe-Lock Tubes | 0.5mL | ● | Eppendorf Quality | 500 | | | 022363662 |
| Eppendorf Safe-Lock Tubes | 0.5mL | ● | Eppendorf Quality | 500 | | | 022363646 |
| Eppendorf Safe-Lock Tubes | 0.5mL | ● | Eppendorf Quality | 500 | | | 022363654 |
| Eppendorf Safe-Lock Tubes | 0.5mL | ● | Eppendorf Quality | 500 | | Amber (light protection) | 022363638 |
| Eppendorf Safe-Lock Tubes | 0.5mL | | Eppendorf Quality | 500 | | Assorted colors per 100 | 022363697 |
| Eppendorf Safe-Lock Tubes | 0.5mL | ○ | Biopur® | 50 | | | 022600001 |
| Eppendorf Safe-Lock Tubes | 0.5mL | ○ | Forensic DNA Grade | 500 | | | 0030 123 603 |
| Eppendorf Safe-Lock Tubes | 0.5 mL | ○ | PCR Clean | 500 | | | 022363719 |
| Eppendorf Safe-Lock Tubes | 1.5 mL | ○ | Eppendorf Quality | 500 | | | 022363204 |
| Eppendorf Safe-Lock Tubes | 1.5 mL | ● | Eppendorf Quality | 500 | | | 022363301 |
| Eppendorf Safe-Lock Tubes | 1.5 mL | ● | Eppendorf Quality | 500 | | | 022363280 |
| Eppendorf Safe-Lock Tubes | 1.5 mL | ● | Eppendorf Quality | 500 | | | 022363247 |
| Eppendorf Safe-Lock Tubes | 1.5 mL | ● | Eppendorf Quality | 500 | | | 022363263 |
| Eppendorf Safe-Lock Tubes | 1.5 mL | ● | Eppendorf Quality | 500 | | Amber (light protection) | 022363379 |
| Eppendorf Safe-Lock Tubes | 1.5 mL | | Eppendorf Quality | 500 | | Assorted colors per 100 | 022363328 |
| Eppendorf Safe-Lock Tubes | 1.5 mL | ○ | Biopur® | 100 | | | 022600028 |
| Eppendorf Safe-Lock Tubes | 1.5 mL | ○ | Forensic DNA Grade | 500 | | | 0030123611 |
| Eppendorf Safe-Lock Tubes | 1.5 mL | ○ | PCR Clean | 500 | | | 022363212 |
| Eppendorf Safe-Lock Tubes | 1.5 mL | ● | PCR Clean | 500 | | Amber (light protection) | 022363221 |
| Eppendorf Safe-Lock Tubes | 2.0 mL | ○ | Eppendorf Quality | 500 | | | 022363352 |
| Eppendorf Safe-Lock Tubes | 2.0 mL | ● | Eppendorf Quality | 500 | | | 022363450 |
| Eppendorf Safe-Lock Tubes | 2.0 mL | ● | Eppendorf Quality | 500 | | | 022363433 |
| Eppendorf Safe-Lock Tubes | 2.0 mL | ● | Eppendorf Quality | 500 | | | 022363395 |
| Eppendorf Safe-Lock Tubes | 2.0 mL | ● | Eppendorf Quality | 500 | | | 022363417 |
| Eppendorf Safe-Lock Tubes | 2.0 mL | ● | PCR Clean | 500 | | Amber (light protection) | 022363379 |
| Eppendorf Safe-Lock Tubes | 2.0 mL | | Eppendorf Quality | 500 | | Assorted colors per 100 | 022363476 |
| Eppendorf Safe-Lock Tubes | 2.0 mL | ○ | Biopur® | 100 | | | 022600044 |
| Eppendorf Safe-Lock Tubes | 2.0 mL | ○ | Forensic DNA Grade | 500 | | | 0030123620 |
| Eppendorf Safe-Lock Tubes | 2.0 mL | ○ | PCR Clean | 500 | | | 022363344 |
| Eppendorf Safe-Lock Tubes BioBased | 1.5 mL | | Eppendorf Quality | | | | 0030123093 |
| Eppendorf Safe-Lock Tubes BioBased | 2.0 mL | | Eppendorf Quality | | | | 0030123174 |
| Eppendorf Safe-Lock Tubes BioBased | 0.5 mL | | Eppendorf Quality | | | | 0030123050 |
| Eppendorf Safe-Lock Tubes BioBased | 0.5 mL | | PCR Clean | | | | 0030123077 |
| Eppendorf Safe-Lock Tubes BioBased | 1.5 mL | | PCR Clean | | | | 0030123158 |
| Eppendorf Safe-Lock Tubes BioBased | 2.0 mL | | PCR Clean | | | | 0030123190 |
| Eppendorf Flex-Tube® | 1.5 mL | ○ | Eppendorf Quality | 500 | | | 022364111 |
| Eppendorf Flex-Tube® | 1.5 mL | ● | Eppendorf Quality | 500 | | | 022363590 |
| Eppendorf Flex-Tube® | 1.5 mL | ● | Eppendorf Quality | 500 | | | 022363573 |
| Eppendorf Flex-Tube® | 1.5 mL | ● | Eppendorf Quality | 500 | | | 022363531 |
| Eppendorf Flex-Tube® | 1.5 mL | ● | Eppendorf Quality | 500 | | | 022363557 |
| Eppendorf Flex-Tube® | 1.5 mL | ● | Eppendorf Quality | 500 | | Amber (light protection) | 022363514 |
| Eppendorf Flex-Tube® | 1.5 mL | ○ | PCR Clean | 500 | | | 022364120 |

* ○ Colorless ● White

Ordering Information: Tubes

| Ordering information | | | | | | | |
|---|--------|--------|--|-----------|-----------|-----------------------------|-------------|
| Tube Type | Size | Color* | Eppendorf Quality | Pkg. Qty. | Cap Type | Features | Catalog No. |
| Protein LoBind® Tubes | 0.5 mL | ○ | PCR Clean | 100 | snap cap | | 022431064 |
| Protein LoBind® Tubes | 0.5 mL | ○ | PCR Clean | 500 | snap cap | | 0030108434 |
| Protein LoBind® Tubes | 1.5 mL | ○ | PCR Clean | 100 | snap cap | | 022431081 |
| Protein LoBind® Tubes | 1.5 mL | ○ | PCR Clean | 500 | snap cap | | 0030108442 |
| Protein LoBind® Tubes | 2.0 mL | ○ | PCR Clean | 100 | snap cap | | 022431102 |
| Protein LoBind® Tubes | 2.0 mL | ○ | PCR Clean | 500 | snap cap | | 0030108450 |
| Protein LoBind® Tubes | 5.0 mL | ○ | PCR Clean | 200 | screw cap | | 0030122356 |
| Protein LoBind® Tubes | 5.0 mL | ○ | PCR Clean | 100 | snap cap | | 0030108302 |
| DNA LoBind® Tubes | 0.5 mL | ○ | PCR Clean | 250 | snap cap | | 022431005 |
| DNA LoBind® Tubes | 0.5 mL | ○ | PCR Clean | 500 | snap cap | | 0030108400 |
| DNA LoBind® Tubes | 1.5 mL | ○ | PCR Clean | 250 | snap cap | | 022431021 |
| DNA LoBind® Tubes | 1.5 mL | ○ | PCR Clean | 500 | snap cap | | 0030108418 |
| DNA LoBind® Tubes | 2.0 mL | ○ | PCR Clean | 250 | snap cap | | 022431048 |
| DNA LoBind® Tubes | 2.0 mL | ○ | PCR Clean | 500 | snap cap | | 0030108426 |
| Eppendorf Safe-Lock Tubes - 2D SafeCode | 1.5 mL | ○ | PCR Clean | 500 | snap cap | | 0030113403 |
| Eppendorf Safe-Lock Tubes - 2D SafeCode | 2.0 mL | ○ | PCR Clean | 500 | snap cap | | 0030113446 |
| Eppendorf Tubes® - 2D SafeCode | 5.0 mL | ○ | PCR Clean | 200 | snap cap | | 0030113462 |
| Eppendorf Tubes® - 2D SafeCode | 5.0 mL | ○ | Sterile, pyrogen-, DNase-, RNase-, human and bacterial DNA-free | 200 | screw cap | | 0030113500 |
| Eppendorf Conical Tubes - 2D SafeCode | 15 mL | ○ | | 500 | screw cap | | 0030113489 |
| Eppendorf Conical Tubes - 2D SafeCode | 50 mL | ○ | | 500 | screw cap | | 0030113497 |
| Eppendorf Tubes® 5.0 mL | 5.0 mL | ○ | Eppendorf Quality | 200 | snap cap | | 0030119401 |
| Eppendorf Tubes® 5.0 mL | 5.0 mL | ○ | PCR Clean | 200 | snap cap | | 0030119460 |
| Eppendorf Tubes® 5.0 mL | 5.0 mL | ○ | Sterile | 200 | snap cap | | 0030119487 |
| Eppendorf Tubes® 5.0 mL | 5.0 mL | ○ | Biopur® | 50 | snap cap | | 0030119479 |
| Eppendorf Tubes® 5.0 mL | 5.0 mL | ○ | Forensic DNA Grade | 200 | snap cap | | 0030119606 |
| Eppendorf Tubes® 5.0 mL | 5.0 mL | ○ | PCR Clean | 100 | snap cap | Protein LoBind | 0030108302 |
| Eppendorf Tubes® 5.0 mL | 5.0 mL | ○ | PCR Clean | 200 | snap cap | DNA LoBind | 0030108310 |
| Eppendorf Tubes® 5.0 mL | 5.0 mL | ● | | 200 | snap cap | Amber (light protection) | 0030119452 |
| Eppendorf Tubes® 5.0 mL | 5.0 mL | ○ | Eppendorf Quality | 200 | screw cap | | 0030122305 |
| Eppendorf Tubes® 5.0 mL | 5.0 mL | ○ | PCR Clean | 200 | screw cap | | 0030122313 |
| Eppendorf Tubes® 5.0 mL | 5.0 mL | ○ | Sterile, pyrogen-, DNase-, RNase-, and DNA-free | 200 | screw cap | | 0030122321 |
| Eppendorf Tubes® 5.0 mL | 5.0 mL | ○ | Forensic DNA Grade | 200 | screw cap | | 0030122402 |
| Eppendorf Tubes® 5.0 mL | 5.0 mL | ○ | PCR Clean | 100 | screw cap | Protein LoBind | 0030122356 |
| Eppendorf Tubes® 5.0 mL | 5.0 mL | ○ | PCR Clean | 200 | screw cap | DNA LoBind | 0030122348 |
| Eppendorf Tubes® 5.0 mL | 5.0 mL | ● | Sterile, pyrogen-, DNase-, RNase-, and DNA-free | 200 | screw cap | Amber (light protection) | 0030122330 |
| Eppendorf Tubes® 5.0 mL | 5.0 mL | ○ | Eppendorf Quality | 200 | snap cap | | 0030119401 |
| Eppendorf Tubes® 5.0 mL | 5.0 mL | ○ | PCR Clean | 200 | snap cap | | 0030119460 |
| Eppendorf Tubes® 5.0 mL | 5.0 mL | ○ | Sterile | 200 | snap cap | | 0030119487 |
| Eppendorf Tubes® 5.0 mL | 5.0 mL | ○ | Biopur® | 50 | snap cap | | 0030119479 |
| Eppendorf Tubes® 5.0 mL | 5.0 mL | ○ | Forensic DNA Grade | 200 | snap cap | | 0030119606 |
| Eppendorf Tubes® 5.0 mL | 5.0 mL | ○ | PCR Clean | 100 | snap cap | Protein LoBind | 0030108302 |
| Eppendorf Tubes® 5.0 mL | 5.0 mL | ○ | PCR Clean | 200 | snap cap | DNA LoBind | 0030108310 |
| Eppendorf Tubes® 5.0 mL | 5.0 mL | ● | | 200 | snap cap | Amber (light protection) | 0030119452 |
| Eppendorf Tubes® 5.0 mL Starter Pack Includes 400 tubes (2 packages with 2 bags of 100 each), 2 racks (with 12 locations each), and 8 universal adapters for rotors with bore holes for 15 mL conical tubes | 5.0 mL | ○ | PCR clean | 400 | snap cap | | 0030119380 |

Ordering Information: Tubes

| Ordering information | | | | | | | |
|---|--------|--------|---|-----------|--------------|----------------|-------------|
| Tube Type | Size | Color* | Eppendorf Quality | Pkg. Qty. | Cap Type | Features | Catalog No. |
| Eppendorf Conical Tubes 15 mL | 15 mL | ○ | sterile, pyrogen-, DNase-, RNase-, human and bacterial DNA-free | 500 | screw cap | | 0030122151 |
| Eppendorf Conical Tubes 15 mL | 15 mL | ○ | | 500 | screw cap | | 0030122160 |
| Eppendorf Conical Tubes 15 mL | 15 mL | ○ | Forensic DNA Grade | 100 | screw cap | | 0030122259 |
| Eppendorf Conical Tubes 15 mL | 15 mL | ○ | PCR clean | 200 | screw cap | Protein LoBind | 0030122216 |
| Eppendorf Conical Tubes 15 mL | 15 mL | ○ | PCR clean | 200 | screw cap | DNA LoBind | 0030122208 |
| Eppendorf Conical Tubes 15 mL | 15 mL | ○ | Sterile, pyrogen-, DNase-, RNase-, human and bacterial DNA-free | 200 | screw cap | | 0030122194 |
| Eppendorf Conical Tubes - 25 mL | 25 mL | ○ | Eppendorf Quality | 200 | screw cap | | 0030122410 |
| Eppendorf Conical Tubes - 25 mL | 25 mL | ○ | PCR clean | 200 | screw cap | | 0030122429 |
| Eppendorf Conical Tubes - 25 mL | 25 mL | ○ | Sterile, pyrogen-, DNase-, RNase-, human and bacterial DNA-free | 200 | screw cap | | 0030122437 |
| Eppendorf Conical Tubes - 25 mL | 25 mL | ○ | DNA LoBind® PCR Clean | 200 | SnapTec® cap | | 0030108523 |
| Eppendorf Conical Tubes - 25 mL | 25 mL | ○ | DNA LoBind® PCR Clean | 200 | screw cap | | 0030122275 |
| Eppendorf Conical Tubes - 25 mL | 25 mL | ○ | Protein LoBind® PCR Clean | 200 | screw cap | | 0030122283 |
| Eppendorf Conical Tubes - 25 mL | 25 mL | ○ | Sterile, pyrogen-, DNase-, RNase-, human and bacterial DNA-free | 150 | SnapTec® cap | | 0030118421 |
| Eppendorf Conical Tubes - 25 mL | 25 mL | ○ | Eppendorf Quality | 200 | SnapTec® cap | | 0030118405 |
| Eppendorf Conical Tubes - 25 mL | 25 mL | ○ | PCR clean | 200 | SnapTec® cap | | 0030118413 |
| Eppendorf Conical Tubes - 25 mL | 25 mL | ○ | Sterile, pyrogen-, DNase-, RNase-, human and bacterial DNA-free | 150 | SnapTec® cap | | 0030118421 |
| Eppendorf Conical Tubes 25 mL SnapTec® cap Starter Pack Includes 200 tubes, 4 Single Tube Stands, and 6 adapters for rotors with bore for 50 mL conical tubes | 25 mL | ○ | PCR clean | 200 | SnapTec® cap | | 0030118502 |
| Eppendorf Conical Tubes - 50 mL | 50 mL | ○ | | 500 | screw cap | | 0030122178 |
| Eppendorf Conical Tubes - 50 mL | 50 mL | ○ | | 300 | screw cap | | 0030122186 |
| Eppendorf Conical Tubes - 50 mL | 50 mL | ○ | Forensic DNA Grade | 48 | screw cap | | 0030122267 |
| Eppendorf Conical Tubes - 50 mL | 50 mL | ○ | PCR clean | 200 | screw cap | Protein LoBind | 0030122240 |
| Eppendorf Conical Tubes - 50 mL | 50 mL | ○ | PCR clean | 200 | screw cap | DNA LoBind | 0030122232 |
| Eppendorf Conical Tubes - 50 mL | 50 mL | ● | Sterile, pyrogen-, DNase-, RNase-, human and bacterial DNA-free | 200 | screw cap | | 0030122224 |
| Eppendorf Conical Tubes - 50 mL | 50 mL | ○ | Eppendorf Quality | 240 | SnapTec® cap | | 0030118650 |
| Eppendorf Conical Tubes - 50 mL | 50 mL | ○ | PCR Clean | 240 | SnapTec® cap | | 0030118669 |
| Eppendorf Conical Tubes - 50 mL | 50 mL | ○ | | 200 | SnapTec® cap | | 0030118677 |
| Eppendorf Tubes® BioBased | 5.0 mL | ○ | Sterile, pyrogen-, DNase-, RNase-, human and bacterial DNA-free | 200 | screw cap | | 0030122518 |
| Eppendorf Tubes® BioBased | 15 mL | ○ | | 500 | screw cap | | 0030122526 |
| Eppendorf Tubes® BioBased | 25 mL | ○ | | 200 | screw cap | | 0030122534 |
| Eppendorf Tubes® BioBased | 50 mL | ○ | | 500 | screw cap | | 0030122542 |

* ○ Colorless ● White

Ordering Information: Tubes

| Ordering information | | | | | | | |
|--|--------|--------|--|-----------|--------------|--|--|
| Tube Type | Size | Color* | Eppendorf Quality | Pkg. Qty. | Cap Type | Features | Catalog No. |
| Eppendorf Tubes® - 2D SafeCode | 5.0 mL | ○ | sterile, pyrogen-, | 200 | screw cap | | 0030113500 |
| Eppendorf Conical Tubes - 2D SafeCode | 15 mL | ○ | DNase-, RNase-, | 500 | screw cap | | 0030113489 |
| Eppendorf Conical Tubes - 2D SafeCode | 50 mL | ○ | human and bacterial DNA-free | 500 | screw cap | | 0030113497 |
| Eppendorf CryoStorage Vials | 0.5 mL | ● | | 960 | pre-capped | | 0030079450 |
| Eppendorf CryoStorage Vials | 0.5 mL | ● | | 960 | pre-capped | | 0030079400 |
| Eppendorf CryoStorage Vials | 1.0 mL | ● | | 960 | pre-capped | 2D SafeCode | 0030079418 |
| Eppendorf CryoStorage Vials | 1.0 mL | ● | Sterile, free of DNase, RNase, human DNA, endotoxin | 960 | pre-capped | (DataMatrix/ ECC200), | 0030079469 |
| Eppendorf CryoStorage Vials | 1.5 mL | ● | | 480 | pre-capped | linear and | 0030079477 |
| Eppendorf CryoStorage Vials | 1.5 mL | ● | | 480 | pre-capped | human- | 0030079426 |
| Eppendorf CryoStorage Vials | 2.0 mL | ● | | 480 | pre-capped | readable code | 0030079434 |
| Eppendorf CryoStorage Vials | 2.0 mL | ● | | 480 | pre-capped | | 0030079485 |
| Eppendorf CryoStorage Vials | 4.0 mL | ● | | 480 | pre-capped | | 0030079442 |
| Eppendorf CryoStorage Vials | 4.0 mL | ● | | 480 | pre-capped | | 0030079493 |
| Eppendorf PCR Tubes | 0.1 mL | ○ | | PCR Clean | 120 | | Cap Strips, flat, 10-tube strips |
| Eppendorf PCR Tubes | 0.1 mL | ○ | PCR Clean | 120 | without lids | Cap Strips, flat, 10-tube strips | 0030124804 |
| Eppendorf PCR Tubes | 0.1 mL | ○ | PCR Clean | 120 | | Cap Strips, domed, 10- tube strips | 0030124812 |
| Eppendorf PCR Tubes | 0.2 mL | ○ | PCR Clean | 960 | | 8-tube strips | 951010022 |
| Eppendorf PCR Tubes | 0.2 mL | ○ | Forensic DNA Grade | 500 | | | 0030124707 |
| Eppendorf PCR Tubes | 0.2 mL | ○ | PCR Clean | 1,000 | | | 951010006 |
| Eppendorf PCR Tubes | 0.5 mL | ○ | PCR Clean | 500 | | | 0030124537 |

* ○ Colorless ● White

Ordering Information: Plates

| Ordering information | | | | | | | | |
|--|--------|--------------------|---------|-----------|-----------|--------------|-----------|-------------|
| Plate Type | Frame* | Eppendorf Quality | # Wells | Pkg. Qty. | Size (μL) | Features | Divisible | Catalog No. |
| Eppendorf twin.tec® PCR Plate 96 | ● | PCR Clean | 96 | 25 | 150 μL | skirted | | 951020427 |
| Eppendorf twin.tec® PCR Plate 96 | ○ | PCR Clean | 96 | 25 | 250 | semi-skirted | | 951020303 |
| Eppendorf twin.tec® PCR Plate 96 | ● | PCR Clean | 96 | 20 | 250 | unskirted | ✓ | 0030133404 |
| Eppendorf twin.tec® PCR Plate 96 | ○ | PCR Clean | 96 | 300 | 150 | skirted | | 951020619 |
| Eppendorf twin.tec® PCR Plate 96 | ● | PCR Clean | 96 | 300 | 150 | skirted | | 951020624 |
| Eppendorf twin.tec® PCR Plate 96 | ● | PCR Clean | 96 | 300 | 150 | skirted | | 951020648 |
| Eppendorf twin.tec® PCR Plate 96 | ● | PCR Clean | 96 | 300 | 150 | skirted | | 951020653 |
| Eppendorf twin.tec® PCR Plate 96 | ● | PCR Clean | 96 | 300 | 150 | skirted | | 951020632 |
| Eppendorf twin.tec® PCR Plate 96 | ○ | PCR Clean | 96 | 300 | 250 | semi-skirted | | 951020600 |
| Eppendorf twin.tec® PCR Plate 96 | ○ | PCR Clean | 96 | 20 | 250 | unskirted | | 0030133366 |
| Eppendorf twin.tec® PCR Plate 96 | ● | PCR Clean | 96 | 20 | 250 | unskirted | | 0030133390 |
| Eppendorf twin.tec® PCR Plate 96 | ● | PCR Clean | 96 | 25 | 250 | semi-skirted | | 951020320 |
| Eppendorf twin.tec® PCR Plate 96 | ● | PCR Clean | 96 | 25 | 250 | semi-skirted | | 951020346 |
| Eppendorf twin.tec® PCR Plate 96 | ● | PCR Clean | 96 | 25 | 250 | semi-skirted | | 951020362 |
| Eppendorf twin.tec® PCR Plate 96 | ● | PCR Clean | 96 | 25 | 250 | semi-skirted | | 951020389 |
| Eppendorf twin.tec® PCR Plate 96 | ○ | PCR Clean | 96 | 25 | 150 | skirted | | 951020401 |
| Eppendorf twin.tec® PCR Plate 96 | ● | PCR Clean | 96 | 25 | 150 | skirted | | 951020443 |
| Eppendorf twin.tec® PCR Plate 96 | ● | PCR Clean | 96 | 25 | 150 | skirted | | 951020460 |
| Eppendorf twin.tec® PCR Plate 96 | ● | PCR Clean | 96 | 25 | 150 | skirted | | 951020486 |
| Eppendorf twin.tec® PCR Plate 96 | ○ | Forensic DNA Grade | 96 | 10 | 250 | semi-skirted | | 0030129610 |
| Eppendorf twin.tec® PCR Plate 96 | ○ | Forensic DNA Grade | 96 | 10 | 150 | skirted | | 0030129601 |
| Eppendorf twin.tec® PCR Plate 384 | ● | PCR Clean | 384 | 25 | 45 μL | skirted | | 951020711 |
| Eppendorf twin.tec® PCR Plate 384 | ● | PCR Clean | 384 | 25 | 45 | skirted | | 951020745 |
| Eppendorf twin.tec® PCR Plate 384 | ○ | PCR Clean | 384 | 300 | 45 | skirted | | 951020539 |
| Eppendorf twin.tec® PCR Plate 384 | ● | PCR Clean | 384 | 300 | 45 | skirted | | 951020594 |
| Eppendorf twin.tec® PCR Plate 384 | ● | PCR Clean | 384 | 300 | 45 | skirted | | 951020552 |
| Eppendorf twin.tec® PCR Plate 384 | ● | PCR Clean | 384 | 300 | 45 | skirted | | 951020541 |
| Eppendorf twin.tec® PCR Plate 384 | ● | PCR Clean | 384 | 300 | 45 | skirted | | 951020573 |
| Eppendorf twin.tec® PCR Plate 384 | ● | PCR Clean | 384 | 25 | 45 | skirted | | 951020729 |
| Eppendorf twin.tec® PCR Plate 384 | ● | PCR Clean | 384 | 25 | 45 | skirted | | 951020737 |
| Eppendorf twin.tec® PCR Plate 384 | ○ | Forensic DNA Grade | 384 | 10 | 45 | skirted | | 0030129628 |
| Eppendorf twin.tec® PCR Plate 96 LoBind® | ○ | PCR Clean | 96 | 25 | 250 μL | semi-skirted | | 0030129504 |
| Eppendorf twin.tec® PCR Plate 96 LoBind® | ● | PCR Clean | 96 | 25 | 150 | skirted | | 0030129660 |
| Eppendorf twin.tec® PCR Plate 96 LoBind® | ○ | PCR Clean | 96 | 25 | 150 | skirted | | 0030129512 |
| Eppendorf twin.tec® PCR Plate 96 LoBind® | ● | PCR Clean | 96 | 300 | | skirted | | 0030129555 |
| Eppendorf twin.tec® PCR Plate 96 LoBind® | ● | PCR Clean | 96 | 300 | | skirted | | 0030129563 |
| Eppendorf twin.tec® PCR Plate 96 LoBind® | ● | PCR Clean | 96 | 300 | | skirted | | 0030129571 |
| Eppendorf twin.tec® PCR Plate 96 LoBind® | ● | PCR Clean | 96 | 25 | 150 | skirted | | 0030129580 |
| Eppendorf twin.tec® PCR Plate 96 LoBind® | ● | PCR Clean | 96 | 25 | 150 | skirted | | 0030129598 |
| Eppendorf twin.tec® PCR Plate 96 LoBind® | ● | PCR Clean | 96 | 25 | 150 | skirted | | 0030129679 |
| Eppendorf twin.tec® PCR Plate 384 LoBind® | ○ | PCR Clean | 384 | 25 | 45 μL | skirted | | 0030129547 |

* ○ Colorless ● White

Ordering Information: Plates

| Ordering information | | | | | | | | |
|---|--------|--------------------|---------|-----------|-----------|-------------------------|-----------|-------------|
| Plate Type | Frame* | Eppendorf Quality | # Wells | Pkg. Qty. | Size (μL) | Features | Divisible | Catalog No. |
| Eppendorf twin.tec® microbiology PCR Plate 96 | ● | PCR Clean | 96 | 10 | 150 μL | skirted | | 0030129318 |
| Eppendorf twin.tec® microbiology PCR Plate 96 | ○ | PCR Clean | 96 | 10 | 150 | skirted | | 0030129300 |
| Eppendorf twin.tec® microbiology PCR Plate 96 | ○ | PCR Clean | 96 | 10 | 250 | semi-skirted | | 0030129326 |
| Eppendorf twin.tec® microbiology PCR Plate 96 | ● | PCR Clean | 96 | 10 | 250 | semi-skirted | | 0030129334 |
| Eppendorf twin.tec® microbiology PCR Plate 384 | ○ | PCR | 384 | 10 | 45 μL | skirted | | 0030129342 |
| Eppendorf twin.tec® microbiology PCR Plate 384 | ● | PCR | 384 | 10 | 45 | skirted | | 0030129350 |
| Eppendorf twin.tec® microbiology PCR Plate 384 | ○ | PCR | 384 | 25 | 46 | skirted | | 951020702 |
| Eppendorf twin.tec® PCR Plate 96, low profile | ○ | PCR Clean | 96 | 20 | 150 μL | unskirted | | 0030133307 |
| Eppendorf twin.tec® PCR Plate 96, low profile | ● | PCR Clean | 96 | 20 | 150 | unskirted | | 0030133331 |
| Eppendorf twin.tec® PCR Plate 96, divisible | ○ | PCR Clean | 96 | 20 | 150 μL | unskirted | ✓ | 0030133358 |
| Eppendorf twin.tec® PCR Plate 96, divisible | ○ | PCR Clean | 96 | 20 | 250 | unskirted | ✓ | 0030133374 |
| Eppendorf twin.tec® PCR Plate 96, divisible | ● | PCR Clean | 96 | 20 | 150 | unskirted | ✓ | 0030133382 |
| Eppendorf twin.tec® Trace PCR Plate 96 | ○ | PCR Clean | 96 | 25 | 150 μL | skirted | | 0030129768 |
| Eppendorf twin.tec® Trace PCR Plate 96 | ● | PCR Clean | 96 | 25 | 150 | skirted | | 0030129776 |
| Eppendorf twin.tec® Trace PCR Plate 96 | ● | PCR Clean | 96 | 25 | 150 | skirted | | 0030129784 |
| Eppendorf twin.tec® Trace PCR Plate 96 LoBind® | ○ | PCR Clean | 96 | 25 | 150 μL | skirted | | 0030129822 |
| Eppendorf twin.tec® Trace PCR Plate 96 BioBased | ○ | PCR Clean | 96 | 25 | 150 μL | skirted | | 0030129849 |
| Eppendorf twin.tec® Trace PCR Plate 96 BioBased | ● | PCR Clean | 96 | 25 | 150 | skirted | | 0030129857 |
| Eppendorf twin.tec® Trace PCR Plate 96 BioBased | ○ | PCR Clean | 96 | 25 | 250 | semi-skirted | | 0030531043 |
| Eppendorf twin.tec® Trace PCR Plate 96 BioBased LoBind® | ○ | PCR Clean | 96 | 25 | 150 μL | skirted | | 0030531086 |
| Eppendorf twin.tec® Trace PCR Plate 96 BioBased LoBind® | ○ | PCR Clean | 96 | 25 | 250 | semi-skirted | | 0030531060 |
| Eppendorf twin.tec® Trace PCR Plate 384 BioBased | ○ | PCR Clean | 384 | 25 | 45 μL | skirted | | 0030531051 |
| Eppendorf twin.tec® Trace PCR Plate 384 BioBased LoBind® | ○ | PCR Clean | 384 | 25 | 45 μL | skirted | | 0030531078 |
| Eppendorf twin.tec® 96 real-time PCR Plate | Ⓢ | PCR Clean | 96 | 25 | 150 μL | skirted | | 951022015 |
| Eppendorf twin.tec® 96 real-time PCR Plate | Ⓢ | Forensic DNA Grade | 96 | 10 | 150 | skirted | | 0030129636 |
| Eppendorf twin.tec® 96 real-time PCR Plate | ● | PCR Clean | 96 | 25 | 250 | semi-skirted | | 951022043 |
| Eppendorf twin.tec® 96 real-time PCR Plate | Ⓢ | PCR Clean | 96 | 25 | 250 | semi-skirted | | 951022055 |
| Eppendorf twin.tec® 96 real-time PCR Plate | ● | PCR Clean | 96 | 25 | 150 | skirted | | 951022003 |
| Eppendorf twin.tec® 96 real-time PCR Plate | Ⓢ | Forensic DNA Grade | 96 | 10 | 250 | semi-skirted | | 0030129644 |
| Eppendorf twin.tec® 96 real-time PCR Plate | ● | PCR Clean | 96 | 20 | 150 | unskirted, low profile | | 0030132718 |
| Eppendorf twin.tec® 96 real-time PCR Plate | Ⓢ | PCR Clean | 96 | 20 | 150 | unskirted, low profile | | 0030132700 |
| Microplate 96/F | Ⓢ | sterile | 96 | 80 | 350 μL | RecoverMax® well design | | 951040021 |
| Microplate 96/F | Ⓢ | PCR Clean | 96 | 80 | 350 | | | 951040005 |
| Microplate 96/U | Ⓢ | sterile | 96 | 80 | 320 μL | | | 951040081 |
| Microplate 96/U | Ⓢ | PCR Clean | 96 | 80 | 320 | | | 951040048 |
| Microplate 96/V | Ⓢ | sterile | 96 | 80 | 300 μL | | | 951040227 |
| Microplate 96/V | Ⓢ | sterile | 96 | 240 | 300 | | | 951040243 |
| Microplate 96/V | Ⓢ | PCR Clean | 96 | 80 | 300 | | | 951040188 |
| Microplate 384/V | Ⓢ | sterile | 384 | 80 | 120 μL | | | 951040464 |
| Microplate 384/V | Ⓢ | PCR Clean | 384 | 80 | 120 | | | 951040421 |
| Microplate 384/F | Ⓢ | PCR Clean | 384 | 80 | 120 μL | | | 951040341 |
| Microplate 384/F | Ⓢ | sterile | 384 | 80 | 120 | | | 951040383 |

* ○ Colorless Ⓢ White

Ordering Information: Plates

Ordering information

| Plate Type | Frame* | Eppendorf Quality | # Wells | Pkg. Qty. | Size (µL) | Wells | Divisible | Catalog No. |
|--|--------|-------------------|---------|-----------|-----------|-------|-----------|-------------|
| Microplate 96/V-PP - DNA LoBind® | Ⓜ | PCR Clean | 96 | 80 | 350 µL | ○ | | 0030603303 |
| Microplate 384/V-PP - DNA LoBind® | Ⓜ | PCR Clean | 384 | 80 | 140 µL | ○ | | 951040546 |
| Microplate 384/V-PP - Protein LoBind® | Ⓜ | PCR Clean | 384 | 80 | 140 µL | ○ | | 951040589 |
| Microplate 384/V-PP - Protein LoBind® | Ⓜ | PCR Clean | 384 | 240 | 140 | ○ | | 951040601 |
| Microplate 96/F | ● | PCR Clean | 96 | 80 | 350 µL | Ⓜ | | 951040137 |
| Microplate 96/F | Ⓜ | PCR Clean | 96 | 80 | 350 | ● | | 951040196 |
| Microplate 96/U | Ⓜ | PCR Clean | 96 | 80 | 320 µL | ● | | 951040102 |
| Microplate 96/U | ● | PCR Clean | 96 | 80 | 320 | Ⓜ | | 951040145 |
| Microplate 96/V | Ⓜ | PCR Clean | 96 | 80 | 300 µL | ● | | 951040260 |
| Microplate 96/V | ● | PCR Clean | 96 | 80 | 300 | Ⓜ | | 951040308 |
| Microplate 384/V | Ⓜ | PCR Clean | 384 | 80 | 120 µL | ● | | 951040481 |
| Microplate 384/V | ● | PCR Clean | 384 | 80 | 120 | Ⓜ | | 951040503 |
| Deepwell Plate 96 | Ⓜ | PCR Clean | 96 | 40 | 500 µL | ○ | | 951031801 |
| Deepwell Plate 96 | ● | PCR Clean | 96 | 40 | 500 | ○ | | 951031887 |
| Deepwell Plate 96 | Ⓜ | PCR Clean | 96 | 20 | 1000 | ○ | | 951032603 |
| Deepwell Plate 96 | ● | PCR Clean | 96 | 20 | 1000 | ○ | | 951032689 |
| Deepwell Plate 96 | ● | PCR Clean | 96 | 40 | 500 | ○ | | 951031861 |
| Deepwell Plate 96 | Ⓜ | PCR Clean | 96 | 120 | 500 | ○ | | 951032204 |
| Deepwell Plate 96 | ● | PCR Clean | 96 | 20 | 1000 | ○ | | 951032620 |
| Deepwell Plate 96 | Ⓜ | PCR Clean | 96 | 20 | 2000 | ○ | | 951033405 |
| Deepwell Plate 96 | ● | PCR Clean | 96 | 20 | 2000 | ○ | | 951033464 |
| Deepwell Plate 96 | ● | PCR Clean | 96 | 40 | 500 | ○ | | 951031828 |
| Deepwell Plate 96 | ● | PCR Clean | 96 | 20 | 1000 | ○ | | 951032662 |
| Deepwell Plate 96 | Ⓜ | PCR Clean | 96 | 80 | 1000 | ○ | | 951033006 |
| Deepwell Plate 96 | ● | PCR Clean | 96 | 20 | 2000 | ○ | | 951033421 |
| Deepwell Plate 96 | ● | PCR Clean | 96 | 20 | 2000 | ○ | | 951033481 |
| Deepwell Plate 96 | Ⓜ | PCR Clean | 96 | 80 | 2000 | ○ | | 951033600 |
| Deepwell Plate 96 | Ⓜ | sterile | 96 | 20 | 2000 | ○ | | 951033502 |
| Deepwell Plate 96 | ● | sterile | 96 | 20 | 1000 | ○ | | 951032727 |
| Deepwell Plate 96 | Ⓜ | sterile | 96 | 80 | 1000 | ○ | | 951033103 |
| Deepwell Plate 96 | ● | sterile | 96 | 20 | 2000 | ○ | | 951033588 |
| Deepwell Plate 96 | Ⓜ | sterile | 96 | 40 | 500 | ○ | | 951031909 |
| Deepwell Plate 96 | ● | sterile | 96 | 40 | 500 | ○ | | 951031925 |
| Deepwell Plate 96 | ● | sterile | 96 | 40 | 500 | ○ | | 951031968 |
| Deepwell Plate 96 | ● | sterile | 96 | 40 | 500 | ○ | | 951031984 |
| Deepwell Plate 96 | Ⓜ | sterile | 96 | 120 | 500 | ○ | | 951032301 |
| Deepwell Plate 96 | Ⓜ | sterile | 96 | 20 | 1000 | ○ | | 951032701 |
| Deepwell Plate 96 | ● | sterile | 96 | 20 | 1000 | ○ | | 951032760 |
| Deepwell Plate 96 | ● | sterile | 96 | 20 | 1000 | ○ | | 951032786 |
| Deepwell Plate 96 | ● | sterile | 96 | 20 | 2000 | ○ | | 951033529 |
| Deepwell Plate 96 | ● | sterile | 96 | 20 | 2000 | ○ | | 951033561 |
| Deepwell Plate 96 | Ⓜ | sterile | 96 | 80 | 2000 | ○ | | 951033707 |

* ○ Colorless Ⓜ White

Ordering Information: Plates

| Ordering information | | | | | | | | | |
|--|--------|------------------------------|--------------------------|-----------|-----------|----------------------------|-----------|-------------|-----------|
| Plate Type | Color* | Eppendorf Quality | # Wells | Pkg. Qty. | Size (µL) | Features | Divisible | Catalog No. | |
| Deepwell Plate 96/500 µL | Ⓜ | Protein LoBind® PCR Clean | 96 | 40 | 500 µL | | | 951032107 | |
| Deepwell Plate 96/500 µL | ● | | 96 | 40 | 500 | | | 951032123 | |
| Deepwell Plate 96/500 µL | Ⓜ | | 96 | 120 | 500 | | | 951032506 | |
| Deepwell Plate 96/1000 µL | Ⓜ | | 96 | 20 | 1000 µL | | | 951032905 | |
| Deepwell Plate 96/1000 µL | ● | | 96 | 20 | 1000 | | | 951032921 | |
| Deepwell Plate 96/1000 µL | Ⓜ | | 96 | 80 | 1000 | | | 951033308 | |
| Deepwell Plate 96/2000 µL | Ⓜ | | 96 | 20 | 2000 | | | 0030504305 | |
| Deepwell Plate 384/200 µL | Ⓜ | | 384 | 40 | 200 µL | | | 951031305 | |
| Deepwell Plate 384/200 µL | Ⓜ | | 384 | 120 | 200 | | | 951031704 | |
| Deepwell Plate 96/500 µL | Ⓜ | | DNA LoBind® PCR Clean | 96 | 40 | 500 µL | | | 951032000 |
| Deepwell Plate 96/500 µL | ● | 96 | | 40 | 500 | | | 951032085 | |
| Deepwell Plate 96/500 µL | Ⓜ | 96 | | 120 | 500 | | | 951032409 | |
| Deepwell Plate 96/1000 µL | Ⓜ | 96 | | 20 | 1000 µL | | | 951032808 | |
| Deepwell Plate 96/1000 µL | Ⓜ | 96 | | 80 | 1000 | | | 951033201 | |
| Deepwell Plate 96/1000 µL | ● | 96 | | 20 | 1000 | | | 951032883 | |
| Deepwell Plate 384/200 µL | Ⓜ | 384 | | 40 | 200 µL | | | 951031208 | |
| Deepwell Plate 384/200 µL | Ⓜ | 384 | | 120 | 200 | | | 951031607 | |
| Deepwell Plate 384 | Ⓜ | PCR Clean | | 384 | 40 | 200 µL | | | 951031003 |
| Deepwell Plate 384 | Ⓜ | PCR Clean | | 384 | 120 | 200 | | | 951031402 |
| Deepwell Plate 384 | Ⓜ | sterile | 384 | 120 | 200 | | | 951031500 | |
| Deepwell Plate 384 | Ⓜ | sterile | 384 | 40 | 200 | | | 951031101 | |
| Deepwell Plate 96/500 µL, SafeCode™ (barcoded) | Ⓜ | PCR Clean | 96 | 40 | 500 µL | | | 0030113543 | |
| Deepwell Plate 96/1000 µL, SafeCode™ (barcoded) | Ⓜ | PCR Clean | 96 | 20 | 1000 | | | 0030113535 | |
| Deepwell Plate 96/2000 µL, SafeCode™ (barcoded) | Ⓜ | PCR Clean | 96 | 20 | 2000 | | | 0030113527 | |
| Deepwell Plate 384/200 µL, SafeCode™ (barcoded) | Ⓜ | PCR Clean | 384 | 40 | 200 µL | | | 0030113551 | |
| Eppendorf twin.tec® PCR Plate 96/150 µL, SafeCode™ (barcoded) | ○ | PCR Clean | 96 | 25 | 150 µL | | | 0030113560 | |
| Eppendorf twin.tec® PCR Plate 96/150 µL, SafeCode™ (barcoded) | ● | PCR Clean | 96 | 25 | 150 | | | 0030113624 | |
| Eppendorf twin.tec® PCR Plate 96/150 µL, SafeCode™ (barcoded) | ● | PCR Clean | 96 | 25 | 150 | | | 0030113616 | |
| Eppendorf twin.tec® PCR Plate 96/150 µL, SafeCode™ (barcoded) | ● | PCR Clean | 96 | 25 | 150 | | | 0030113632 | |
| Eppendorf twin.tec® PCR Plate 384/45 µL, SafeCode™ (barcoded) | ○ | PCR Clean | 384 | 25 | 45 µL | | | 0030113578 | |
| Microplate 96/V, SafeCode™ (barcoded) | Ⓜ | PCR Clean | 96 | 80 | 350 µL | RecoverMax® well design | | 0030113586 | |

* ○ Colorless Ⓜ White

Eppendorf North America, Inc.
Phone: 800-645-3050

Eppendorf Canada Ltd.
Phone: 800-263-8715

www.eppendorf.com