

eppendorf



It's Your Choice

Refill epT.I.P.S.[®] Boxes 2.0 with Reloads

Three box sizes

Each of the three epT.I.P.S.® Box 2.0 sizes can be autoclaved up to 100 times – either filled with tips or empty. The boxes are designed for epT.I.P.S. pipette tips in volumes from 10 μ L up to 5 mL.



Design

Fully enclosed
containment on
the back* – prevents
hidden contamination

*applies for box size 1 and 2

The classic
epT.I.P.S. design
has been updated
without eliminating
traditional features





Box 2.0

eppendorf

PhysioCare
concept



The transparent lid is modified with recesses for optimized, non-slip stackability, in combination with silicone feet embedded in the box bottom



»Light touch button« – only minimal pressure is needed to open the lid



The new boxes are available as single boxes and in sets with 1 box and 5 reloads.

They can be used with

- > epT.I.P.S.® Reloads Eppendorf Quality™ and PCR clean
- > epT.I.P.S.® Reloads Biopur® – available in 2022
- > ep Dualfilter T.I.P.S.® Reloads PCR clean/Sterile – available in 2022
- > ep Dualfilter T.I.P.S.® SealMax Reloads Biopur® – available in 2022



All about epT.I.P.S. packaging options:
Click or scan to follow
www.eppendorf.com/epTIPS-News

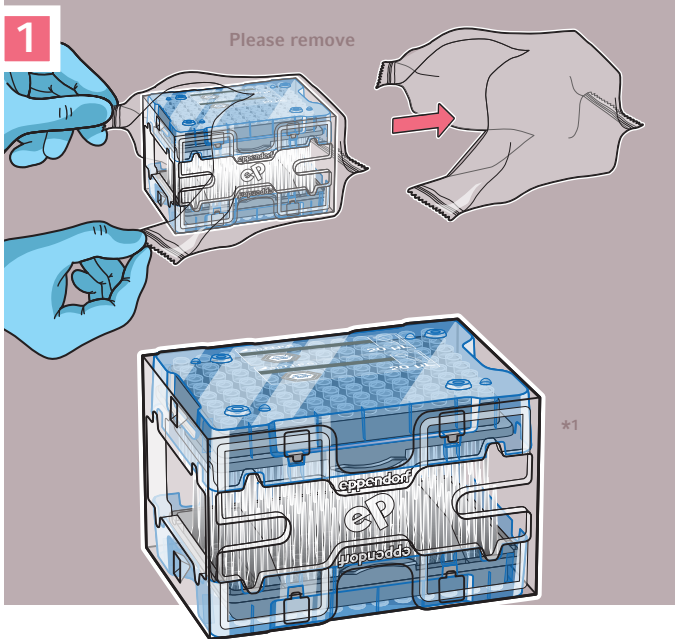


NEW

Refilling new epT.I.P.S.[®] Boxes 2.0 with Reloads

The new epT.I.P.S.[®] Box 2.0 is the next evolution of the original epT.I.P.S. Box – designed in 2002 – unrivalled in function and quality for 19 years. All epT.I.P.S. Reload variants, as well as epT.I.P.S. Standard tips manually stacked, fit into the new epT.I.P.S. Boxes 2.0 available in three sizes.

There are two versions of non-sterile Reloads available: either Dual-Sided, 2 trays interlocked with each other, or 5 trays stacked. [Learn here](#) how to transfer the filled trays safely into the box.

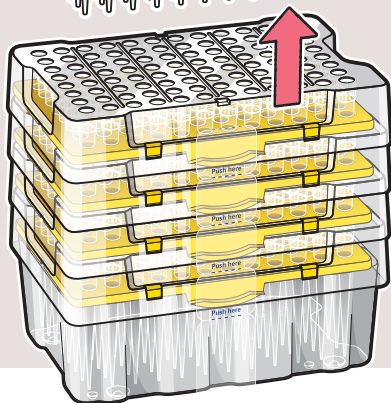
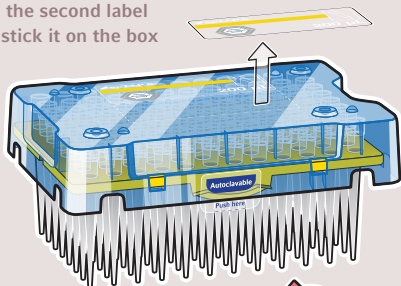


Step 1: First remove the protective foil from the reload.

*1 Dual-Sided Reload variant with 2 trays

Peel the second label
and stick it on the box

2

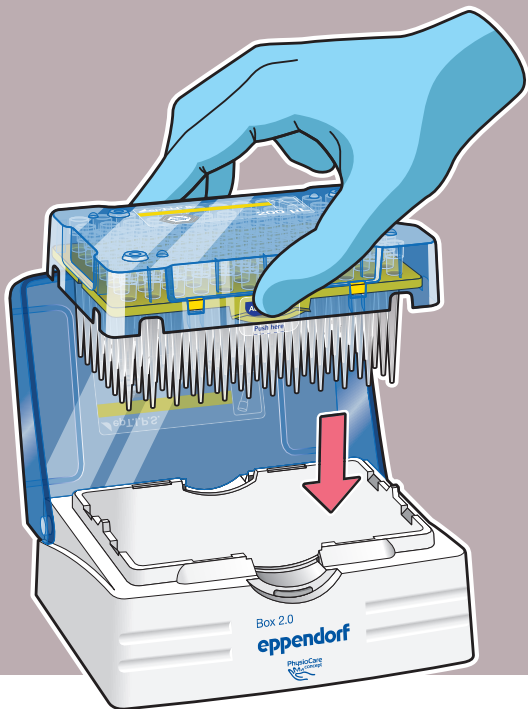


*2

Step 2: Grasp the top tray with lid in the middle of the long sides and lift.

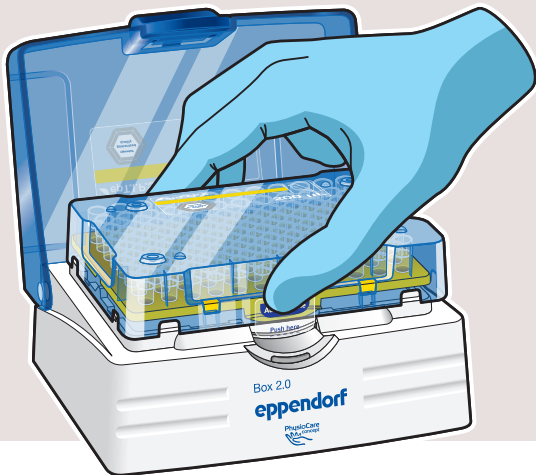
*2 Stacked Reload variant with 5 trays

3



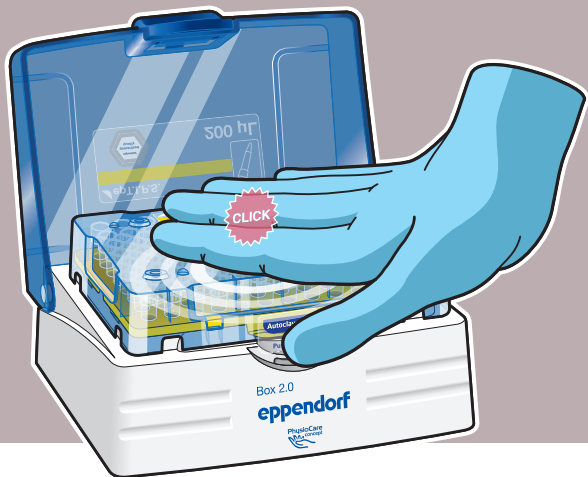
Step 3: Lift the tray with the lid over the open box and lower the tray as vertically as possible into the box.

4



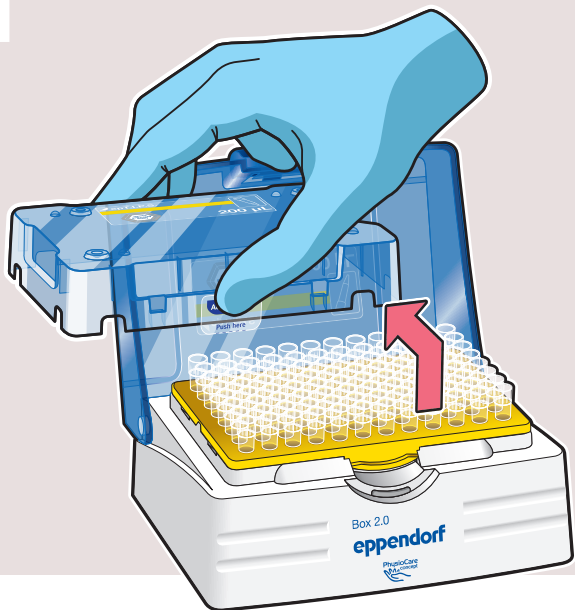
Step 4: When inserting the reload into the box, press lightly with your middle finger and thumb on the two bulges on the tray side.

5



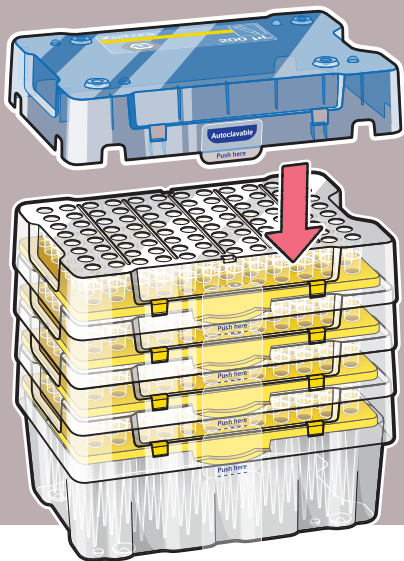
Step 5: Then place your hand flat on the reload lid and press down the lid with tray until you hear the click sound.

6



Step 6: When the tray is correctly inserted in the box, remove reload lid and close lid of the box securely.

7



Step 7: Place reload lid on remaining reload stack for protection.

Your local distributor: www.eppendorf.com/contact

Eppendorf AG · Barkhausenweg 1 · 22339 Hamburg · Germany
eppendorf@eppendorf.com · www.eppendorf.com

www.eppendorf.com/epTIPS