



# Touch the Future

VisioNize® – A New User Experience

# Touch the Future

VisioNize® – a new user interface concept and experience.

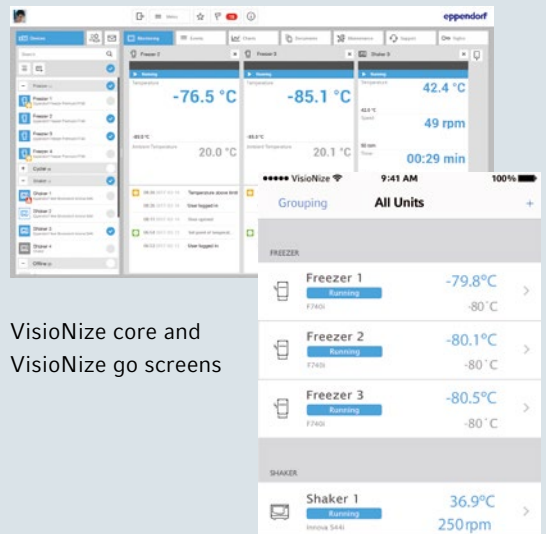
The VisioNize system allows you to easily link your lab equipment to a central monitoring and data management software. It's a smart network that lets you manage your lab equipment efficiently whenever you want and wherever you are.

The intuitive VisioNize user interface concept is implemented across the touch interfaces of VisioNize-onboard devices, in the main software and central data server VisioNize core, and in the iOS® app VisioNize go. Accompanying you when you leave the lab, VisioNize go enables you to check devices immediately – anywhere, anytime.



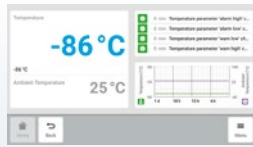
## System Features of the New VisioNize User Interface Concept:

- ✓ Consistent user interface concept and experience
- ✓ Unified operation concept across products and platforms
- ✓ Easy parameter, program and device management
- ✓ E-mail notifications for specified events
- ✓ Device access authorization by user login

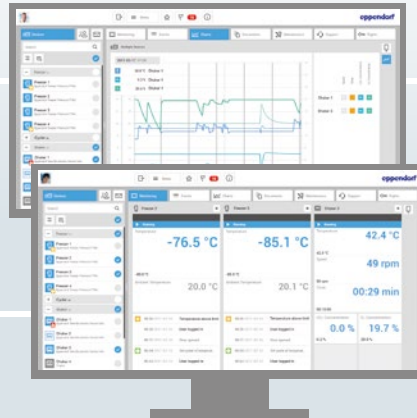


VisioNize core and VisioNize go screens

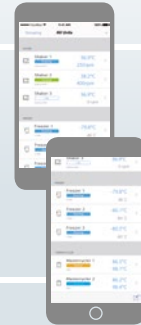
Consistent operation across product lines



VisioNize-onboard devices



VisioNize core



VisioNize go

Touch display

PC software

Mobile

Consistent operation across platforms

## The VisioNize® System – Free up Precious Time

The combination of the different components of the new VisioNize user interface lets you be prepared for the future. Manage your lab equipment effectively whenever you want and wherever you are. Get ready for tomorrow.

- ✓ Monitoring of devices
- ✓ Tracking trends
- ✓ Chart analysis
- ✓ Document database

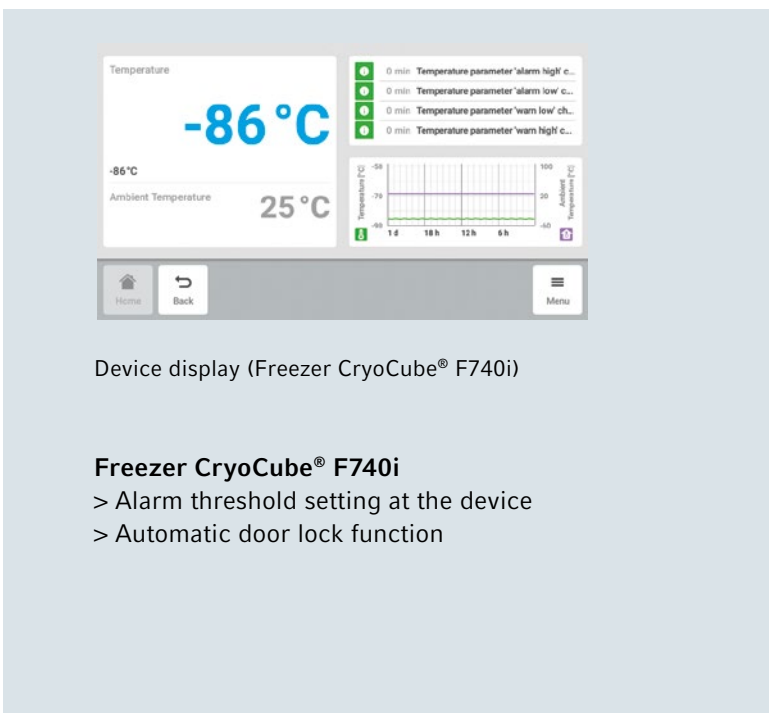
More time for what really matters to you



> Detailed information about the whole VisioNize System:  
[www.eppendorf.com/visionize](http://www.eppendorf.com/visionize)



## Additional Device-Specific Features:

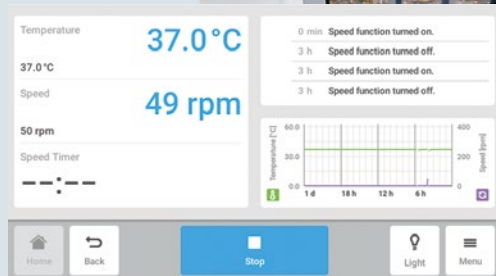


Device display (Freezer CryoCube® F740i)

### Freezer CryoCube® F740i

- > Alarm threshold setting at the device
- > Automatic door lock function





Device display (Shaker Innova® S44i)

### Shaker Innova® S44i

- > Temperature threshold setting at the device
- > Sequence programming and runtime definition
- > Balance master



Device display (Mastercycler® X50)

### Mastercycler® X50

- > Monitor remaining runtime at the device and via VisioNize core and go
- > Program and device management

**Your local distributor: [www.eppendorf.com/contact](http://www.eppendorf.com/contact)**  
Eppendorf AG · 22331 Hamburg · Germany  
[eppendorf@eppendorf.com](mailto:eppendorf@eppendorf.com) · [www.eppendorf.com](http://www.eppendorf.com)

[www.eppendorf.com](http://www.eppendorf.com)